

WAAS CH 50230 W26A	APP CRS 259°	Rwy Idg TDZE 4124 Apt Elev 4170
----------------------------------------	------------------------	-----------------------------------------------------

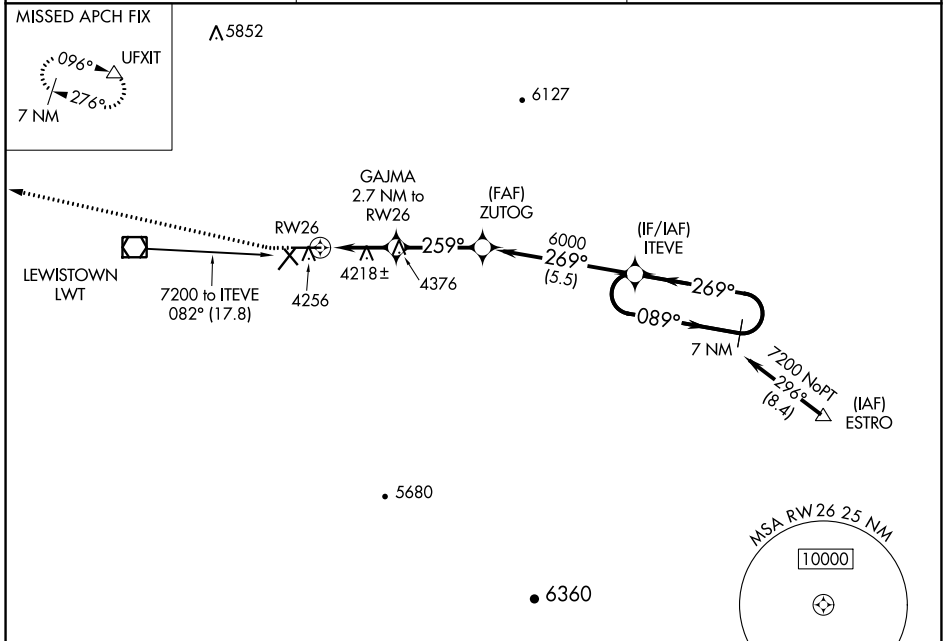
RNAV (GPS) RWY 26

LEWISTOWN MUNI (LWT)

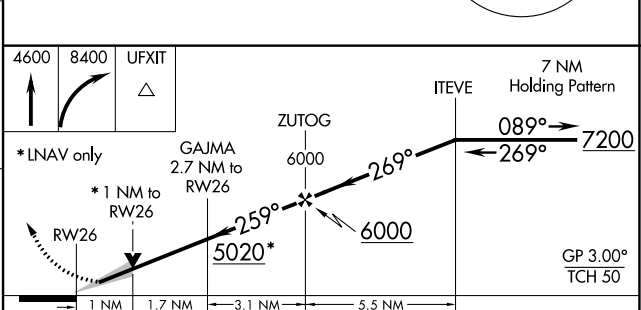
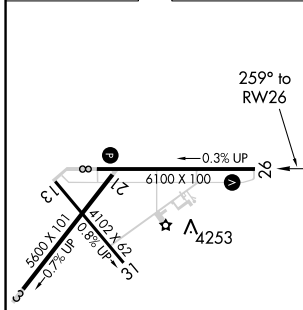
▽ For uncompensated Baro-VNAV systems, LNAV/VNAV NA below -26°C (-14°F) or above 50°C (123°F).
▲ DME/DME RNP-0.3 NA.

MISSED APPROACH: Climb to 4600 then climbing right turn to 8400 direct UFXIT and hold, continue climb-in-hold to 8400.

ASOS 118.375	SALT LAKE CENTER 133.4 285.4	UNICOM 123.0 (CTAF) 0
------------------------	----------------------------------------	---------------------------------



ELEV 4170	D	TDZE 4124
-----------	----------	-----------



CATEGORY	A	B	C	D
LPV DA		4324- ³ / ₄	200 (200- ³ / ₄)	
LNAV/VNAV DA		4389- ⁷ / ₈	265 (300- ⁷ / ₈)	
LNAV MDA		4480-1	356 (400-1)	
C CIRCLING	4680-1 510 (600-1)	4820-1 650 (700-1)	4980-2 ¹ / ₄ 810 (900-2 ¹ / ₄)	5240-3 1070 (1100-3)

REIL Rwy 8 and 26 **0**
 MIRL 8-26 and 13-31 **0**

NW-1, 03 OCT 2024 to 31 OCT 2024

NW-1, 03 OCT 2024 to 31 OCT 2024