


VORTAC LNK <b>116.1</b> Chan <b>108</b>	APP CRS <b>185°</b>	Rwy Idg <b>12901</b> TDZE <b>1195</b> Apt Elev <b>1219</b>
---	------------------------	--

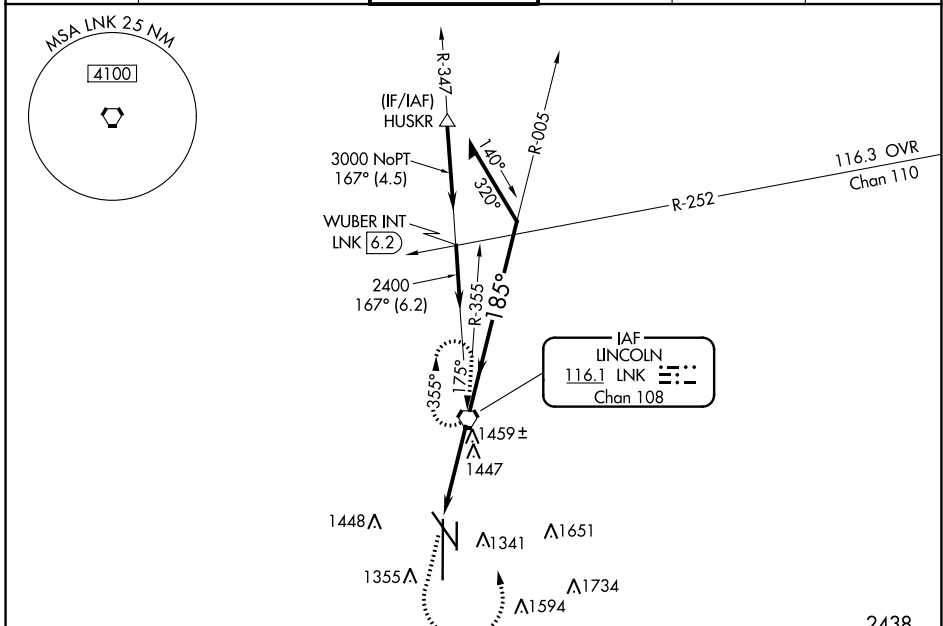
# VOR Y RWY 18

LINCOLN (LNK)

**⚠** Inop table does not apply. VDP NA when using Beatrice altimeter setting. When local altimeter setting not received, use Beatrice altimeter setting and increase all MDA 100 feet; increase S-18 all Cats visibility ¼ SM and Circling Cat C/D visibilities ¼ SM.

**MALSRL**  
  
MISSED APPROACH: Climb to 2800 then climbing left turn to 3100 direct LNK VORTAC and hold.

ATIS <b>118.05 290.9</b>	OMAHA APP CON <b>124.0 270.3</b>	LINCOLN TOWER* <b>118.5 (CTAF) 253.5</b>	GND CON <b>121.9 275.8</b>	CLNC DEL <b>120.7 225.4</b>	UNICOM <b>122.95</b>
-----------------------------	-------------------------------------	---	-------------------------------	--------------------------------	-------------------------



ELEV 1219	<b>D</b>	TDZE 1195
-----------	----------	-----------

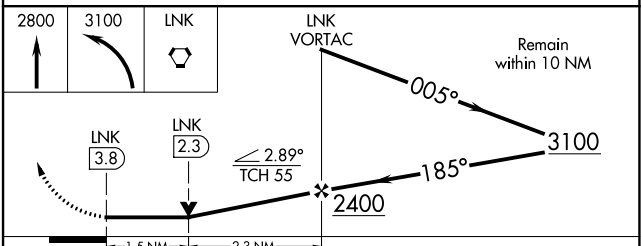
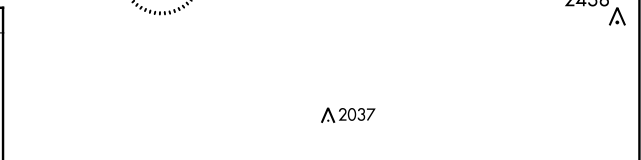
185° 3.8 NM from FAF

81, 80, 79, 78, 77, 76, 75, 74, 73, 72, 71, 70, 69, 68, 67, 66, 65, 64, 63, 62, 61, 60, 59, 58, 57, 56, 55, 54, 53, 52, 51, 50, 49, 48, 47, 46, 45, 44, 43, 42, 41, 40, 39, 38, 37, 36, 35, 34, 33, 32, 31, 30, 29, 28, 27, 26, 25, 24, 23, 22, 21, 20, 19, 18, 17, 16, 15, 14, 13, 12, 11, 10, 9, 8, 7, 6, 5, 4, 3, 2, 1

1241, 12901 X 200, TVR 1280, 36

HIRL Rwy 18-36  
REIL Rwy 14 and 17  
MRL Rwy 14-32 and 17-35  
FAF to MAP 3.8 NM

Knots	60	90	120	150	180
Min:Sec	3:48	2:32	1:54	1:31	1:16



CATEGORY	A	B	C	D
S-18	1720/55	525 (600-1)	1720-1½	525 (600-1½)
<b>C</b> CIRCLING	1720-1 501 (600-1)	1760-1 541 (600-1)	1820-1¾ 601 (700-1¾)	1960-2½ 741 (800-2½)

NC-2, 03 OCT 2024 to 31 OCT 2024

NC-2, 03 OCT 2024 to 31 OCT 2024