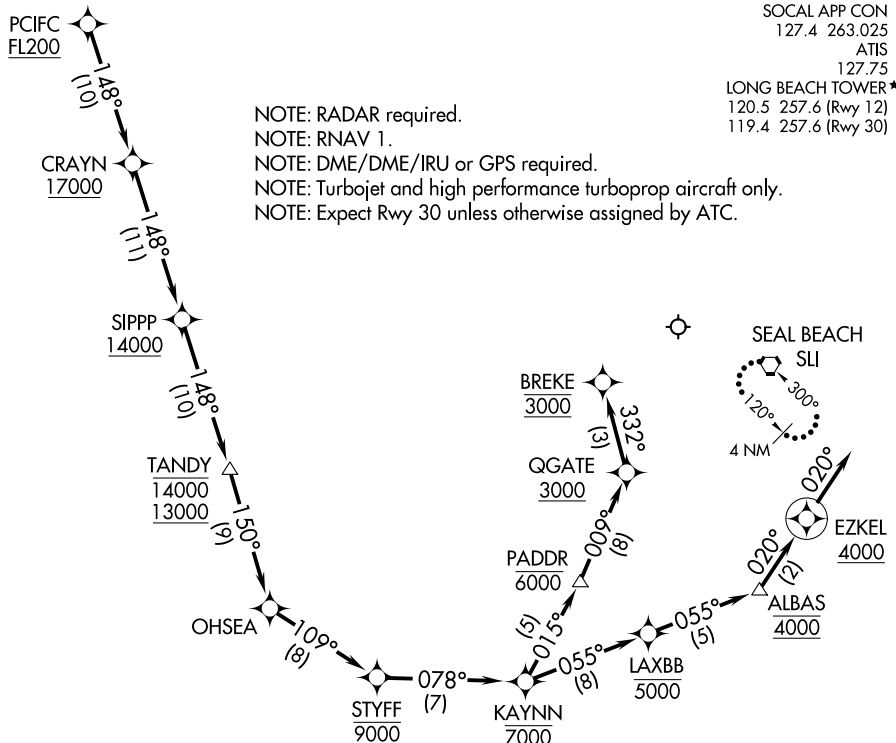


PCIFC TWO ARRIVAL (RNAV) Arrival Routes

LONG BEACH (DAUGHERTY FLD) (LGB)
LONG BEACH, CALIFORNIA



ARRIVAL ROUTE DESCRIPTION

From PCIFC on track 148° to cross CRAYN at or above 17000, then on track 148° to cross SIPPP at or above 14000, then on track 148° to cross TANDY between 13000 and 14000, then on track 150° to OHSEA, then on track 109° to cross STYFF at or below 9000.

LANDING RUNWAY 12: From STYFF on track 078° to cross KAYNN at or below 7000, then on track 015° to cross PADDR at or below 6000, then on track 009° to cross QGATE at or above 3000, then on track 332° to cross BREKE at 3000. Expect RNAV (RNP) RWY 12 approach.

LANDING RUNWAYS 26R, 30: From STYFF on track 078° to cross KAYNN at or below 7000, then on track 055° to cross LAXBB at or below 5000, then on track 055° to cross ALBAS at 4000, then on track 020° to cross EZKEL at or above 4000, then on track 020°. Expect RNAV (RNP) Y RWY 30 or RADAR vectors to final approach course.

LOST COMMUNICATIONS

LANDING RUNWAYS 26R, 30: After ALBAS proceed on the RNAV (RNP) Y RWY 30 or ILS or LOC RWY 30 approach.

LANDING RUNWAY 12: After BREKE proceed on the RNAV (RNP) RWY 12 approach. If unable approach to LGB, after ALBAS/BREKE climb to 4000 direct SLI VORTAC and hold.