

VISTA THREE ARRIVAL

SW-3, 03 OCT 2024 to 31 OCT 2024

ARRIVAL ROUTE DESCRIPTION

JULIAN TRANSITION (JLI.VISTA3): From over JLI VORTAC on JLI R-263 and OCN R-083 to VISTA. Thence, . . .

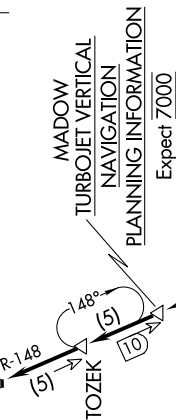
. . . from VISTA to CYNDE on OCN R-083. From CYNDE to OCN VORTAC on OCN R-083. From OCN VORTAC to SHIVE on OCN R-259 and SJI R-148. From SHIVE to CWARD on SJI R-148. From CWARD to BAYER on SJI R-148. From BAYER to MADOW on SJI R-148. From MADOW to TOZEK on SJI R-148. From TOZEK to SJI VORTAC on SJI R-148. Expect RADAR vectors to final approach course for Runways 24 or 25.



SOCAL APP CON
128.1 281.4
D-ATIS ARR
133.8

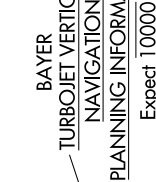


SEAL BEACH
115.7 SJI
Chan 104



TOZEK
(5)

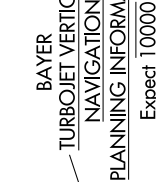
MADOW
TURBOJET VERTICAL
NAVIGATION
PLANNING INFORMATION
Expect 7000



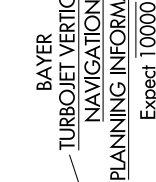
BAYER
TURBOJET VERTICAL
NAVIGATION
PLANNING INFORMATION
Expect 10000

CWARD
(5)

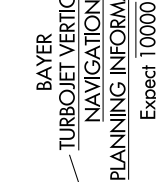
SHIVE
(7) (32)



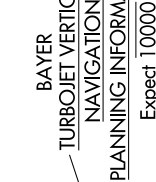
OCEANSIDE
115.3 OCN
Chan 100



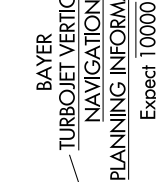
CYNDE
TURBOJET VERTICAL
NAVIGATION
PLANNING INFORMATION
Expect 14000



MISSION BAY
117.8 MZB
Chan 125



JULIAN
114.0 JLI
Chan 87



NOTE: DME and RADAR required.
NOTE: Chart not to scale.

VISTA THREE ARRIVAL

SW-3, 03 OCT 2024 to 31 OCT 2024