

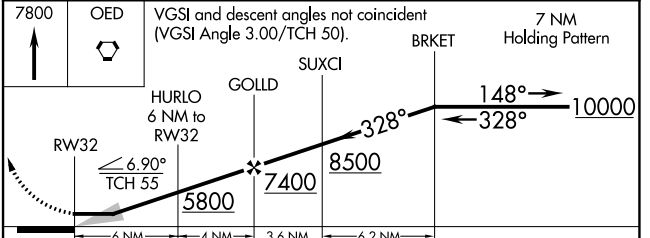
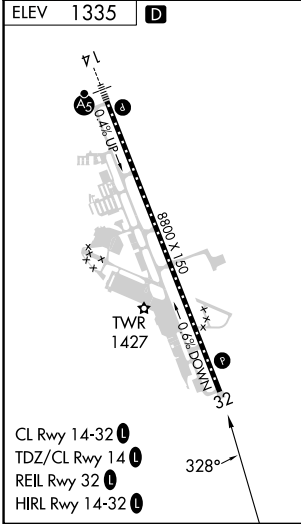
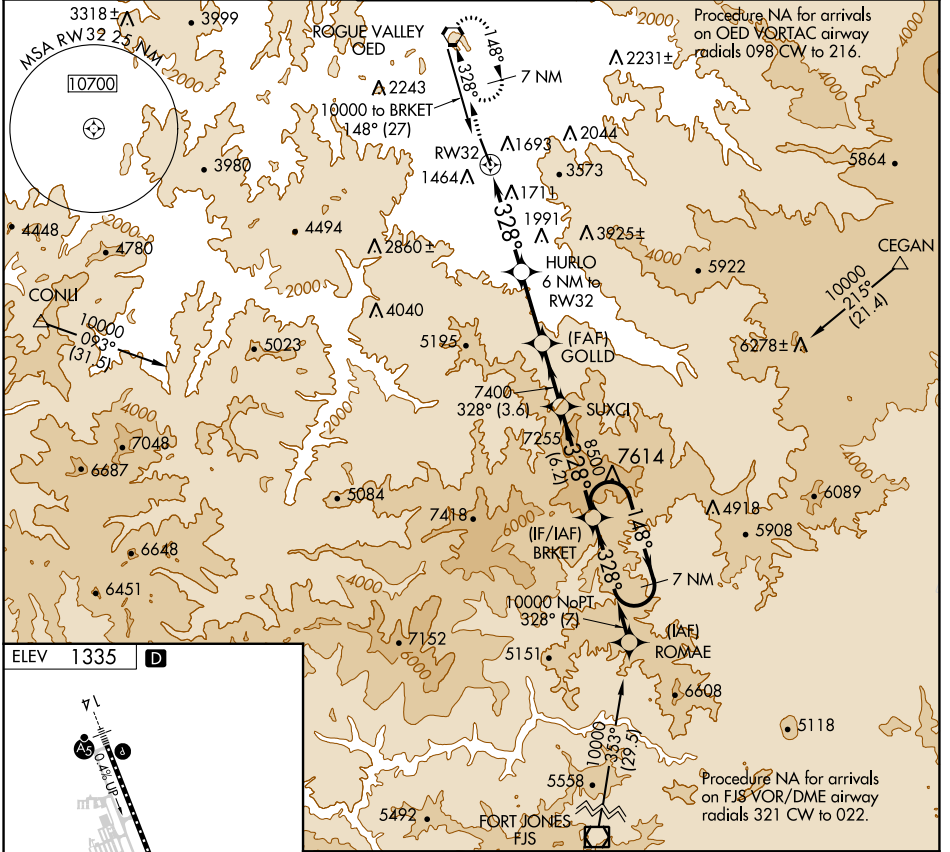
APP CRS	Rwy Idg	N/A
328°	TDZE	N/A
	Apt Elev	1335

RNAV (GPS)-D

ROGUE VALLEY INTL-MEDFORD (MFR)

RNP APCH.		MISSED APPROACH: Climb to 7800 direct OED VORTAC and hold, continue climb-in-hold to 7800.	
<p>Circling NA for Cats C and D northeast of Rwy 14-32. -3°C</p>			

ATIS	CASCADE APP CON *	MEDFORD TOWER *	GND CON	UNICOM
127.25	124.3 379.9	119.4 (CTAF) 257.8	121.8	122.95



7800	OED	VGSIs and descent angles not coincident (VGSIs Angle 3.00/TCH 50).		7 NM	Holding Pattern
		HURLO 6 NM to RW32	GOLDD	SUXCI	BRKET
CATEGORY	A	B	C	D	
CIRCLING	3600-1¼ 2265 (2300-1¼)	3600-1½ 2265 (2300-1½)	3600-3	2265 (2300-3)	

NW-1, 03 OCT 2024 to 31 OCT 2024

NW-1, 03 OCT 2024 to 31 OCT 2024