

LOC I-MEI 110.1	APP CRS 011°	Rwy Idg 9013 TDZE 289 Apt Elev 298
---------------------------	------------------------	--

ILS or LOC RWY 1

KEY FLD (MEI)

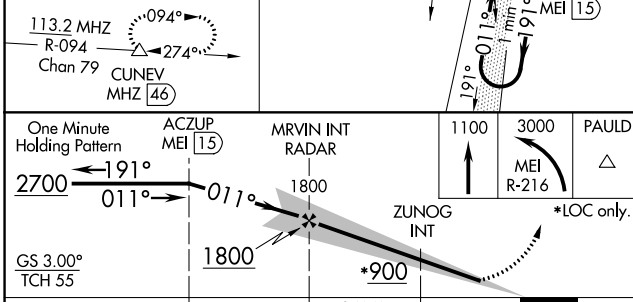
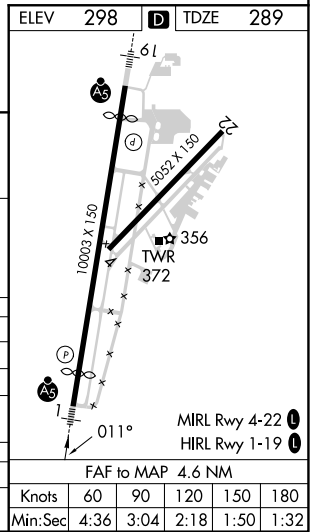
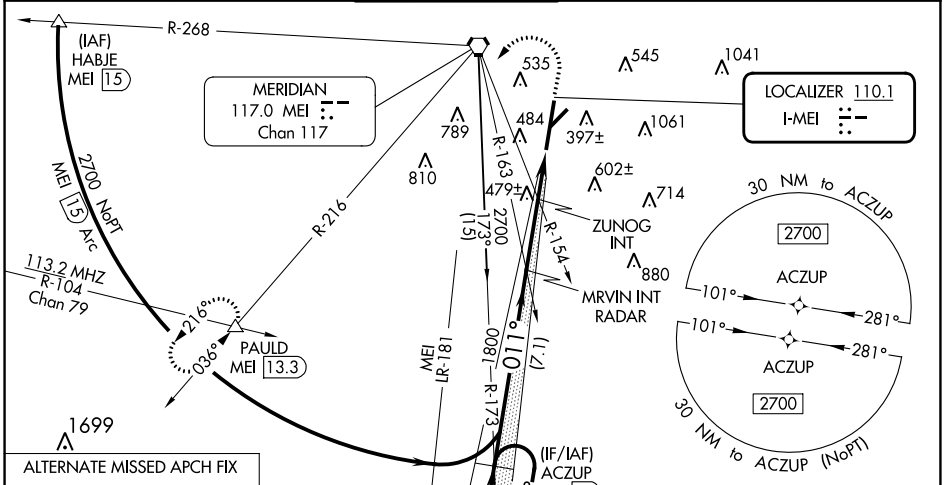
RNAV 1- GPS or DME required for procedure entry.

⚠ Circling NA southeast of Rwy 1 and 22. When local altimeter not received, use Hattiesburg/Laurel Rgnl altimeter setting and increase all DA 138 feet and all MDA 140 feet, S-ILS 1 all Cats visibility to RVR 3500, S-LOC 1 Cat B visibility to RVR 4000, Cat C, D, and E visibility 3/8 mile, and Circling Cats B and D visibility 1/4 mile, Cat C visibility 1/2 mile; increase ZUNOG Fix minimums S-LOC 1 Cats C, D, and E to RVR 6000, and Circling Cat C visibility 1/2 mile, Cat D and E visibility 1/4 mile. For inop MALSR when using Hattiesburg/Laurel Rgnl altimeter setting, increase S-ILS 1 all Cats visibility to RVR 6000 and S-LOC 1 Cat E visibility to 1 3/8 mile; increase ZUNOG Fix minimums S-LOC 1 Cat E visibility to 2 miles. Circling Rwy 22 NA at night. ** RVR 1800 authorized with use of FD or AP or HUD to DA (NA when using Hattiesburg/Laurel Rgnl altimeter setting).

MALSR

MISSED APPROACH: Climb to 1100 then climbing left turn to 3000 on MEI VORTAC R-216 to PAULD INT/MEI 13.3 DME and hold.

ATIS 126.475 291.675	MERIDIAN APP CON * 120.5 269.325	KEY TOWER * 133.975 (CTAF) 0 257.8	GND CON 121.9 348.6	CLNC DEL 121.9 348.6	UNICOM 122.95
--------------------------------	--	--	-------------------------------	--------------------------------	-------------------------



CATEGORY	A	B	C	D	E
S-ILS 1	** 489/24 200 (200-1/2)				
S-LOC 1	900/24	611 (700-1/2)	900-1 3/8	611 (700-1 3/8)	
C CIRCLING	900-1	602 (700-1)	960-1 3/4	1120-2 3/4	1120-3
	ZUNOG FIX MINIMUMS				
S-LOC 1	700/24	411 (500-1/2)	700/40	411 (500-3/4)	
C CIRCLING	860-1 562 (600-1)	880-1 582 (600-1)	960-1 3/4 662 (700-1 3/4)	1120-2 3/4 822 (900-2 3/4)	1120-3 822 (900-3)

SC-4, 03 OCT 2024 to 31 OCT 2024

SC-4, 03 OCT 2024 to 31 OCT 2024