

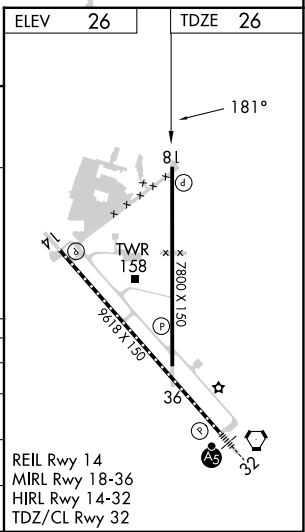
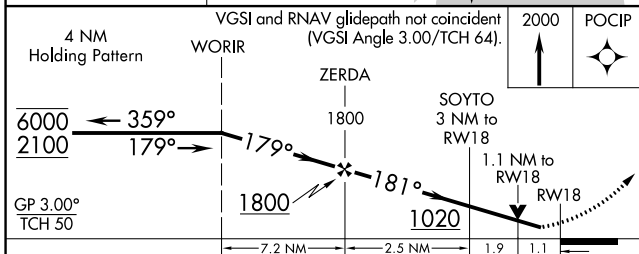
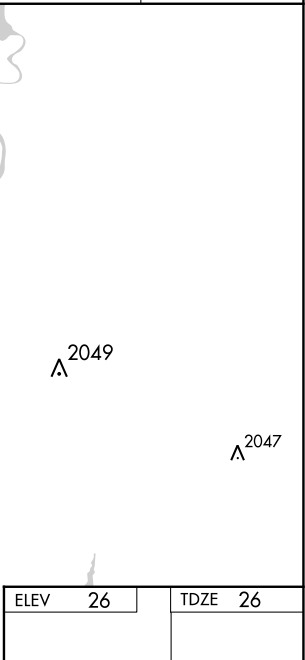
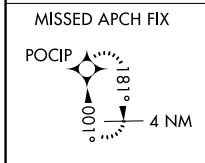
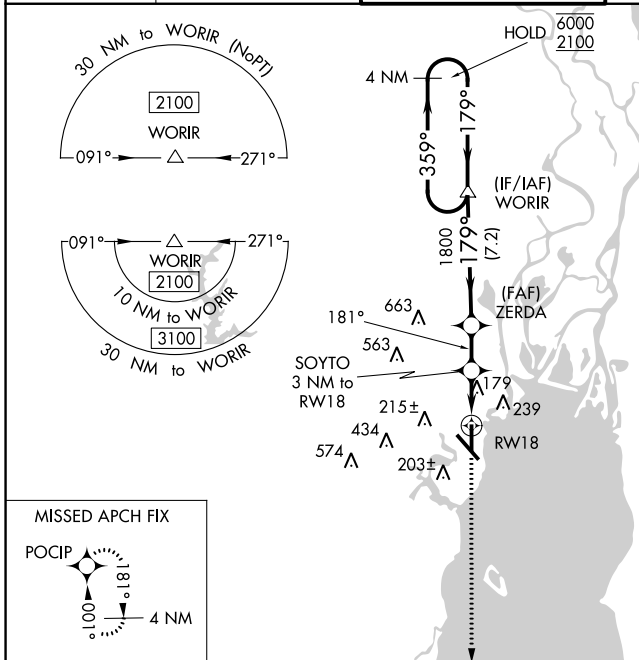
WAAS CH 97611 W18A	APP CRS 181°	Rwy Idg 7800 TDZE 26 Apt Elev 26
--	------------------------	---

RNAV (GPS) RWY 18

MOBILE INTL (BFM)

RNP APCH - GPS.		<p>⚠ Rwy 18 helicopter visibility reduction below 3/4 SM NA. For uncompensated Baro-VNAV systems, LNAV/VNAV NA below -2°C or above 54°C.</p>	<p>MISSED APPROACH: Climb to 2000 direct POCIP and hold.</p>

<p>ATIS 135.575</p>	<p>MOBILE APP CON * 118.5 269.3</p>	<p>INTERNATIONAL TOWER * 118.8 (CTAF) 0 251.1</p>	<p>GND CON 121.7 239.3</p>	<p>UNICOM 122.95</p>
--------------------------------	--	--	---------------------------------------	---------------------------------



CATEGORY	A	B	C	D
LPV DA		276-1	250 (300-1)	
LNAV/VNAV DA		419-1 1/8	393 (400-1 1/8)	
LNAV MDA	440-1	414 (500-1)	440-1 1/8	414 (500-1 1/8)
C CIRCLING	680-1	654 (700-1)	680-1 3/4 654 (700-1 3/4)	1100-3 1074 (1100-3)

ELEV 26	TDZE 26
---------	---------

Diagram showing the RWY 18 approach path, including the 181° approach, the 1800' glide path, and the 1020' glide path. Includes the 4 NM holding pattern and the 2000' POCIP.

SE-4, 03 OCT 2024 to 31 OCT 2024

SE-4, 03 OCT 2024 to 31 OCT 2024