

APP CRS	Rwy Idg	5008
062°	TDZE	21
	Apt Elev	36

RNAV (GPS) RWY 6

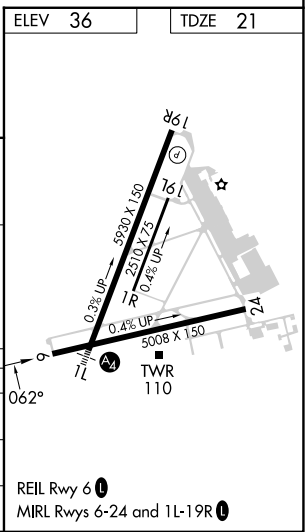
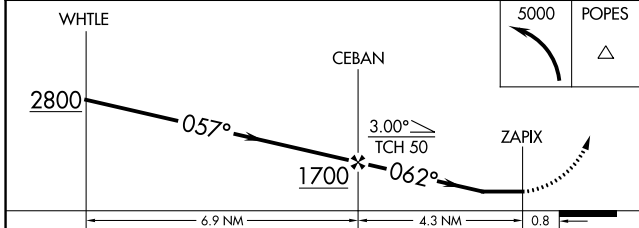
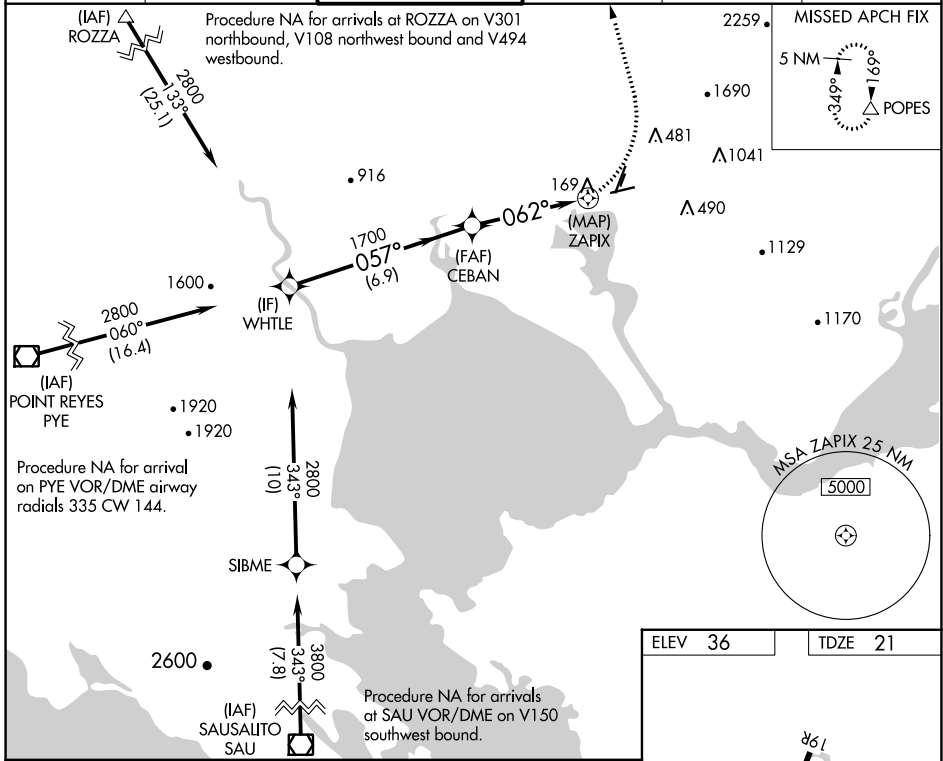
NAPA COUNTY (APC)

RNP APCH-GPS.

▼ Rwy 6 helicopter visibility reduction below ¾ SM NA.
 ▲ Circling Cats A/B/C NA east of Rwy 19R and northwest of Rwy 24. Circling Cat D NA east of Rwy 19L-1R.

MISSED APPROACH: Climbing left turn to 5000 direct POPES and hold, continue climb-in-hold to 5000.
 *Missed approach requires minimum climb of 410 feet per NM to 2200.

ATIS 124.05	OAKLAND CENTER 127.8 353.5	NAPA TOWER * 118.7 (CTAF) 257.8	GND CON 121.7	CLNC DEL 127.85	UNICOM 122.95
-----------------------	--------------------------------------	---	-------------------------	---------------------------	-------------------------



SW-2, 03 OCT 2024 to 31 OCT 2024

SW-2, 03 OCT 2024 to 31 OCT 2024