

LOC/DME I-NEW <b>111.3</b> Chan <b>50</b>	APP CRS <b>177°</b>	Rwy Idg <b>5510</b> TDZE <b>8</b> Apt Elev <b>8</b>
---	------------------------	---

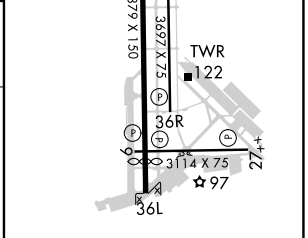
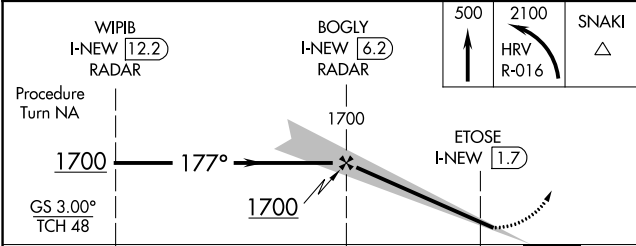
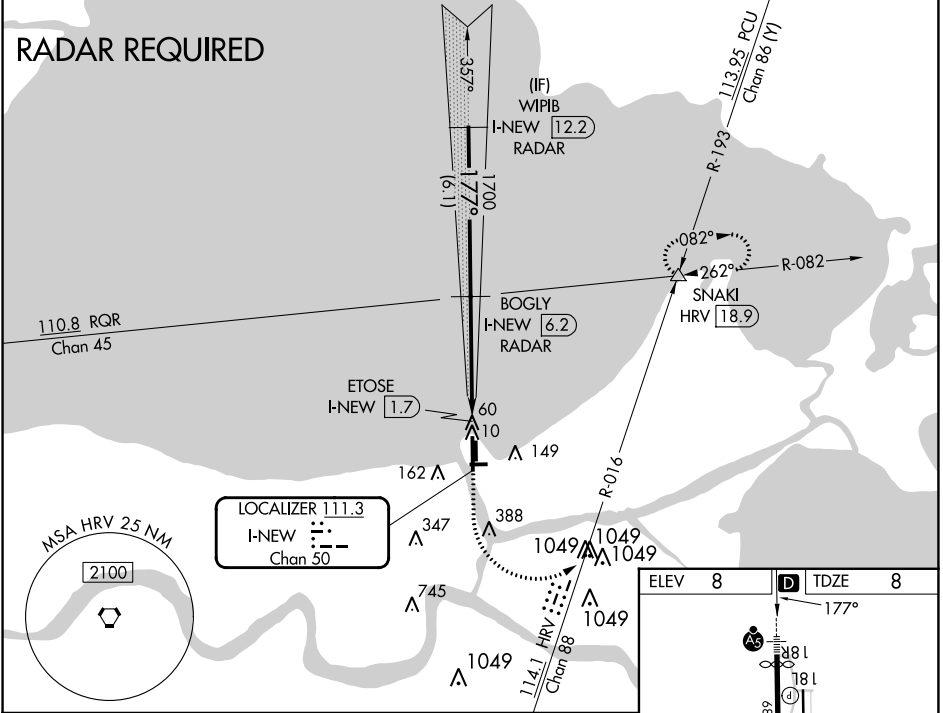
# ILS or LOC RWY 18R LAKEFRONT (NEW)

**▽** Inop table does not apply to S-ILS 18R. For inop MALSR when using Louis Armstrong New Orleans Intl altimeter setting, increase S-LOC 18R Cats A-C visibility to 1 mile. For inop MALSR, increase S-LOC 18R all Cats visibility to 1 mile. DME or RADAR required. Visibility reduction by helicopters NA. When local altimeter setting not received, use Louis Armstrong New Orleans Intl altimeter setting and increase all DA 29 feet and all MDA 40 feet; increase Circling Cat D visibility ¼ mile.



**MISSED APPROACH:** Climb to 500 then climbing left turn to 2100 on HRV VORTAC R-016 to SNAKI INT and hold.

ATIS <b>124.9</b>	NEW ORLEANS APP CON NORTH <b>133.15 290.3</b> SOUTH <b>123.85 256.9</b>	LAKEFRONT TOWER ★ <b>118.95 (CTAF) 0</b>	GND CON <b>121.7 335.575</b>	CLNC DEL <b>127.4</b>
----------------------	---	---	---------------------------------	--------------------------



CATEGORY	A	B	C	D	MRL Rwy 18R-36L	MRL Rwy 9-27 and 18L-36R	REIL Rwy 9, 18L, 36L and 36R	FAF to MAP 4.5 NM
S-ILS 18R		258-3/4	250 (300-3/4)					
S-LOC 18R		320-3/4	312 (400-3/4)					
CIRCLING	480-1 472 (500-1)	520-1 512 (600-1)	700-2 692 (700-2)	820-2 3/4 812 (900-2 3/4)				
	Knots 60 90 120 150 180							
	Min:Sec 4:30 3:00 2:15 1:48 1:30							

SC-4, 03 OCT 2024 to 31 OCT 2024

SC-4, 03 OCT 2024 to 31 OCT 2024