

APP CRS	Rwy Idg	6213
278°	TDZE	9
	Apt Elev	9

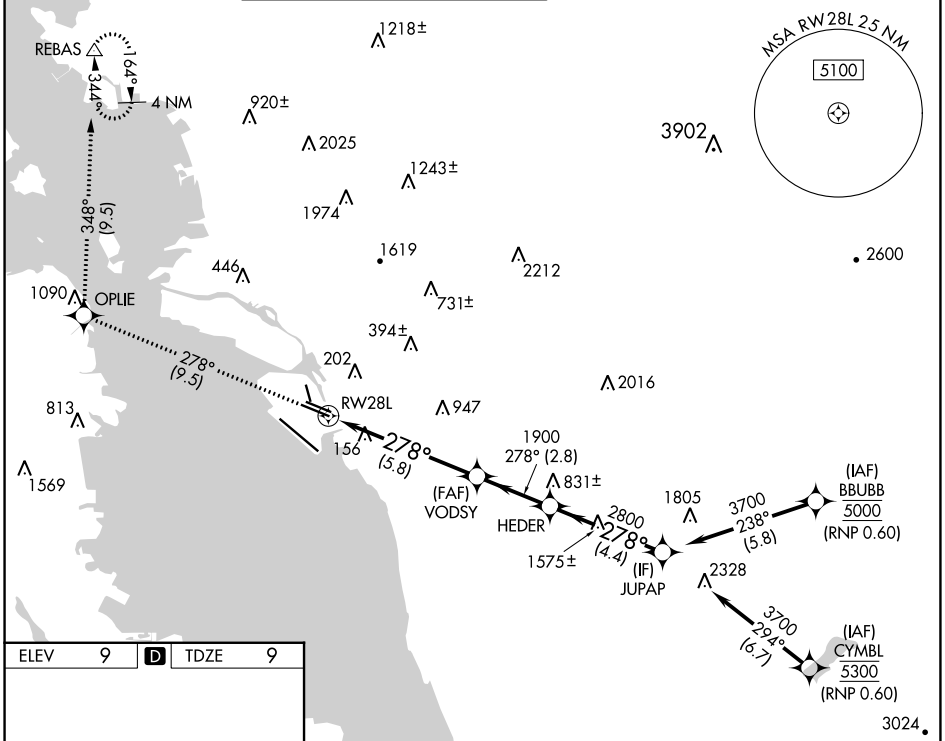
RNAV (RNP) Z RWY 28L

SAN FRANCISCO BAY OAKLAND INTL (OAK)

▼ For uncompensated Baro-VNAV systems, procedure NA below 0°C (32°F) or above 54°C (130°F). GPS required.

MISSED APPROACH: Climb to 3000 on track 278° to OPLIE and on track 348° to REBAS and hold.

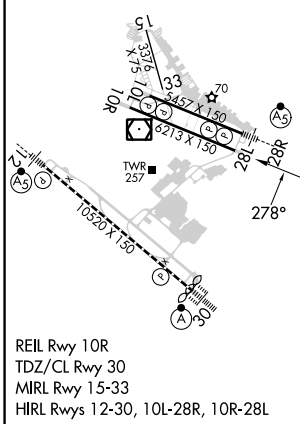
D-ATIS	NORCAL APP CON	OAKLAND TOWER	GND CON	CLNC DEL	CPDLC
133.775	125.35 263.15	118.3 291.65 (Rwys 10L/R-28L/R, 15-33) 127.2 256.9 (Rwy 12-30)	121.9 (Rwys 10L/R-28L/R, 15-33) 121.75 (Rwy 12-30)	121.1	



SW-2, 03 OCT 2024 to 31 OCT 2024

SW-2, 03 OCT 2024 to 31 OCT 2024

ELEV	9	D	TDZE	9
------	----------	----------	------	----------



3000	OPLIE	REBAS	VGS1 and RNAV glidepath not coincident (VGS1 Angle 3.00/TCH 50).		JUPAP
tr 278°	tr 348°	tr 348°	VODSY	HEDER	3700
			1900	2800	1900
			5.8 NM	2.8 NM	4.4 NM
CATEGORY	A	B	C	D	
RNP 0.15 DA	341/53		332 (400-1)		
RNP 0.30 DA	399-1¼		390 (400-1¼)		
AUTHORIZATION REQUIRED					