

WAAS CH <b>72700</b> <b>W28A</b>	APP CRS <b>278°</b>	Rwy Idg TDZE Apt Elev	<b>6213</b> <b>9</b> <b>9</b>
--	------------------------	-----------------------------	-------------------------------------

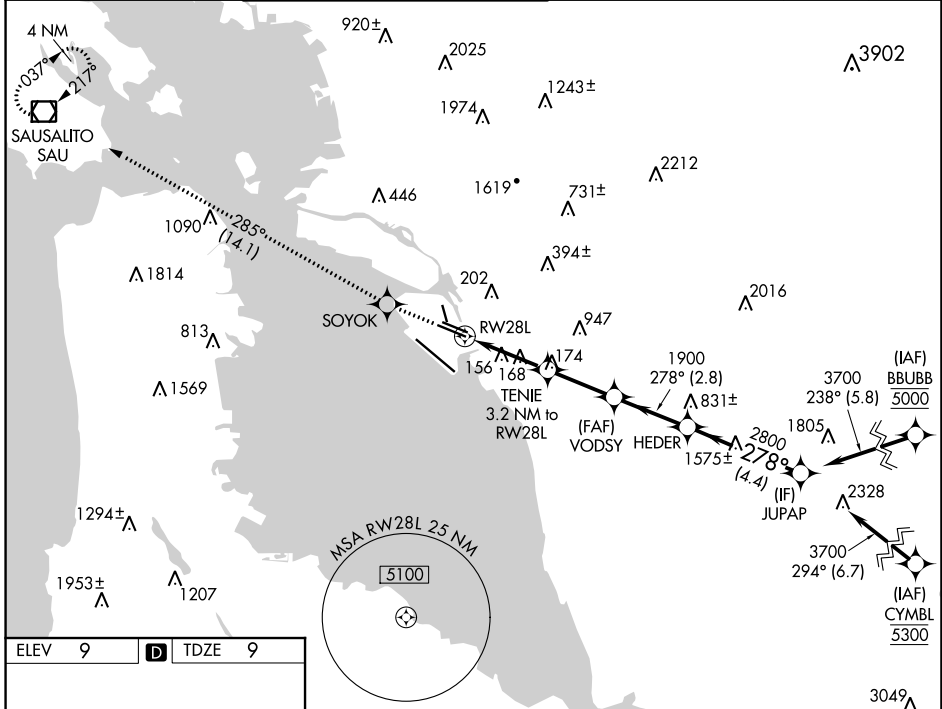
# RNAV (GPS) Y RWY 28L

SAN FRANCISCO BAY OAKLAND INTL (OAK)

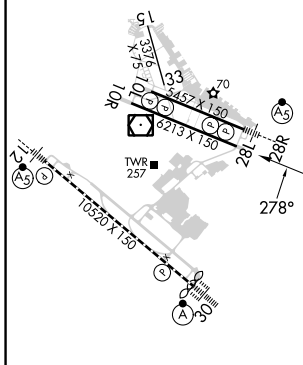
**▼** For uncompensated Baro-VNAV systems, LNAV/VNAV NA below 0°C (32°F) or above 54°C (130°F).  
**▲** DME/DME RNP-0.3 NA.

**MISSED APPROACH:** Climb to 4000 direct SOYOK and on track 285° to SAU VOR/DME and hold, continue climb-in-hold to 4000.

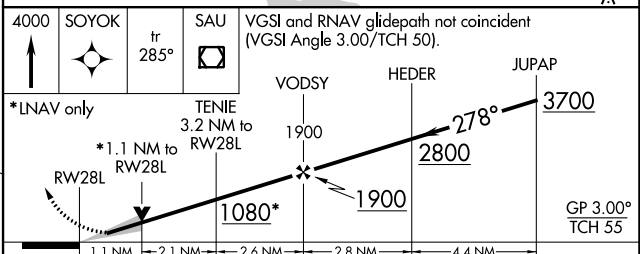
D-ATIS <b>133.775</b>	NORCAL APP CON <b>125.35 263.15</b>	OAKLAND TOWER <b>118.3 291.65</b> (Rwys 10L/R-28L/R, 15-33) <b>127.2 256.9</b> (Rwy 12-30)	GND CON <b>121.9</b> (Rwys 10L/R-28L/R, 15-33) <b>121.75</b> (Rwy 12-30)	CLNC DEL <b>121.1</b>	CPDLC
--------------------------	--	--	--	--------------------------	-------



ELEV	9	<b>D</b>	TDZE	9
------	---	----------	------	---



REIL Rwy 10R  
TDZ/CL Rwy 30  
MIRL Rwy 15-33  
HIRL Rwys 12-30, 10L-28R, 10R-28L



CATEGORY	A		B	C	D
	LPV DA	209/40		200 (200-¾)	
LNAV/VNAV DA	387-1¼		378 (400-1¼)		
LNAV MDA	420/55	411 (500-1)	420/60	411 (500-1¼)	
<b>C</b> CIRCLING	560-1	551 (600-1)	660-1¾ 651 (700-1¾)	1400-3	1391 (1400-3)

SW-2, 03 OCT 2024 to 31 OCT 2024

SW-2, 03 OCT 2024 to 31 OCT 2024