

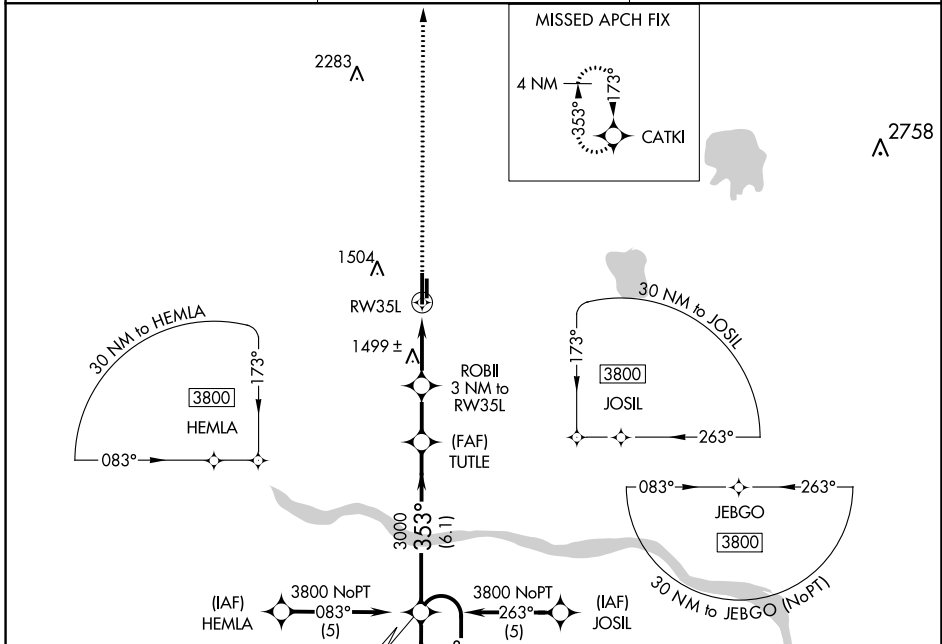
WAAS CH 86901 W35A	APP CRS 353°	Rwy ldg 6014 TDZE 1350 Apt Elev 1354
--	------------------------	---

RNAV (GPS) RWY 35L

CLARENCE E PAGE MUNI (R/C/E)

<p>▼ DME/DME RNP-0.3 NA. Visibility reduction by helicopters NA. When local altimeter setting not received, use Wiley Post altimeter setting and increase all DA 29 feet and all MDA 40 feet and increase LPV all Cats visibility ¼ mile.</p> <p>▲ VDP NA when using Wiley Post altimeter setting.</p>	<p>MISSED APPROACH: Climb to 3800 direct CATKI and hold.</p>
--	--

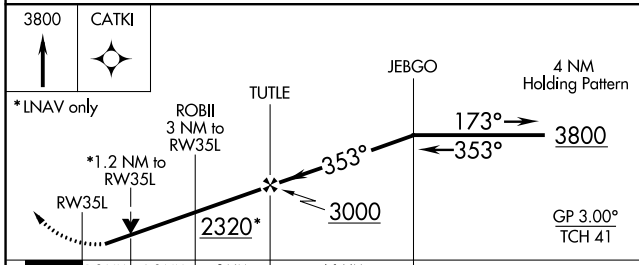
<p>AWOS-3 125.05</p>	<p>OKE CITY APP CON 124.6 266.8</p>	<p>UNICOM 123.0 (CTAF) 0</p>
---------------------------------	--	---



SC-1, 03 OCT 2024 to 31 OCT 2024

SC-1, 03 OCT 2024 to 31 OCT 2024

ELEV 1354	TDZE 1350
------------------	------------------



CATEGORY	A	B	C	D
LPV DA	1651-1 301 (300-1)			NA
RNAV MDA	1760-1	410 (500-1)	1760-1¼ 410 (500-1¼)	NA
CIRCLING	1800-1 446 (500-1)	1820-1 466 (500-1)	1840-1½ 486 (500-1½)	NA

