

OKLAHOMA CITY, OKLAHOMA

HI-ILS or LOC/DME Y RWY 18

LOC I-FRJ 111.3	APCH CRS 177°	Rwy Idg 11,100 TDZE 1267 Arprt Elev 1291
---------------------------	-------------------------	---

[USAF]

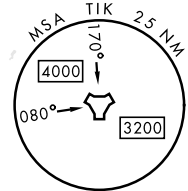
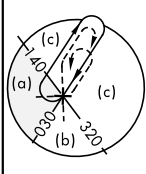
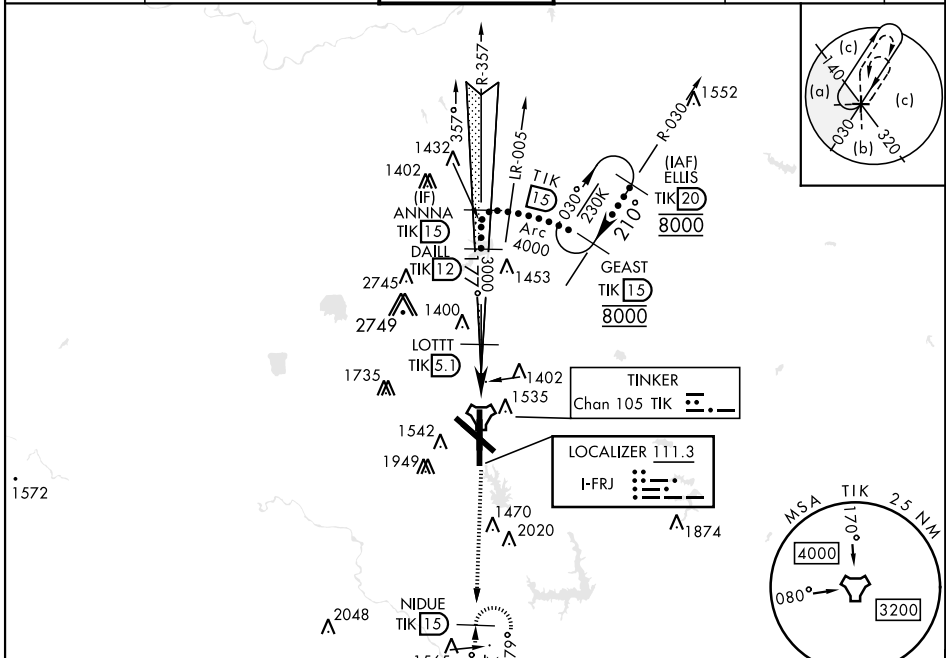
TINKER AFB (KTIK)

▼ * When ALS inop, increase CAT CDE RVR to 55 and vis to 1 mile.
 ** CAT E circling NA in sector S of Rwy 13-31 and W of RWY 18. Circling NA to Rwy 18.

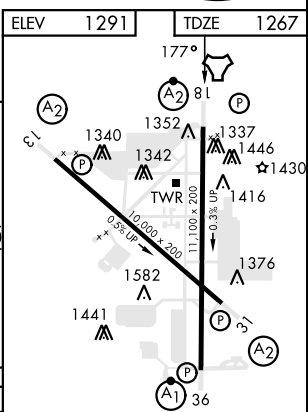
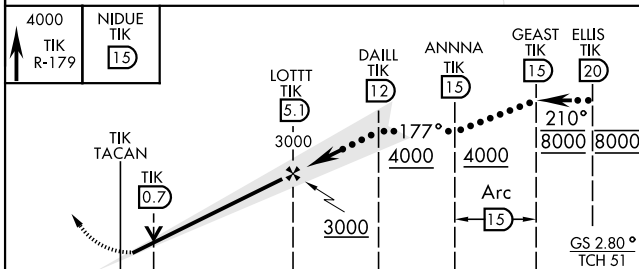


MISSED APPROACH: Climb to 4000 on TIK TACAN R-179 to NIDUE and hold.

ATIS ★ 270.1	OKE CITY APP CON 124.2 336.4	TOWER 124.45 251.05	GND CON 121.8 275.8	CLNC DEL 119.7 335.8	ASR
------------------------	--	-------------------------------	-------------------------------	--------------------------------	-----



Localizer unusable within 0.4 NM from threshold.
 Localizer NA beyond 15° right of course.
 EMERG SAFE ALT 100 NM 4700



4000 TIK R-179	NIDUE TIK (15)	LOTT TIK (5.1)	DAILL TIK (12)	ANNNA TIK (15)	GEAST TIK (15)	ELLIS TIK (20)
3000		4000		4000		8000 8000
3000		4000		4000		8000 8000
0.8		4.8 NM				GS 2.80° TCH 51
CATEGORY	C	D	E			
S-ILS 18	1467/40	200	(200-¾)			
S-LOC 18 *	1640/40	373	(400-¾)			
CIRCLING **	1960-1¾ 669 (700-1¾)	1960-2 669 (700-2)	1960-2¼ 669 (700-2¼)			

HIRL all rwys		FAF to MAP 4.8 NM				
Knots	120	140	160	180	200	
Min:Sec	2:24	2:03	1:48	1:36	1:26	

OKLAHOMA CITY, OKLAHOMA

35°25'N-97°23'W

TINKER AFB (KTIK)

Amtd 6 13JUN24

HI-ILS or LOC/DME Y RWY 18

SC-1, 03 OCT 2024 to 31 OCT 2024

SC-1, 03 OCT 2024 to 31 OCT 2024