

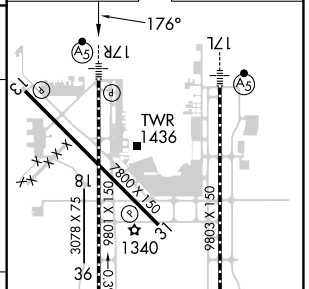
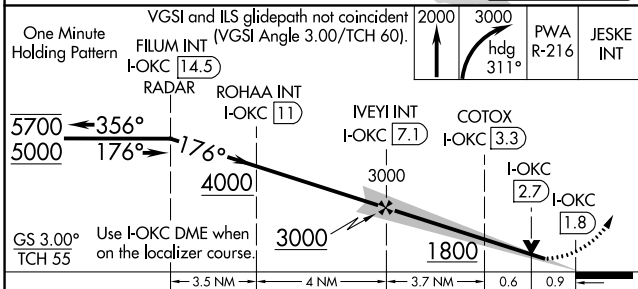
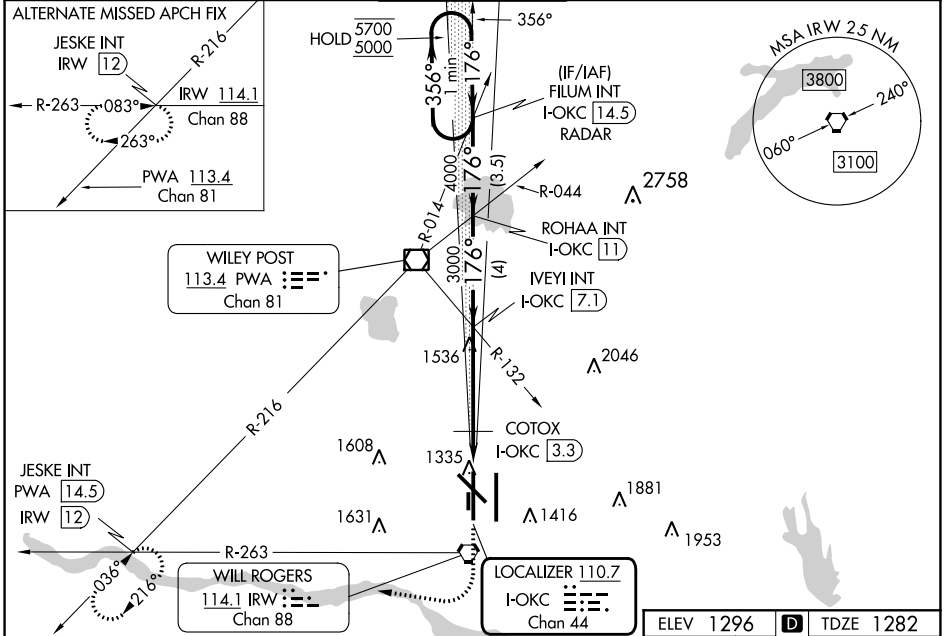
LOC/DME I-OKC 110.7 Chan 44	APP CRS 176°	Rwy Ldg 9800 TDZE 1282 Apt Elev 1296
--	------------------------	---

ILS or LOC RWY 17R

WILL ROGERS WORLD (OKC)

RADAR required for procedure entry. Simultaneous approach authorized. For inop ALS, increase S-ILS 17R Cat E visibility to RVR 4000; increase S-LOC 17R Cats C, D and E visibilities to 1 $\frac{3}{8}$ SM. * RVR 1800 authorized with use of FD or AP or HUD to DA. ASR		MALSR 	MISSED APPROACH: Climb to 2000 then climbing right turn to 3000 on heading 311° and on PWA VOR/DME R-216 to JESKE INT/PWA 14.5 DME and hold.
---	--	------------------	---

D-ATIS 125.85	OKE CITY APP CON 124.6 266.8	ROGERS TOWER 119.35 269.45	GND CON 121.9 348.6	CLNC DEL 124.35
-------------------------	--	---	-------------------------------	---------------------------



CATEGORY	A	B	C	D	E
S-ILS 17R*	1482/24 200 (200- $\frac{1}{2}$)				
S-LOC 17R	1800/24	518 (600- $\frac{1}{2}$)	1800/55 518 (600-1)		
CIRCLING	1800-1	504 (600-1)	1960-1 $\frac{3}{4}$ 664 (700-1 $\frac{3}{4}$)	2000-2 $\frac{1}{4}$ 704 (800-2 $\frac{1}{4}$)	2240-3 944 (1000-3)
COTOX FIX MINIMUMS					
S-LOC 17R	1620/24	338 (400- $\frac{1}{2}$)	1620/26	338 (400- $\frac{1}{2}$)	
CIRCLING	1740-1 444 (500-1)	1760-1 464 (500-1)	1960-1 $\frac{3}{4}$ 664 (700-1 $\frac{3}{4}$)	2000-2 $\frac{1}{4}$ 704 (800-2 $\frac{1}{4}$)	2240-3 944 (1000-3)
TDZ/CL Rwy 35R MIRL Rwy 13-31 REIL Rwys 13 and 31 HIRL Rwys 17L-35R and 17R-35L FAF to MAP 5.2 NM Knots: 60 90 120 150 180 Min:Sec: 5:12 3:28 2:36 2:05 1:44					

WILL ROGERS WORLD (OKC)

ILS or LOC RWY 17R

SC-1, 03 OCT 2024 to 31 OCT 2024

SC-1, 03 OCT 2024 to 31 OCT 2024