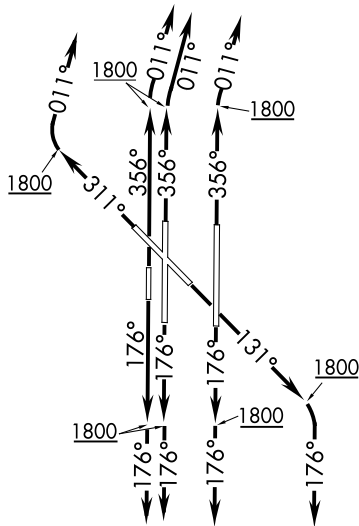


# KRMSN FOUR DEPARTURE (RNAV)

**TOP ALTITUDE:  
ASSIGNED BY ATC**

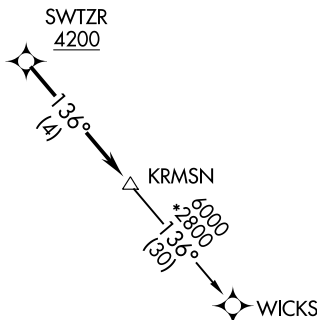
- D-ATIS 125.85
- CLNC DEL 124.35
- GND CON 121.9 348.6
- ROGERS TOWER 119.35 269.45
- OKE CITY DEP CON 124.2 336.4



NOTE: RADAR required.  
 NOTE: DME/DME/IRU or GPS required.  
 NOTE: RNAV 1.

### TAKEOFF MINIMUMS

Rwys 13, 17L/R, 18, 31, 35L/R, 36: Standard with minimum climb of 500' per NM to 1800.



NOTE: Chart not to scale.

### DEPARTURE ROUTE DESCRIPTION

**TAKEOFF RUNWAY 13:** Climb on heading 131° to 1800, then right turn heading 176° or as assigned by ATC, expect RADAR vectors to cross SWTZR at or above 4200, thence...

**TAKEOFF RUNWAYS 17L/R, 18:** Climb on heading 176° to 1800, then heading 176° or as assigned by ATC, expect RADAR vectors to cross SWTZR at or above 4200, thence...

**TAKEOFF RUNWAY 31:** Climb on heading 311° to 1800, then right turn heading 011° or as assigned by ATC, expect RADAR vectors to cross SWTZR at or above 4200, thence...

**TAKEOFF RUNWAYS 35L/R, 36:** Climb on heading 356° to 1800, then right turn heading 011° or as assigned by ATC, expect RADAR vectors to cross SWTZR at or above 4200, thence...

... on track 136° to KRMSN, then on (transition). Maintain ATC assigned altitude. Expect filed altitude 10 minutes after departure.

### WICKS TRANSITION (KRMSN4.WICKS)

# KRMSN FOUR DEPARTURE (RNAV)

SC-1, 03 OCT 2024 to 31 OCT 2024

SC-1, 03 OCT 2024 to 31 OCT 2024