

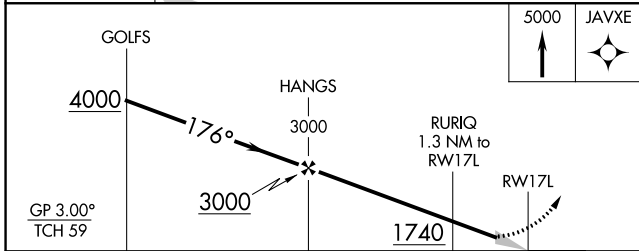
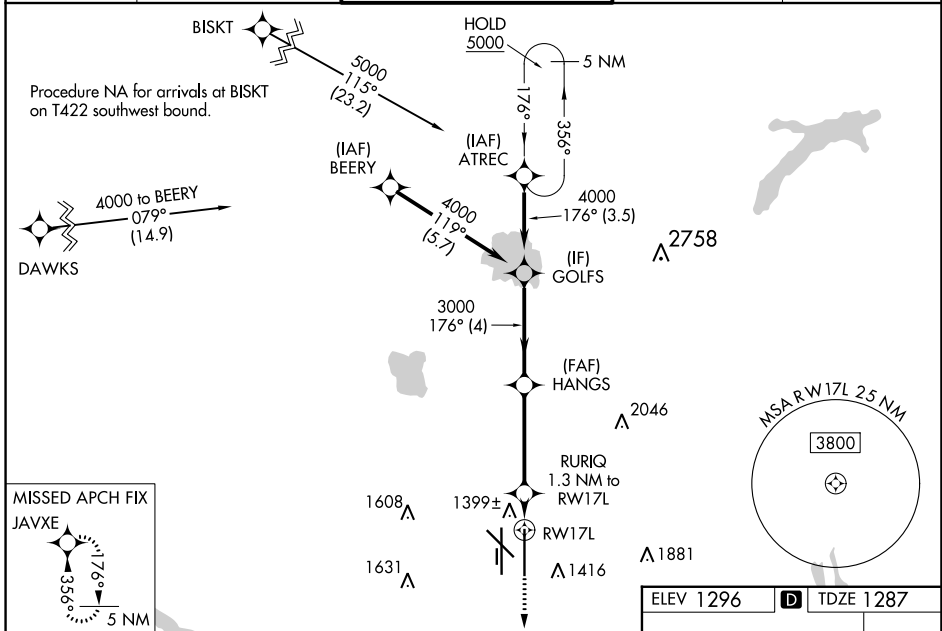
WAAS CH <b>56503</b> <b>W17B</b>	APP CRS <b>176°</b>	Rwy Idg <b>9802</b> TDZE <b>1287</b> Apt Elev <b>1296</b>
--	------------------------	---

# RNAV (GPS) Y RWY 17L

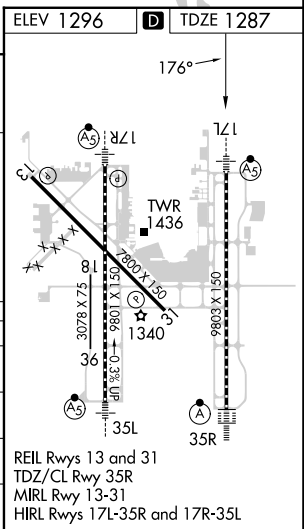
WILL ROGERS WORLD (OKC)

RNP APCH-GPS.	MALSR	MISSED APPROACH: Climb to 5000 direct JAVXE and hold, continue climb-in-hold to 5000.
<p>Simultaneous approach authorized. LNAV procedure NA during simultaneous operations. Use of FD or AP required during simultaneous operations. For uncompensated Baro-VNAV systems, LNAV/VNAV NA below -12°C or above 54°C. For inop ALS, increase LPV Cat E visibility to RVR 4000, LNAV/VNAV Cat E visibility to RVR 4500, and LNAV all Cats visibility to RVR 5500.</p> <p>* RVR 1800 authorized with use of FD or AP or HUD to DA.</p>		

D-ATIS <b>125.85</b>	OKE CITY APP CON <b>124.6 266.8</b>	ROGERS TOWER <b>119.35 269.45</b>	GND CON <b>121.9 348.6</b>	CLNC DEL <b>124.35</b>
-------------------------	--	--------------------------------------	-------------------------------	---------------------------



CATEGORY	A	B	C	D	E
LPV DA*	1487/24		200 (200-½)		
LNAV/VNAV DA	1590/24		303 (300-½)		
LNAV MDA	1660/24	373 (400-½)	1660/35		373 (400-¾)
CIRCLING	1740-1 444 (500-1)	1760-1 464 (500-1)	1960-1¾ 664 (700-1¾)	2000-2¼ 704 (800-2¼)	2240-3 944 (1000-3)



SC-1, 03 OCT 2024 to 31 OCT 2024

SC-1, 03 OCT 2024 to 31 OCT 2024