

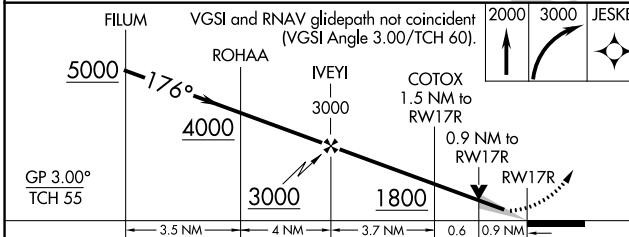
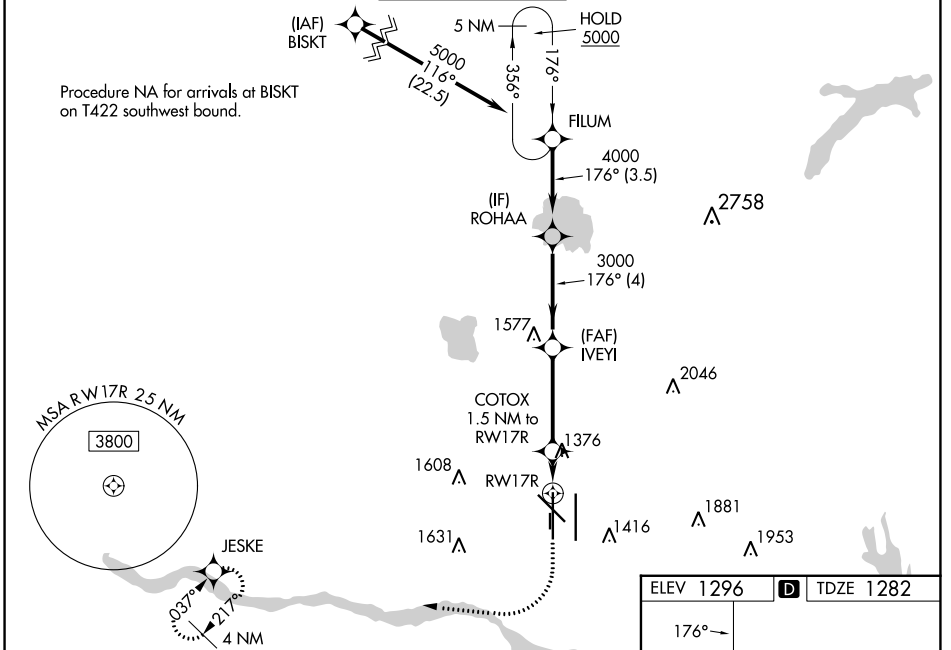
|  |                        |                             |   |
|--|------------------------|-----------------------------|---|
| WAAS<br>CH <b>50102</b><br><b>W17A</b> | APP CRS<br><b>176°</b> | Rwy Idg<br>TDZE<br>Apt Elev | <b>9800</b><br><b>1282</b><br><b>1296</b> |
|--|------------------------|-----------------------------|---|

# RNAV (GPS) Y RWY 17R

WILL ROGERS WORLD (OKC)

|   |  |       |  |
|---|--|-------|--|
| RNP APCH-GPS.   |  | MALSR | MISSED APPROACH:<br>Climb to 2000 then<br>climbing right turn to<br>3000 direct JESKE<br>and hold. |
| <p>Simultaneous approach authorized. LNAV procedure NA during simultaneous operations.<br/>Use of FD or AP required during simultaneous operations. For uncompensated Baro-VNAV systems, LNAV/VNAV NA below -12°C or above 54°C. For inop ALS, increase LNAV/VNAV all Cats visibility to RVR 4500, and LNAV Cats C and D visibility to RVR 5500.<br/>* RVR 1800 authorized with use of FD or AP or HUD to DA.</p> |  | ASR   |  |

|                         |  |   |                               |                           |
|-------------------------|--|---|-------------------------------|---------------------------|
| D-ATIS<br><b>125.85</b> | OKE CITY APP CON<br><b>124.6 266.8</b> | <b>ROGERS TOWER</b><br><b>119.35 269.45</b> | GND CON<br><b>121.9 348.6</b> | CLNC DEL<br><b>124.35</b> |
|-------------------------|--|---|-------------------------------|---------------------------|



|           |          |           |
|-----------|----------|-----------|
| ELEV 1296 | <b>D</b> | TDZE 1282 |
|-----------|----------|-----------|

Navigation Aids: AS, TWR 1436, T1, T2, T3, T4, T5, T6, T7, T8, T9, T10, T11, T12, T13, T14, T15, T16, T17, T18, T19, T20, T21, T22, T23, T24, T25, T26, T27, T28, T29, T30, T31, T32, T33, T34, T35, T36, T37, T38, T39, T40, T41, T42, T43, T44, T45, T46, T47, T48, T49, T50, T51, T52, T53, T54, T55, T56, T57, T58, T59, T60, T61, T62, T63, T64, T65, T66, T67, T68, T69, T70, T71, T72, T73, T74, T75, T76, T77, T78, T79, T80, T81, T82, T83, T84, T85, T86, T87, T88, T89, T90, T91, T92, T93, T94, T95, T96, T97, T98, T99, T100

Runways: REIL Rwy 13 and 31, TDZ/CL Rwy 35R, MIRL Rwy 13-31, HIRL Rwy 17L-35R and 17R-35L

| CATEGORY          | A                     | B                     | C                               | D                       |
|-------------------|-----------------------|-----------------------|---------------------------------|-------------------------|
| LPV DA*           | 1482/24               |                       | 200 (200-½)                     |                         |
| LNAV/VNAV DA      | 1550/24               |                       | 268 (300-½)                     |                         |
| LNAV MDA          | 1640/24               |                       | 1640/30 358 (400-½) 358 (400-¾) |                         |
| <b>C</b> CIRCLING | 1740-1<br>444 (500-1) | 1760-1<br>464 (500-1) | 1960-1¾<br>664 (700-1¾)         | 2000-2¼<br>704 (800-2¼) |

SC-1, 03 OCT 2024 to 31 OCT 2024

SC-1, 03 OCT 2024 to 31 OCT 2024