

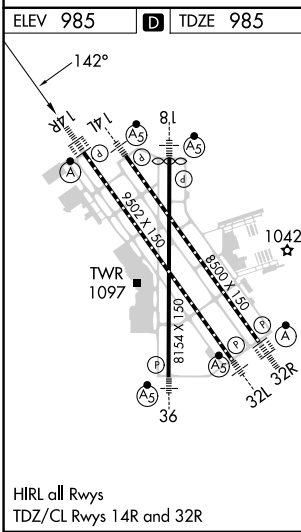
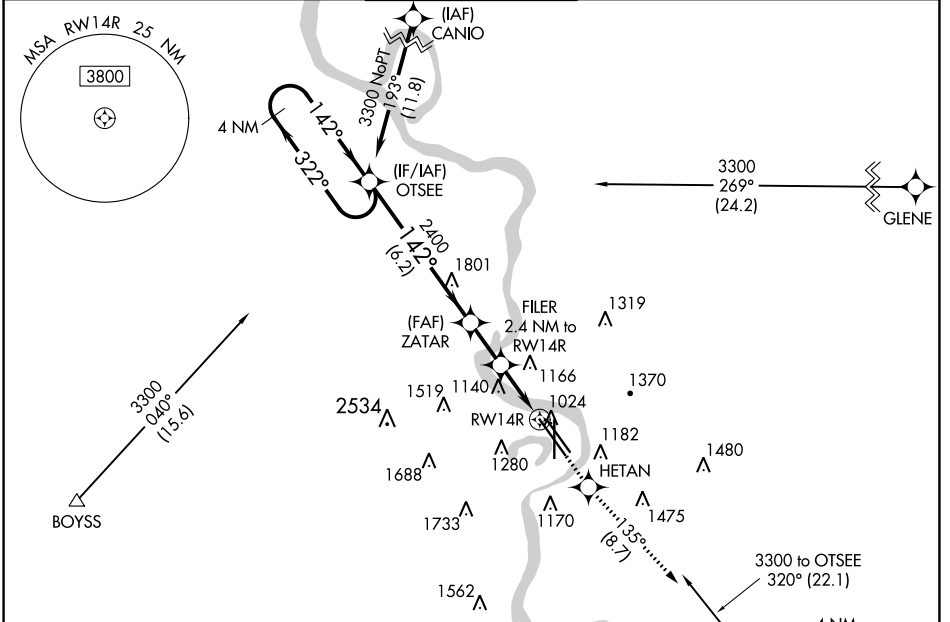
# RNAV (GPS) Y RWY 14R

EPPLEY AIRFIELD (OMA)

WAAS CH <b>56217</b> W <b>14A</b>	APP CRS <b>142°</b>	Rwy Idg TDZE Apt Elev	<b>9502</b> <b>985</b> <b>985</b>
---	------------------------	-----------------------------	---

RNP APCH.	ALSF-2 	MISSED APPROACH: Climb to 3000 direct HETAN and on track 135° to OVR VORTAC and hold.
<p> For uncompensated Baro-VNAV systems, LNAV/VNAV NA below -19°C (-2°F) or above 54°C (130°F). For inop ALS, increase LNAV/VNAV all Cats visibility to 1 3/8 SM.</p>		

D-ATIS <b>120.4</b>	OMAHA APP CON <b>120.1 354.05</b>	OMAHA TOWER <b>132.1 256.9</b>	GND CON <b>121.9</b>	CLNC DEL <b>119.9</b>
------------------------	--------------------------------------	-----------------------------------	-------------------------	--------------------------



	OTSEE	ZATAR	FILER	HETAN	OVR
	4 NM Holding Pattern	2400	2.4 NM to RWY14R	3000	tr 135°
	3300	322°	142°	3000 to OTSEE 320° (22.1)	
	GP 3.00° TCH 57	2400	*1800		
	← 6.2 NM →	← 1.9 NM →	← 1.3 NM →	← 1.1 NM →	
CATEGORY	A	B	C	D	
LPV DA		1185/18	200 (200-1/2)		
LNAV/VNAV DA		1465/50	480 (500-1)		
LNAV MDA	1380/24	395 (400-1/2)	1380/35	395 (400-3/8)	
CIRCLING	1660-1 675 (700-1)	1680-1 695 (700-1)	2000-3 1015 (1100-3)	2040-3 1055 (1100-3)	

NC-2, 03 OCT 2024 to 31 OCT 2024

NC-2, 03 OCT 2024 to 31 OCT 2024