

HI-TACAN RWY 25

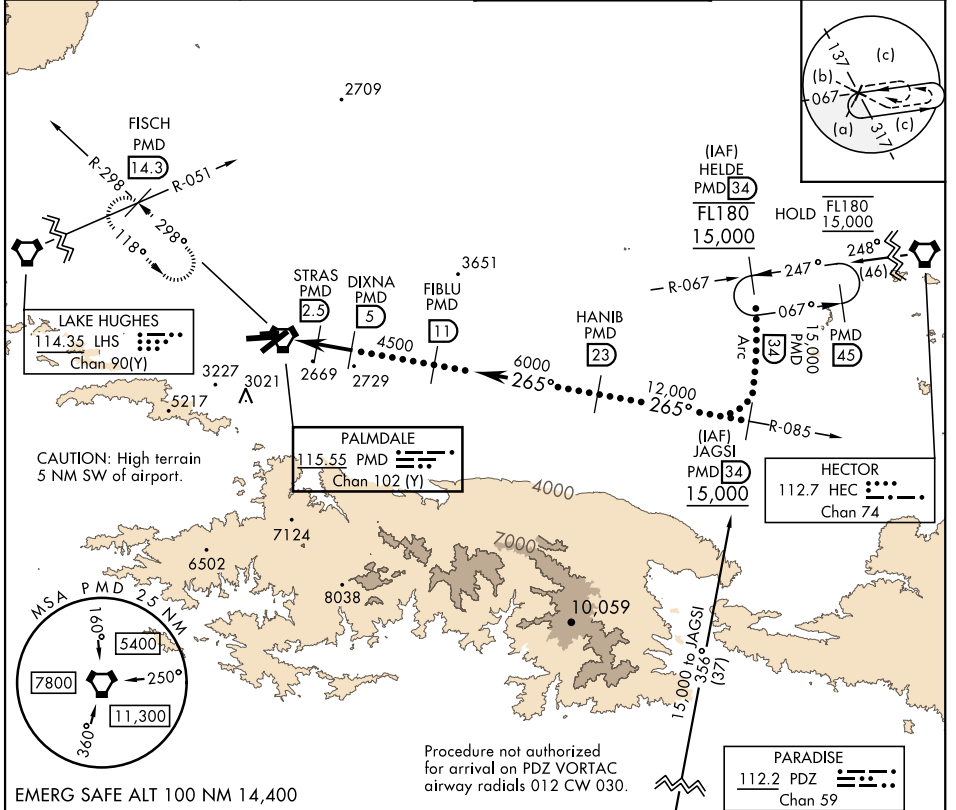
TACAN PMD Chan 102 (Y)	APCH CRS 265°	Rwy Idg TDZE Arprt Elev 12,002 2503 2543
----------------------------------	-------------------------	--

AL-310 [USAF]

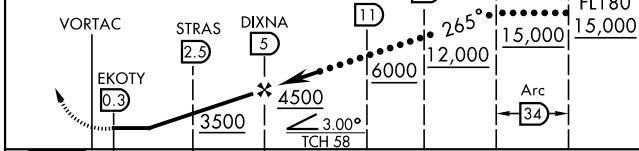
PALMDALE USAF PLANT 42 (KPMD)

▽ * Circling NA S of Rwy 4 and 25.
▲ MISSED APPROACH: Climb to 3000 then climbing right turn to 6700 on heading 318° on PMD VORTAC R-298 to FISCH INT/PMD 14.3 DME/RADAR and hold, continue climb-in-hold to 6700.

ATIS 118.275	JOSHUA APP CON 124.55 363.0	TOWER★ 123.7 (CTAF) 0 317.6	GND CON 121.9 317.6
------------------------	---------------------------------------	---------------------------------------	-------------------------------



3000	6700	VGSI and descent angles not coincident.
↑	Hdg 318°	



CATEGORY	C	D	E
S-25	2840-1	337 (400-1)	
CIRCLING*	3140-1½ 597 (600-1½)	3740-3 1197 (1200-3)	3760-3 1217 (1300-3)

ELEV 2543	TDZE 2503
-----------	-----------

ASSAULT STRIP diagram showing the runway layout, taxiway, and tower location. Key elements include:

- Runway:** 12,002 x 200.
- Taxiway:** 6,000 x 75.
- Obstacles:** TWR 2626, 2640.
- Headings:** 072°, 252°, 265°.
- Gradients:** 0.3% UP, 0.4% UP.

PALMDALE, CALIFORNIA 34° 38'N-118° 05'W PALMDALE USAF PLANT 42 (KPMD)

Amdt 3 15JUN23

HI-TACAN RWY 25

SW-3, 03 OCT 2024 to 31 OCT 2024

SW-3, 03 OCT 2024 to 31 OCT 2024