

PATUXENT RIVER, MARYLAND

# HI-TACAN Y RWY 14

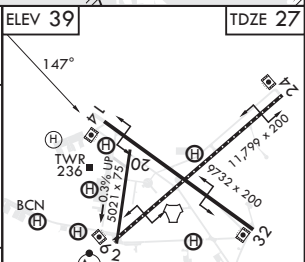
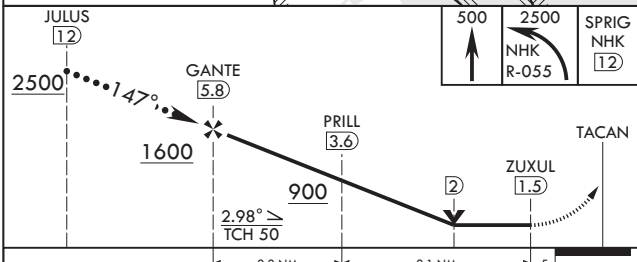
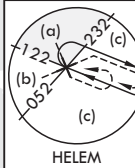
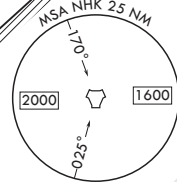
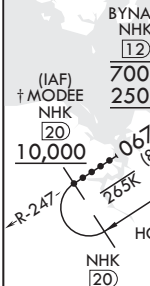
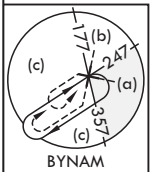
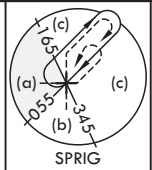
TACAN NHK Chan 39 (Y)	APCH CRS 147°	Rwy ldg TDZE 27 Arprt Elev 39
-----------------------	---------------	----------------------------------

- (USN) PATUXENT RIVER NAS (TRAPNELL FLD) (KNHK)

▽ MISSED APPROACH: Climb to 500, then climbing left turn to 2500 on NHK TACAN R-055 to SPRIG and hold.

ATIS 322.425	APP CON/DEP CON 121.0 250.3	TOWER 123.7 343.65	GND CON 120.6 336.4	CLNC DEL 135.2 316.125	ASR/PAR
--------------	-----------------------------	--------------------	---------------------	------------------------	---------

253 For LOCAL USE ONLY  
 † 10,000 or as assigned  
 †† 12,000 or as assigned  
 ††† 15,000 or as assigned



CATEGORY	C	D	E	HIRL Rwsy 6-24, 14-32 TDZL/CL Rwy 6
S-14	400-1	373	(400-1)	
Ⓢ CIRCLING	620-1½ 581 (600-1½)	680-2 641 (700-2)	800-2¾ 761 (800-2¾)	

PATUXENT RIVER, MARYLAND

38°17'N - 76°25'W PATUXENT RIVER NAS (TRAPNELL FLD) (KNHK)

Orig 02DEC21

# HI-TACAN Y RWY 14

NE-3, 03 OCT 2024 to 31 OCT 2024

NE-3, 03 OCT 2024 to 31 OCT 2024