

PATUXENT RIVER, MARYLAND

# TACAN Z RWY 6

TACAN NHK Chan 39 (Y)	APCH CRS 067°	Rwy ldg TDZE 11,799 39	Arprt Elev 39
-----------------------	---------------	------------------------	---------------

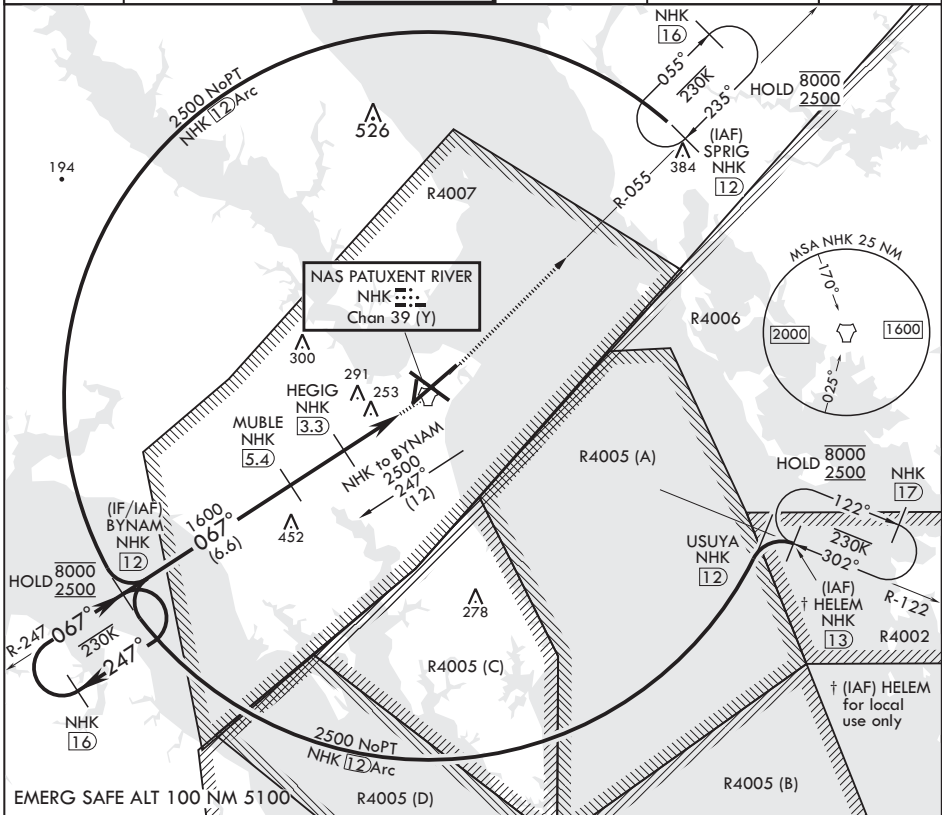
(USN)

PATUXENT RIVER NAS (TRAPNELL FLD) (KNHK)

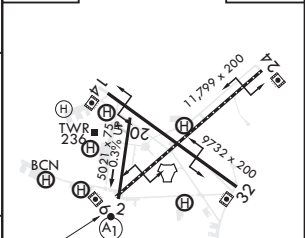
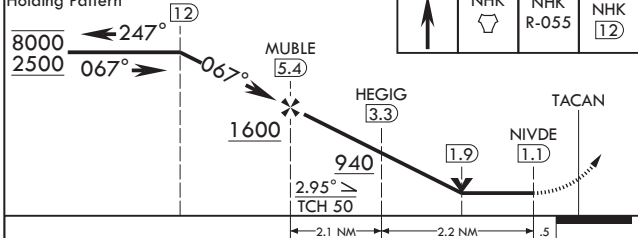
▼ \* When ALS inop, increase CAT AB vis to 1 mile, CAT CD vis to 1 3/8 miles.

ALS-1 MISSED APPROACH: Climb to 2500 direct NHK TACAN and NHK R-055 to SPRIG and hold.

ATIS 322.425	APP CON/DEP CON 121.0 250.3	TOWER 123.7 343.65	GND CON 120.6 336.4	CLNC DEL 135.2 316.125	ASR/PAR
--------------	-----------------------------	--------------------	---------------------	------------------------	---------



4NM Holding Pattern	BYNAM NHK 12	2500	NHK	NHK R-055	SPRIG NHK 12	ELEV 39	TDZE 39
---------------------	--------------	------	-----	-----------	--------------	---------	---------



CATEGORY	A		B		C		D	
S-6*	520-1/2	481	(500-1/2)	520-1	481	(500-1)		
☐ CIRCLING	560-1	521 (600-1)	600-1	561 (600-1)	620-1/2	581 (600-1/2)	680-2	641 (700-2)

HIRL Rwy 6-24, 14-32  
TDZL/CL Rwy 6

PATUXENT RIVER, MARYLAND

38°17'N - 76°25'W PATUXENT RIVER NAS (TRAPNELL FLD) (KNHK)

Orig 02DEC21

# TACAN Z RWY 6

NE-3, 03 OCT 2024 to 31 OCT 2024

NE-3, 03 OCT 2024 to 31 OCT 2024