


LOC/DME I-PNS 111.1 Chan 48	APP CRS 169°	Rwy Idg 7004 TDZE 121 Apt Elev 121
-------------------------------------------------	------------------------	---------------------------------------------------------------

ILS or LOC RWY 17

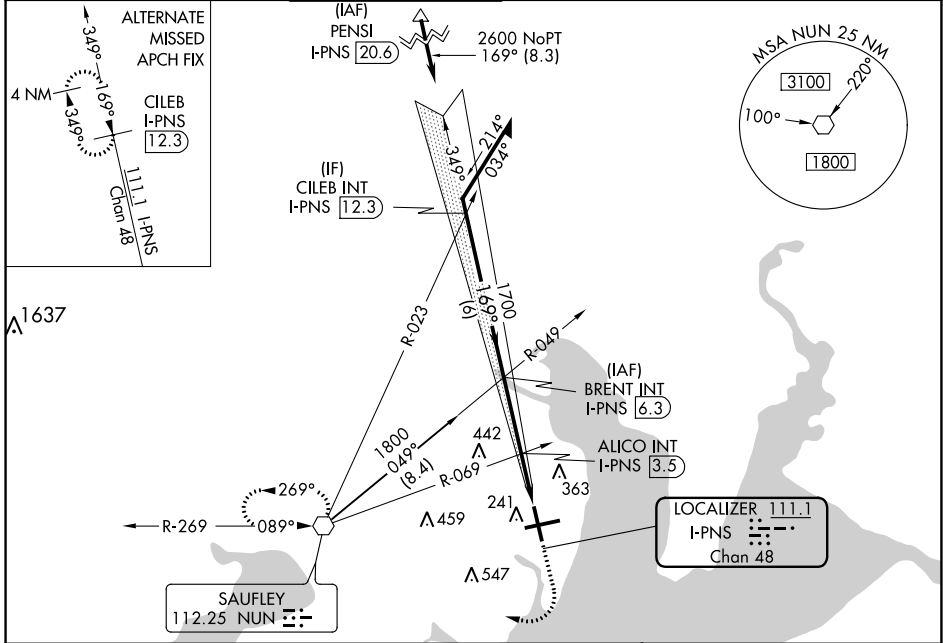
PENSACOLA INTL (PNS)

⚠ For inop ALS, increase S-LOC 17 Cats A/B to RVR 5500 and Cats C/D to 1 1/4 SM. ALICO FIX MINIMUMS: For inop ALS increase S-LOC 17 all Cats visibility to RVR 5500.
CAUTION: Intensive VFR student training in vicinity of airport.

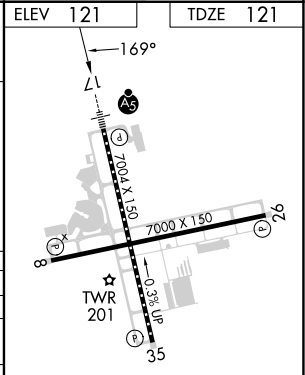
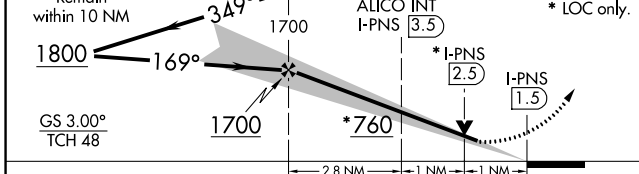
MALSR 

MISSED APPROACH: Climb to 600 then climbing right turn to 3000 direct NUN VOR and hold, continue climb-in-hold to 3000.

ATIS 121.25	PENSACOLA APP CON 119.0 269.375	PENSACOLA TOWER ★ 119.9 (CTAF) 0 257.8	GND CON 121.9 348.6	CLNC DEL 123.725 256.875	UNICOM 122.95
-----------------------	-------------------------------------------	--------------------------------------------------	-------------------------------	------------------------------------	-------------------------



ELEV 121	TDZE 121
-----------------	-----------------



CATEGORY	A	B	C	D
S-ILS 17	321/18 200 (200-1/2)			
S-LOC 17	760/24	639 (700-1/2)	760-13/8	639 (700-13/8)
CIRCLING	760-1	639 (700-1)	860-2 739 (800-2)	860-2 1/4 739 (800-2 1/4)
ALICO FIX MINIMUMS (DUAL VOR RECEIVERS OR DME REQUIRED)				
S-LOC 17	480/24	359 (400-1/2)	480/30	359 (400-5/8)
CIRCLING	580-1 459 (500-1)	680-1 559 (600-1)	860-2 739 (800-2)	860-2 1/4 739 (800-2 1/4)

REIL Rwys 8, 26 and 35
 TDZ/CL Rwy 17
 HIRL Rwys 8-26 and 17-35
 FAF to MAP 4.8 NM

Knots	60	90	120	150	180
Min:Sec	4:48	3:12	2:24	1:55	1:36

SE-3, 03 OCT 2024 to 31 OCT 2024

SE-3, 03 OCT 2024 to 31 OCT 2024