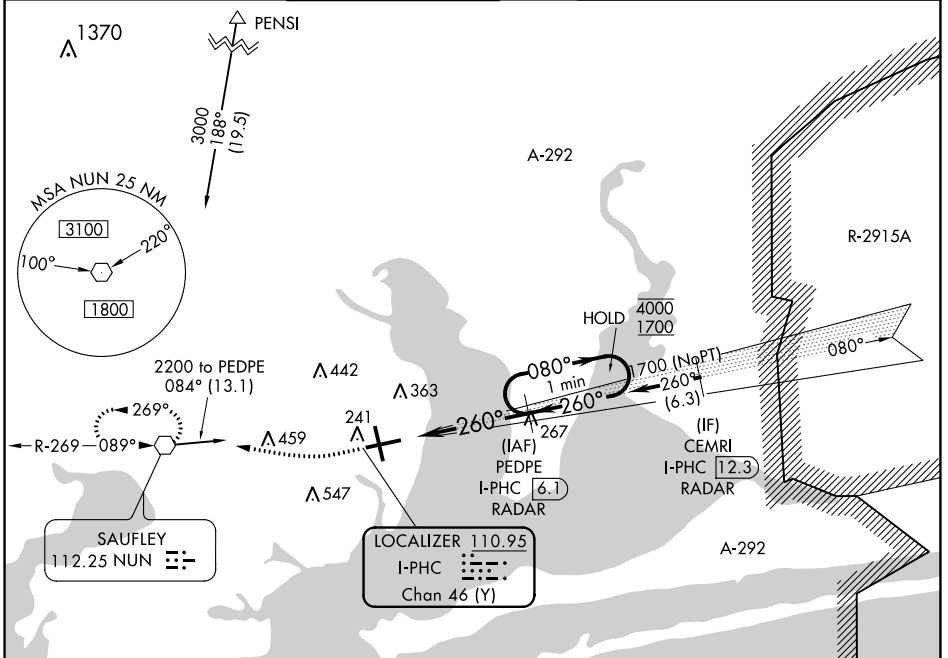


LOC/DME I- PHC	APP CRS	Rwy Idg	7000
110.95	260°	TDZE	113
Chan 46 (Y)		Apt Elev	121

LOC RWY 26

PENSACOLA INTL (PNS)

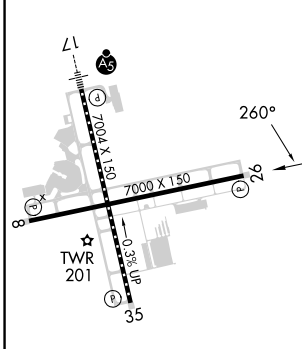
DME or RADAR required.		MISSED APPROACH: Climb to 600 then climbing right turn to 3000 direct NUN VOR and hold, continue climb-in-hold to 3000.				
⚠ Rwy 26 helicopter visibility reduction below 3/4 SM NA.	ATIS 121.25	PENSACOLA APP CON 119.0 269.375	PENSACOLA TOWER ★ 119.9 (CTAF) 257.8	GND CON 121.9 348.6	CLNC DEL 123.725 256.875	UNICOM 122.95



SE-3, 03 OCT 2024 to 31 OCT 2024

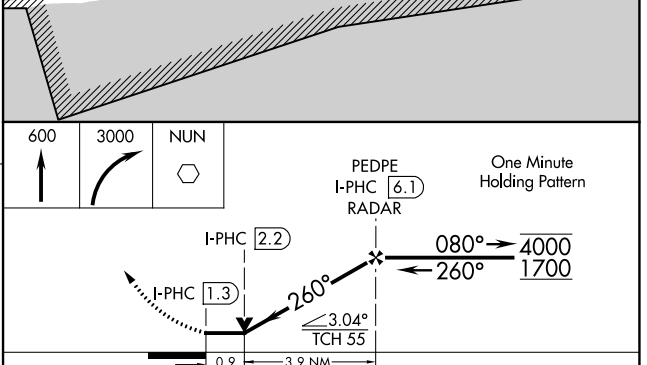
SE-3, 03 OCT 2024 to 31 OCT 2024

ELEV 121	TDZE 113
----------	----------



REIL Rws 8, 26 and 35
 TDZ/CL Rwy 17
 HIRL Rws 8-26 and 17-35
 FAF to MAP 4.7 NM

Knots	60	90	120	150	180
Min:Sec	4:42	3:08	2:21	1:53	1:34



CATEGORY	A	B	C	D
S-26	460-1 347 (400-1)			
CIRCLING	580-1 459 (500-1)	680-1 559 (600-1)	860-2 739 (800-2)	860-2 1/4 739 (800-2 1/4)