

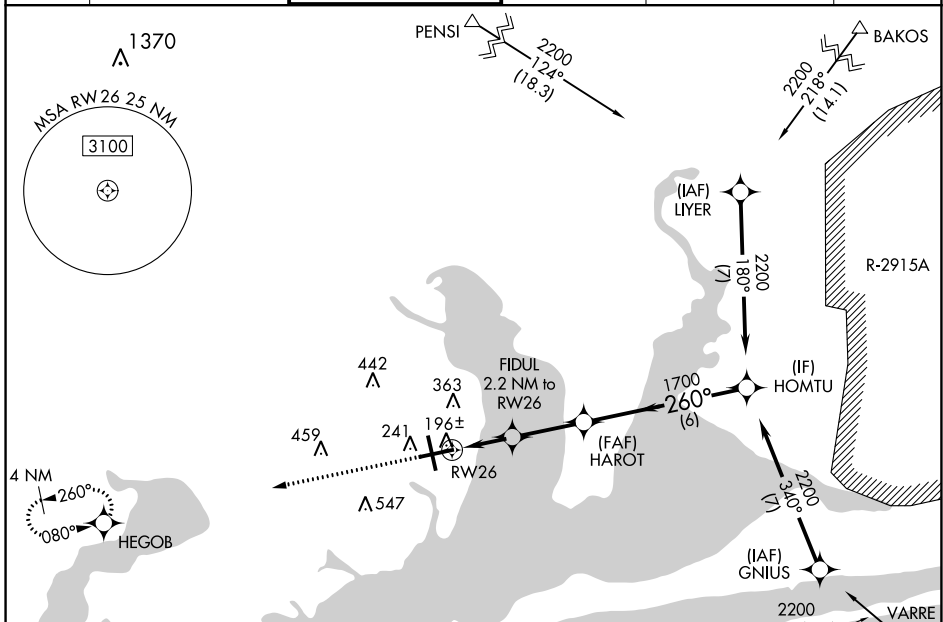
WAAS CH 90119 W26A	APP CRS 260°	Rwy Idg 7000 TDZE 113 Apt Elev 121
--	------------------------	---

RNAV (GPS) RWY 26

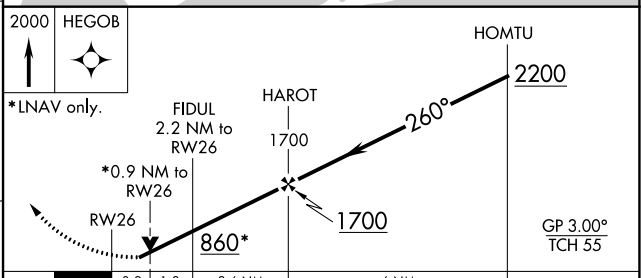
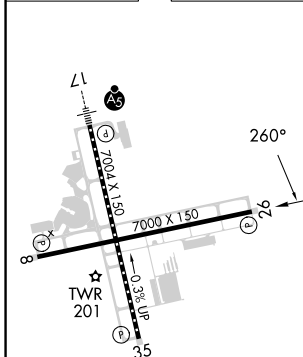
PENSACOLA INTL (PNS)

RNP APCH.	<p>▼ For uncompensated Baro-VNAV systems, LNAV/VNAV NA below 1°C or above 54°C. CAUTION: Intensive VFR student training in vicinity of airport. Rwy 26 helicopter visibility reduction below ¾ SM NA.</p>	MISSED APPROACH: Climb to 2000 direct HEGOB and hold
-----------	---	--

ATIS 121.25	PENSACOLA APP CON 119.0 269.375	PENSACOLA TOWER ★ 119.9 (CTAF) 0 257.8	GND CON 121.9 348.6	CLNC DEL 123.725 256.875	UNICOM 122.95
-----------------------	---	--	-------------------------------	------------------------------------	-------------------------



ELEV 121	TDZE 113
----------	----------



CATEGORY	A	B	C	D
LPV DA		363-¾	250 (300-¾)	
LNAV/VNAV DA		363-¾	250 (300-¾)	
LNAV MDA		460-1	347 (400-1)	
CIRCLING	580-1 459 (500-1)	680-1 559 (600-1)	860-2 739 (800-2)	860-2¼ 739 (800-2¼)

REIL Rws 8, 26 and 35
TDZ/CL Rwy 17
HIRL Rws 8-26 and 17-35

SE-3, 03 OCT 2024 to 31 OCT 2024

SE-3, 03 OCT 2024 to 31 OCT 2024