

NUN VOR 112.25	APP CRS 089°	Rwy ldg 7000 TDZE 97 Apt Elev 121
--------------------------	------------------------	--

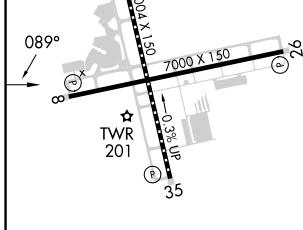
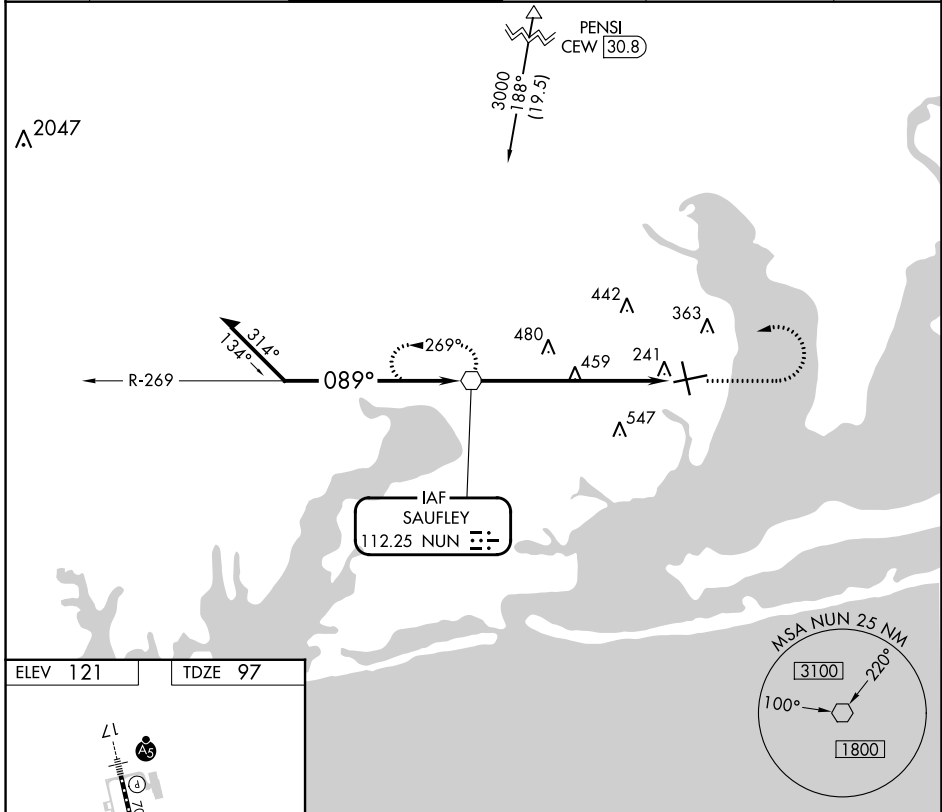
VOR RWY 8

PENSACOLA INTL (PNS)

CAUTION: Intensive student training in vof airport.
Rwy 8 helicopter visibility reduction below 3/4 SM NA.

MISSED APPROACH: Climb to 2000 then climbing left turn to 2600 direct NUN VOR and hold.

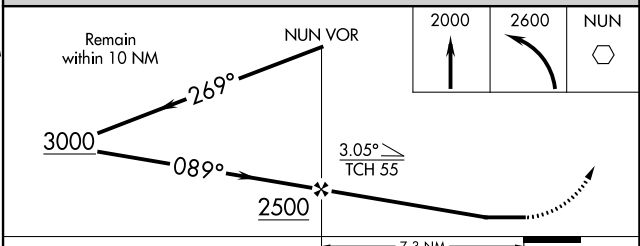
ATIS 121.25	PENSACOLA APP CON 119.0 269.375	PENSACOLA TOWER ★ 119.9 (CTAF) 0 257.8	GND CON 121.9 348.6	CLNC DEL 123.725 256.875	UNICOM 122.95
-----------------------	---	--	-------------------------------	------------------------------------	-------------------------



REIL Rwy 8, 26 and 35
TDZ/CL Rwy 17
HIRL Rwy 8-26 and 17-35

FAF to MAP 7.3 NM

Knots	60	90	120	150	180
Min:Sec	7:18	4:52	3:39	2:55	2:26



CATEGORY	A	B	C	D
S-8	800-1	703 (700-1)	800-2	703 (700-2)
CIRCLING	800-1	679 (700-1)	860-2 739 (800-2)	860-2 1/4 739 (800-2 1/4)

SE-3, 03 OCT 2024 to 31 OCT 2024

SE-3, 03 OCT 2024 to 31 OCT 2024