

BLYTHE FIVE ARRIVAL

AL-322 (FAA)

PHOENIX, ARIZONA

SW-4, 03 OCT 2024 to 31 OCT 2024

ARRIVAL ROUTE DESCRIPTION

BLYTHE TRANSITION (BLH.BLH5): From over BLH VORTAC on BLH R-082 to SALOM, then on GBN R-285 and IWA R-256 to ARLIN. Thence

PHOENIX SKY HARBOR INTL: Rwy 7L/R or 8: From over ARLIN, expect vectors to final approach course; Rwy 25L/R or 26: From over ARLIN, on IWA R-256 to TUKEE. Expect vectors to final approach course prior to TUKEE.
SATELLITE AIRPORTS: Expect vectors after passing SALOM.

LOST COMMUNICATIONS: After ARLIN, on IWA R-256 and PXR R-143 to PXR VORTAC.

SALOM

VERTICAL NAVIGATION PLANNING INFORMATION

Turboprop expect 17000
Turboprop landing KPHX expect vectors after SALOM.

BLYTHE
117.4 BLH
Chan 121

BUCKEYE
110.6 BKK
Chan 43

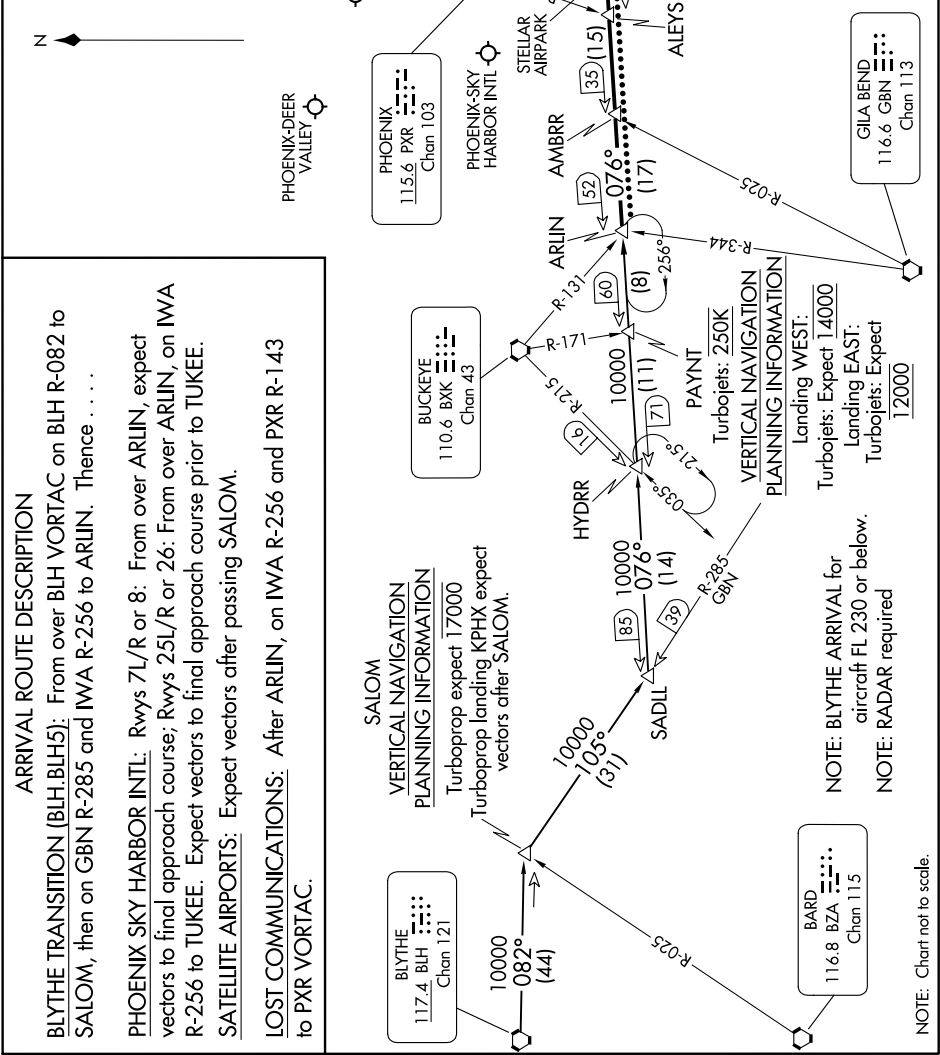
PHOENIX
115.6 PXR
Chan 103

BARD
116.8 BZA
Chan 115

NOTE: BLYTHE ARRIVAL for aircraft FL 230 or below.
NOTE: RADAR required

VERTICAL NAVIGATION PLANNING INFORMATION
Landing WEST:
Turbopjets: Expect 14000
Landing EAST:
Turbopjets: Expect 12000

- PHOENIX APP CON 124.1 256.9
- PHOENIX TOWER 118.7 278.8 (Rwy 8-26)
- 120.9 254.3 (Rwy 7L-25R, 7R-25L)
- PHOENIX GND CON 119.75 269.2
- CHD ATIS 128.325
- FFZ ATIS 118.25
- DVT ATIS 126.5
- IWA ATIS 133.5 270.275
- PHX D-ATIS 127.575
- SDL ATIS 118.6



NOTE: Chart not to scale.

SW-4, 03 OCT 2024 to 31 OCT 2024

BLYTHE FIVE ARRIVAL

PHOENIX, ARIZONA