

# PLAINS ONE DEPARTURE

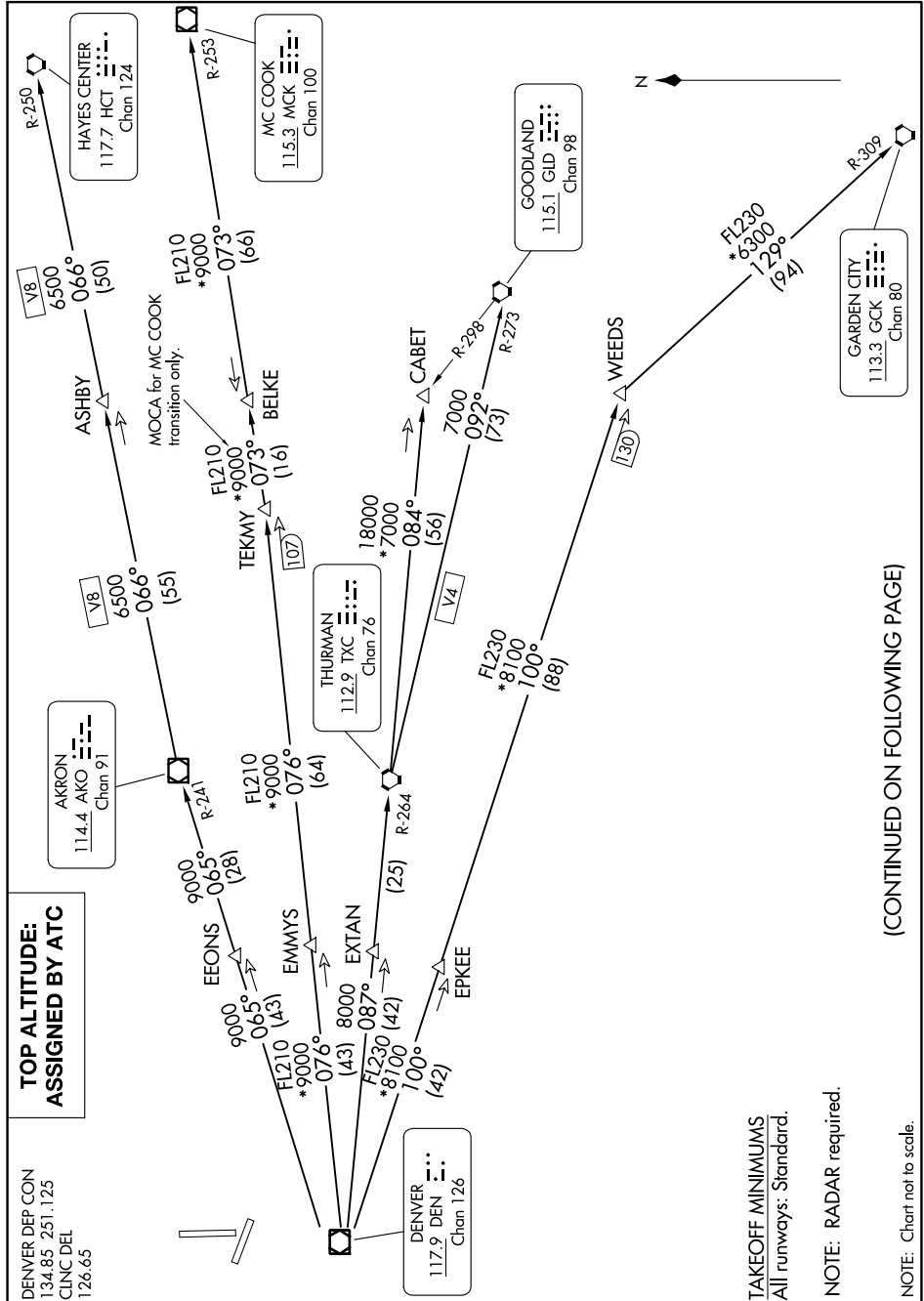
AL-325 (FAA)

GREELEY-WELD COUNTY (GXXY)  
GREELEY, COLORADO

SW-1, 03 OCT 2024 to 31 OCT 2024

## TOP ALTITUDE: ASSIGNED BY ATC

DENVER DEP CON  
134.85 251.125  
CLNC DEL  
126.65



TAKEOFF MINIMUMS  
All runways: Standard.

NOTE: RADAR required.

NOTE: Chart not to scale.

(CONTINUED ON FOLLOWING PAGE)

# PLAINS ONE DEPARTURE

SW-1, 03 OCT 2024 to 31 OCT 2024