

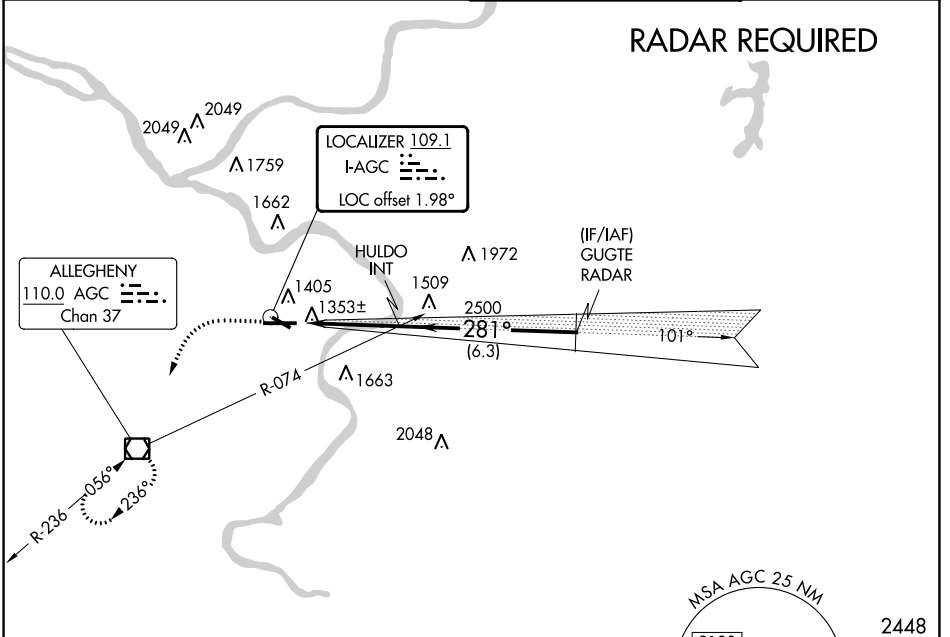
LOC I-AGC 109.1	APP CRS 281°	Rwy ldg TDZE Apt Elev	6501 1251 1252
---------------------------	------------------------	-----------------------------	---

ILS or LOC RWY 28

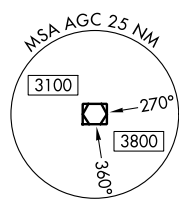
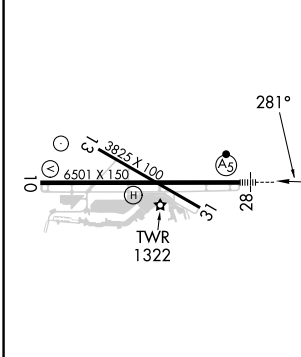
ALLEGHENY COUNTY (AGC)

<p>For inoperative MALSR, increase S-LOC Cats C and D visibility to RVR 6000. Circling Rwy 13 NA at night.</p>	<p>MALSR</p>	<p>MISSED APPROACH: Climb to 2000 then climbing left turn to 3000 direct AGC VOR/DME and hold, continue climb-in-hold to 3000.</p>	

ATIS 120.55	PITTSBURGH APP CON 119.35 285.575	ALLEGHENY TOWER 121.1 239.0	GND CON 121.7
-----------------------	---	---------------------------------------	-------------------------



ELEV 1252	TDZE 1251
-----------	-----------



2448

REIL Rws 10, 13, and 31 HIRL Rws 10-28 and 13-31	GUGTE RADAR			
FAF to MAP 3.8 NM	HULDO INT			
Knots 60 90 120 150 180	2500			
Min:Sec 3:48 2:32 1:54 1:31 1:16	281°			
<input checked="" type="checkbox"/> CIRCLING	3.8 NM	6.3 NM	3000	
	GS 3.00° TCH 51			
CATEGORY	A	B	C	D
S-ILS 28	1501/24 250 (300-½)			
S-LOC 28	1660/24	409 (500-½)	1660/40	409 (500-¾)
<input checked="" type="checkbox"/> CIRCLING	1720-1 468 (500-1)		1980-2 728 (800-2)	1980-2¼ 728 (800-2¼)

NE-4, 03 OCT 2024 to 31 OCT 2024

NE-4, 03 OCT 2024 to 31 OCT 2024