

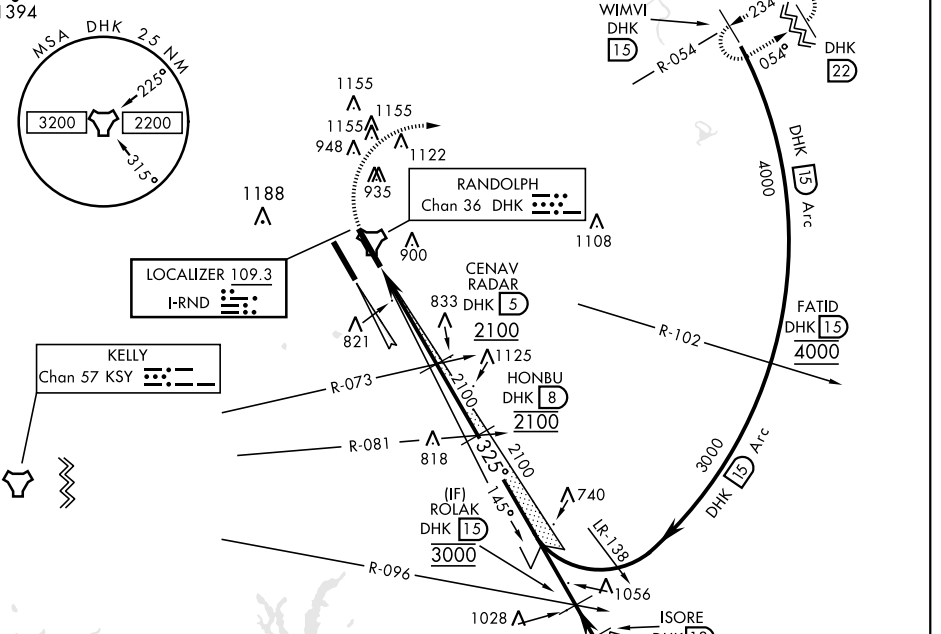
# ILS or LOC Y RWY 33R

LOC I-RND <b>109.3</b>	APCH CRS <b>325°</b>	Rwy ldg TDZE Arprt Elev <b>8351</b> <b>733</b> <b>761</b>	[USAF]	RANDOLPH AFB (KRND)
---------------------------	-------------------------	--	--------	---------------------

RADAR or DME required		ALSF-1 <b>A1</b>	MISSED APPROACH: Climb to 1500, then climbing right turn hdg 084° to 3000. Intercept DHK R-054 to WIMVI and hold.
* When ALS inop, increase RVR to 40 and vis to ¼ mile. ** When ALS inop, increase CAT AB RVR to 55, vis to 1 mile; CAT CDE vis to 1½ miles. *** Circling not authorized SW of Rwy 15L-33R.			

ATIS ★ <b>290.525</b>	SAN ANTONIO APP CON <b>128.05 318.1</b>	TOWER ★ <b>128.25 294.7</b>	GND CON <b>119.65 275.8</b>	CLNC DEL (RWY 15L-33R) <b>338.35</b>	HANGOVER ATIS ★ <b>327.8</b>	HANGOVER TOWER ★ <b>120.5 291.1</b>	HANGOVER GND CON <b>124.75 353.75</b>
--------------------------	--	--------------------------------	--------------------------------	---	---------------------------------	--	--

Simultaneous approaches authorized with Rwy 33R and 33L.



EMERG SAFE ALT 100 NM 4100

ELEV 761	TDZE 733							
		1500	3000	DHK R-054	WIMVI DHK 15	CENAV DHK 5	HONBU DHK 8	ROLAK DHK 15
				DHK 2.2	RADAR 2100	325° 3000 GP 3.00° TCH 53		
				FOLAV DHK 1.4	VGS1 and ILS glidepath not coincident (VGS1 Angle 3.00/TCH 42).			

HIRL all rwys ALS Rwy 15L nstd len 2100'	821					
FAF to MAP 3.6 NM						
Knots	60	90	120	150	180	
Min:Sec	3:36	2:24	1:48	1:26	1:12	
<b>CIRCLING</b> ***	1240-1	479 (500-1)	1260-1½ 499 (500-1½)	1800-3	1039 (1100-3)	

# ILS or LOC Y RWY 33R

SC-3, 03 OCT 2024 to 31 OCT 2024

SC-3, 03 OCT 2024 to 31 OCT 2024