

UNIVERSAL CITY, TEXAS

# RNAV (GPS) RWY 15L

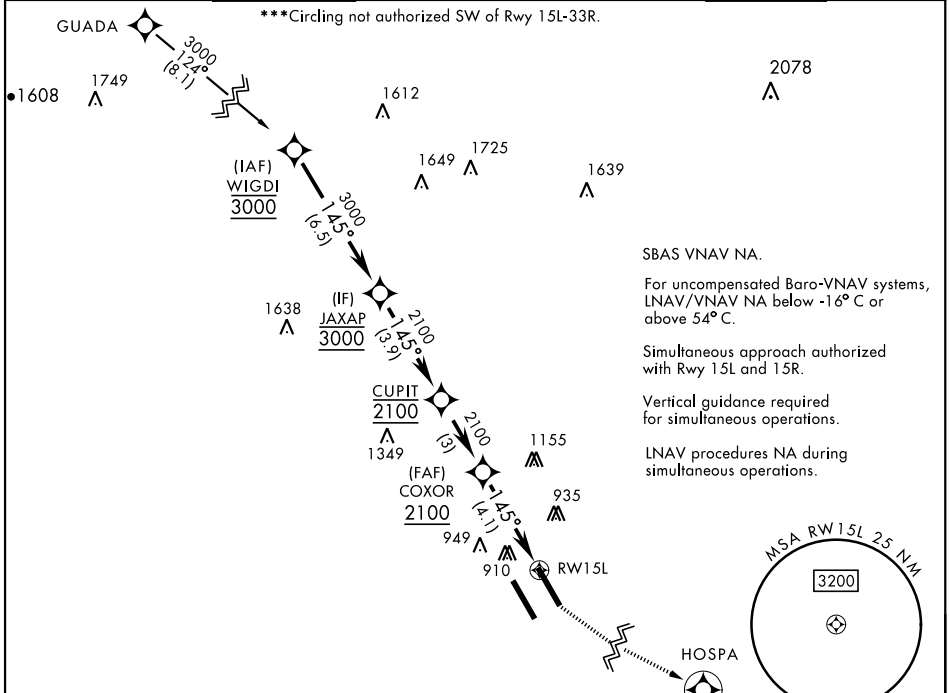
APCH CRS	Rwy Idg	<b>8351</b>
<b>145°</b>	TDZE	<b>742</b>
	Arpt Elev	<b>761</b>

[USAF]

RANDOLPH AFB (KRND)

RNP APCH - GPS		ALSF-1 	MISSED APPROACH: Climb to 1500, then climbing left turn to 3000 direct HOSPA. Expect ATC instructions.
*When ALS inop, increase CAT ABC RVR to 45, vis to 7/8 mile, CAT DE RVR to 50, vis to 1 mile. **When ALS inop, increase CAT AB RVR to 55, vis to 1 mile; CAT CDE vis to 1 1/8 miles.			

ATIS ★	SAN ANTONIO APP CON	TOWER ★	GND CON	CLNC DEL (RWY 15L-33R)	HANGOVER ATIS ★	HANGOVER TOWER ★	HANGOVER GND CON
<b>290.525</b>	<b>128.05 318.1</b>	<b>128.25 294.7</b>	<b>119.65 275.8</b>	<b>338.35</b>	<b>327.8</b>	<b>120.5 291.1</b>	<b>124.75 353.75</b>



EMERG SAFE ALT 100 NM 4100

					ELEV 761	TDZE 742
CATEGORY	A	B	C	D	E	
LNAV/VNAV DA *	1043/40 301 (300-3/4)	1054/40 312 (300-3/4)	1062/40 320 (400-3/4)	1073/40 331 (400-3/4)		
LNAV MDA **	1260/40 518 (500-3/4)		1260-1 1/4 499 (500-1 1/2)	518	(500-1 1/4)	
CIRCLING ***	1260-1	499 (500-1)	1260-1 1/2 499 (500-1 1/2)	1800-3	1039 (1100-3)	
						HIRL all rwys ALS Rwy 15L nstd len 2100'

UNIVERSAL CITY, TEXAS

29°32'N-98°17'W

RANDOLPH AFB (KRND)

Amtd 4 28DEC23

# RNAV (GPS) RWY 15L

SC-3, 03 OCT 2024 to 31 OCT 2024

SC-3, 03 OCT 2024 to 31 OCT 2024