

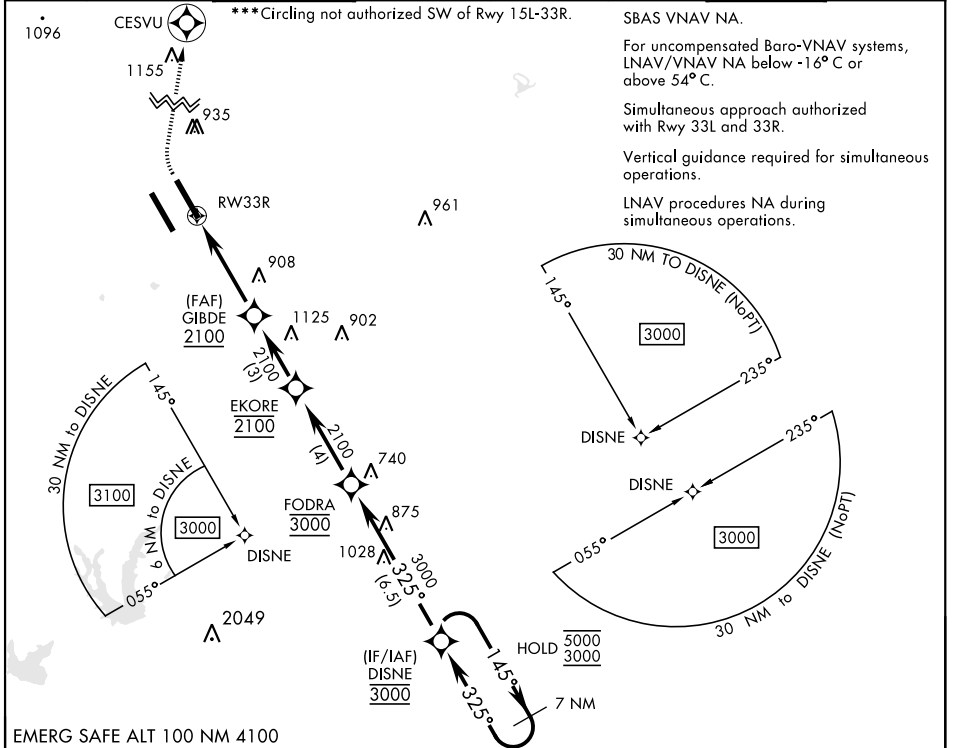
RNAV (GPS) RWY 33R

APCH CRS 325°	Rwy Idg TDZE Arprt Elev	8351 733 761
-------------------------	-------------------------------	-----------------------------------------

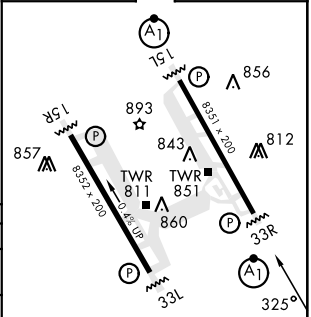
[USAF]

RANDOLPH AFB (KRND)

RNP APCH - GPS		*When ALS inop, increase CAT ABCD RVR to 40, vis to 3/8 mile; CAT E RVR to 45, vis to 7/8 mile; ** When ALS inop, increase CAT AB RVR to 55 and vis to 1 mile; CAT CDE vis to 1 3/8 miles.		ALSF-1 	MISSED APPROACH: Climb to 1500 then climbing right turn to 3000 direct CESVU. Expect ATC instructions.		
ATIS ★ 290.525	SAN ANTONIO APP CON 128.05 318.1	TOWER ★ 128.25 294.7	GND CON 119.65 275.8	CLNC DEL (RWY 15L-33R) 338.35	HANGOVER ATIS ★ 327.8	HANGOVER TOWER ★ 120.5 291.1	HANGOVER GND CON 124.75 353.75



EMERG SAFE ALT 100 NM 4100		ELEV 761		TDZE 733	
1500	3000	CESVU	VGSi and RNAV glidepath not coincident (VGSi Angle 3.00/TCH 42).		
7 NM Holding Pattern					
RW33R		GIBDE	EKORE	FODRA	DISNE
1.4 NM to RW33R		2100	2100	3000	5000/3000
4.2 NM		GP 3.00° TCH 53			
CATEGORY	A	B	C	D	E
LNAV/VNAV DA*	983/24 250 (300-1/2)		987/24 254 (300-1/2)		1025/24 292 (300-1/2)
LNAV MDA**	1200/24 467 (500-1/2)		1200/50 467 (500-1)		
CIRCLING***	1240-1 479 (500-1)		1260-1 1/2 499 (500-1 1/2)		1800-3 1039 (1100-3)
HRL all rwys		ALS Rwy 15L nstd len 2100'			



SC-3, 03 OCT 2024 to 31 OCT 2024

SC-3, 03 OCT 2024 to 31 OCT 2024

RNAV (GPS) RWY 33R