

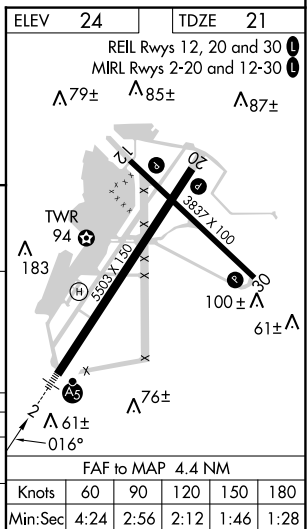
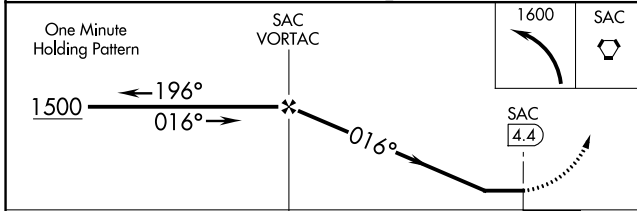
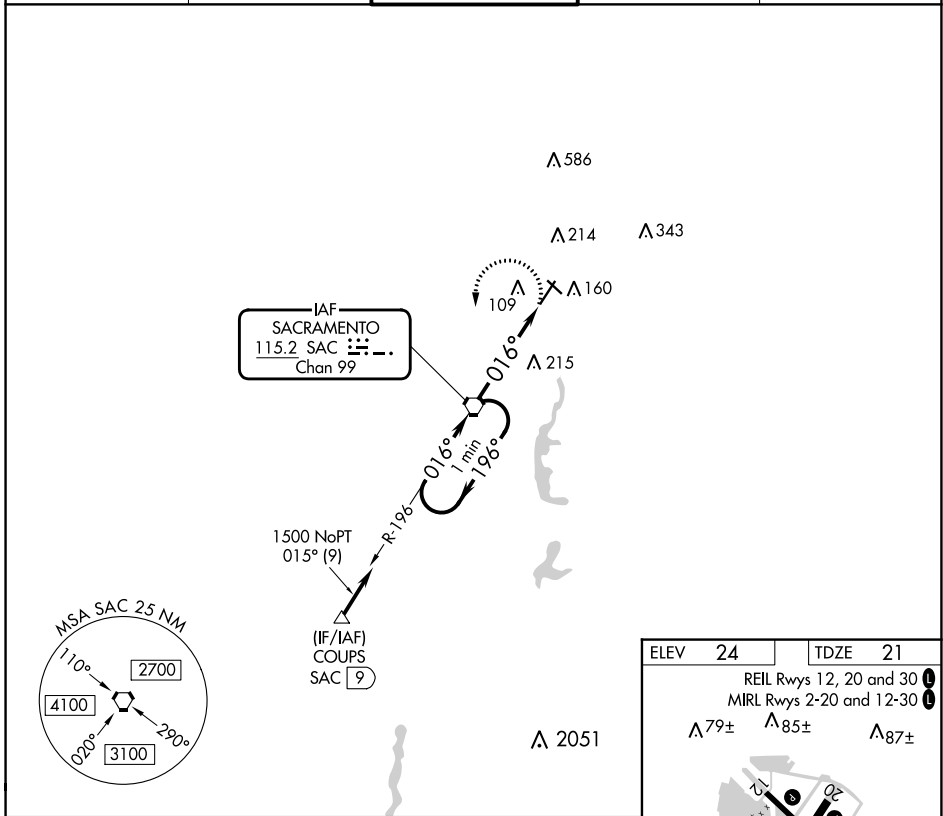
VORTAC SAC <b>115.2</b> Chan <b>99</b>	APP CRS <b>016°</b>	Rwy Idg <b>5503</b> TDZE <b>21</b> Apt Elev <b>24</b>
--	------------------------	---

# VOR RWY 2

SACRAMENTO EXEC (SAC)

<p>When local altimeter setting not received, use Sacramento Intl altimeter setting and increase all MDAs 40 feet and Circling Cat D visibility ¼ SM.</p>	MALSR	<p>MISSED APPROACH: Climbing left turn to 1600 direct SAC VORTAC and hold.</p>

ATIS <b>125.5</b>	NORCAL APP CON <b>125.25 257.9</b>	EXEC TOWER* <b>119.5 (CTAF) 0 278.8</b>	GND CON <b>125.0</b>	UNICOM <b>122.95</b>
----------------------	---------------------------------------	--	-------------------------	-------------------------



CATEGORY	A	B	C	D
S-2	520-1/2	499 (500-1/2)	520-1	499 (500-1)
CIRCLING	520-1	496 (500-1)	560-1/2 536 (600-1/2)	800-2/2 776 (800-2/2)

SW-2, 03 OCT 2024 to 31 OCT 2024

SW-2, 03 OCT 2024 to 31 OCT 2024