

LOC/DME I-OGZ 111.95 Chan 56(Y)	APP CRS 123°	Rwy ldg TDZE Apt Elev	9000 618 618
--	------------------------	-----------------------------	---

ILS or LOC RWY 11

ST LOUIS LAMBERT INTL (STL)

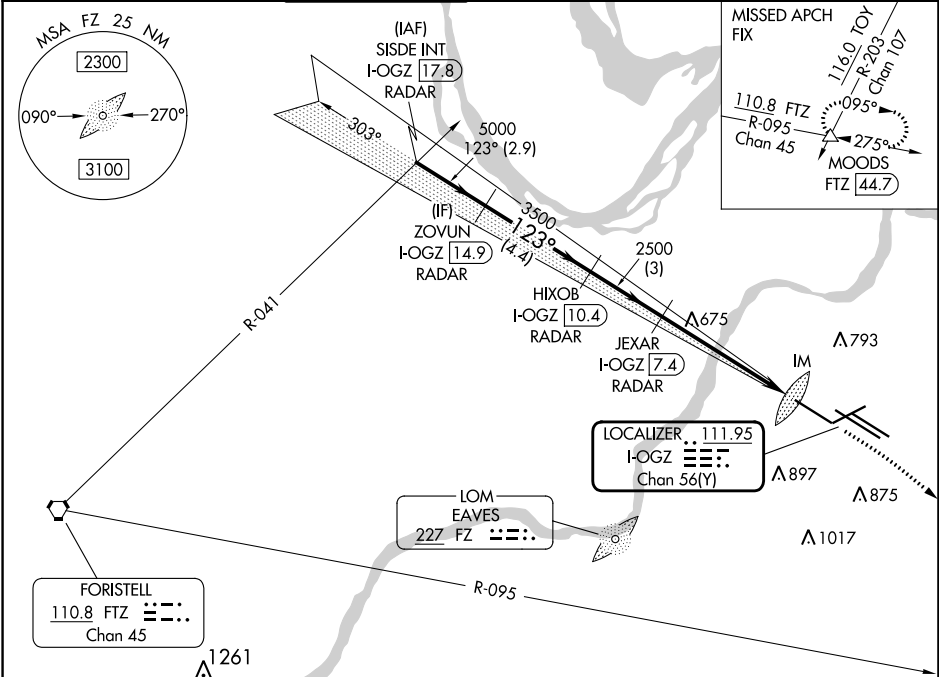
RADAR required for procedure entry. DME or RADAR required.

Simultaneous approach authorized with Rwy 12R/L. Disregard OM signal associated with ILS to Rwy 12R. For inop ALS, increase S-ILS Cat E visibility to RVR 4000, and S-LOC Cat C/D/E visibility to RVR 5500.



MISSED APPROACH: Climb to 1060 then climbing right turn to 3000 on heading 130° and FTZ R-095 to MOODS INT/FTZ 44.7 DME and hold.

D-ATIS 125.025 379.925	ST. LOUIS APP CON 132.125 360.6	ST. LOUIS TOWER 132.475 239.275	GND CON 121.9 348.6 (Inbound) 121.65 377.175 (Outbound) 118.925 227.125 (Rwy 11/29)	CLNC DEL 119.5 363.1	CPDLC
--	---	---	---	--------------------------------	-------



NC-3, 03 OCT 2024 to 31 OCT 2024

NC-3, 03 OCT 2024 to 31 OCT 2024

VGSIs and ILS glidepath not coincident (VGS Angle 3.00/TCH 67).					
SISDE INT I-OGZ 17.8		ZOVUN I-OGZ 14.9		HIXOB I-OGZ 10.4	JEXAR I-OGZ 7.4
5000		5000		3500	2500
GS 3.00° TCH 55		123°		130°	123°
2.9 NM		4.4 NM		3 NM	4.6 NM
CATEGORY		A		B	C
S-ILS 11		818/18		200 (200-½)	
S-LOC 11		980/24		362 (400-½)	980/35 362 (400-¾)

ELEV 618 TDZE 618

Rwy 6-24 7603 X 150
Rwy 11-29 9000 X 150
Rwy 12L-30R 9013 X 150
Rwy 12R-30L 11020 X 150

Diagram of RWY 11 approach showing various markers and altitudes:

- 123° heading
- 0.6 NM, 0.2 NM, 0.1 NM distances
- Altitudes: 1060, 3000, 2500, 1060, 3000, 1261, 675, 897, 875, 1017
- Markers: A5, A4, A3, A2, A1, TW, TWR 774

HIRL all Rwy's
TDZ/CL Rwy's 11, 12L, 12R, 29, and 30R
FAF to MAP 5.6 NM

Knots	60	90	120	150	180
Min:Sec	5:36	3:44	2:48	2:14	1:52