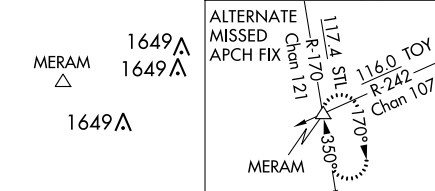
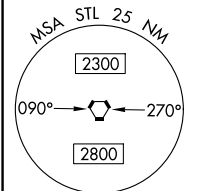
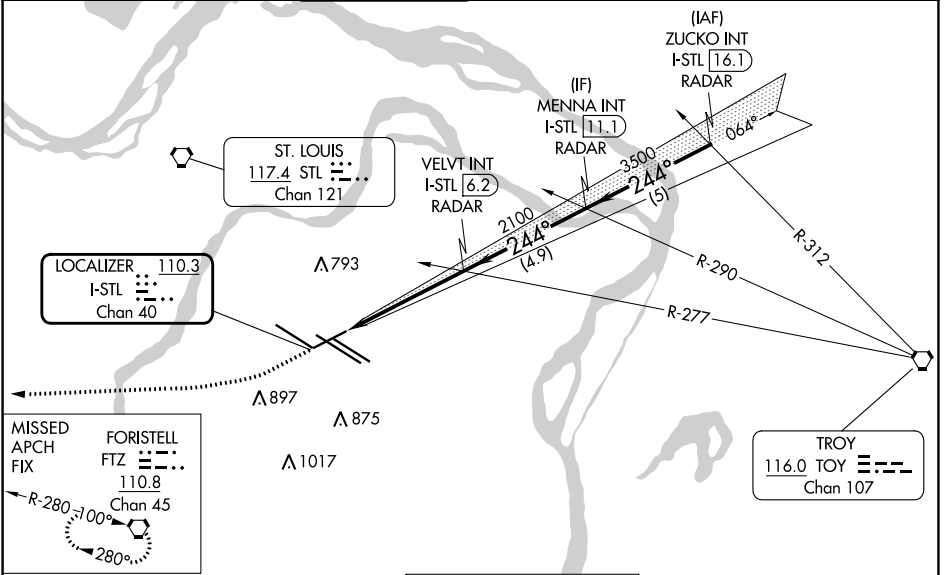


LOC/DME I-STL <b>110.3</b> Chan 40	APP CRS <b>244°</b>	Rwy Idg TDZE <b>7603</b> <b>534</b> Apt Elev <b>618</b>
--	------------------------	---

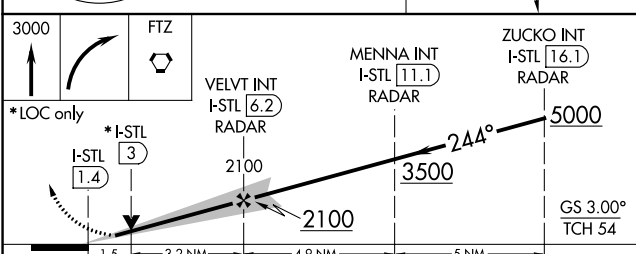
# ILS or LOC RWY 24

ST LOUIS LAMBERT INTL (STL)

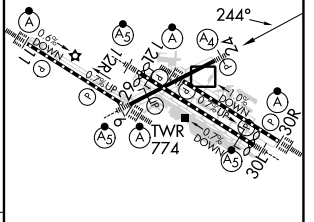
RADAR required for procedure entry.		MALS 	MISSED APPROACH: Climb to 3000 then right turn direct FTZ VORTAC and hold.		
<p>▼ Inop table does not apply to S-ILS 24. For inop ALS, increase S-LOC 24 Cat E visibility to 1<math>\frac{1}{2}</math> SM.</p>		<p>GND CON <b>121.9 348.6</b> (Inbound) <b>121.65 377.175</b> (Outbound) <b>118.925 227.125</b> (Rwy 11/29)</p>			CLNC DEL <b>119.5 363.1</b>
D-ATIS <b>125.025</b> <b>379.925</b>	ST. LOUIS APP CON <b>132.125 360.6</b>	ST. LOUIS TOWER <b>120.05 284.6</b>	CPDLC		



ELEV 618	TDZE 534
----------	----------



Rwy 6-24 7603 X 150
Rwy 11-29 9000 X 150
Rwy 12L-30R 9013 X 150
Rwy 12R-30L 11020 X 150



CATEGORY	A	B	C	D	E
S-ILS 24	734/40 200 (200- $\frac{3}{4}$ )				
S-LOC 24	1080/40	546 (500- $\frac{3}{4}$ )	1080-1 $\frac{3}{8}$	546 (500-1 $\frac{1}{8}$ )	

HIRL all Rwys					
TDZ/CL Rwys 11, 12L, 12R, 29, and 30R					
FAF to MAP 4.8 NM					
Knots	60	90	120	150	180
Min:Sec	4:48	3:12	2:24	1:55	1:36

NC-3, 03 OCT 2024 to 31 OCT 2024

NC-3, 03 OCT 2024 to 31 OCT 2024