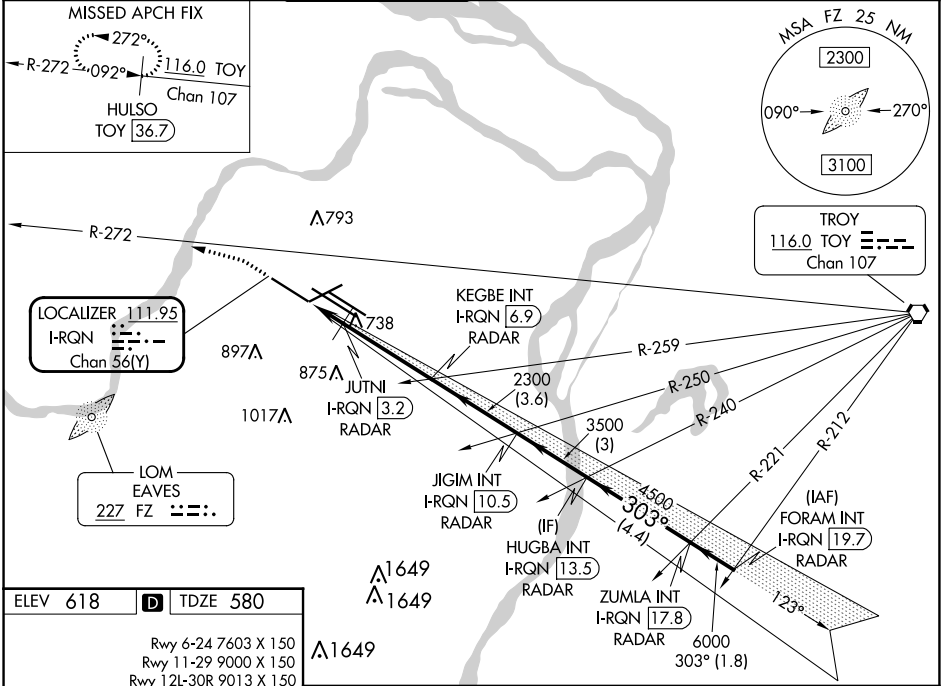


LOC/DME I-RQN <b>111.95</b> Chan <b>56(Y)</b>	APP CRS <b>303°</b>	Rwy Idg TDZE Apt Elev <b>9000</b> <b>580</b> <b>618</b>
---	------------------------	--

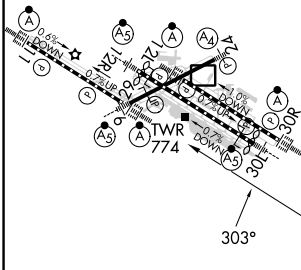
# ILS or LOC RWY 29

ST LOUIS LAMBERT INTL (STL)

RADAR required for procedure entry. DME or RADAR required.			ALSIF-2 	MISSED APPROACH: Climb to 1040 then climbing left turn to 3000 on heading 286° and on TOY VORTAC R-272 to HULSO/TOY 36.7 DME and hold.	
<p>Simultaneous approach authorized with Rwy 30R/L. Autopilot coupled approach NA. Rwy 29 helicopter visibility reduction below RVR 4000 NA. For inop ALS, increase S-ILS Cat E visibility to RVR 4000, increase S-LOC Cats A/B visibility to RVR 5500, and Cat C/D/E to RVR 6000.</p>					
D-ATIS <b>125.025</b> <b>379.925</b>	ST. LOUIS APP CON <b>132.125 360.6</b>	ST. LOUIS TOWER <b>132.475 239.275</b>	GND CON <b>121.9 348.6</b> (Inbound) <b>121.65 377.175</b> (Outbound) <b>118.925 227.125</b> (Rwy 11/29)		CLNC DEL <b>119.5 363.1</b>



ELEV 618	<b>D</b>	TDZE 580
Rwy 6-24 7603 X 150 Rwy 11-29 9000 X 150 Rwy 12L-30R 9013 X 150 Rwy 12R-30L 11020 X 150		



1040	3000	TOY R-272	HULSO TOY 36.7	VGSI and ILS glidepath not coincident (VGSI Angle 3.00/ TCH 73).			
Disregard OM indications. * LOC only		JUTNI I-RQN 3.2	KEGBE I-RQN 6.9	JIGIM I-RQN 10.5	HUGBA I-RQN 13.5	ZUMLA I-RQN 17.8	FORAM I-RQN 19.7
303°-6000		303°-6000		303°-6000		303°-6000	
1100*		2300		4500		6000	
1.5 NM		3.7 NM		3 NM		1.8 NM	
CATEGORY	A	B	C	D	E		
S-ILS 29	780/18		200 (200-½)				
S-LOC 29	980/40		400 (400-¾)				

NC-3, 03 OCT 2024 to 31 OCT 2024

NC-3, 03 OCT 2024 to 31 OCT 2024