

LOC I-BKY <b>111.5</b>	APP CRS <b>303°</b>	Rwy ldg <b>10679</b> TDZE <b>583</b> Apt Elev <b>618</b>
---------------------------	------------------------	--

# ILS or LOC RWY 30L

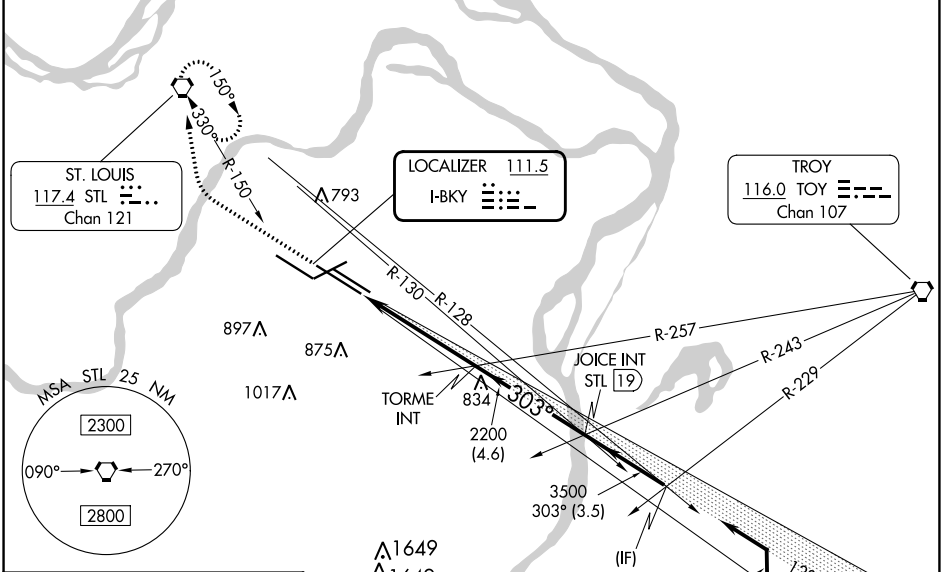
ST LOUIS LAMBERT INTL (STL)

For inop ALS, increase S-ILS 30L Cat E visibility to RVR 4000 and S-LOC 30L Cat C/D/E visibility to 1 3/8 SM. Simultaneous approach authorized with Rwy 30R requires use of vertical guidance; maintain last assigned altitude until established on glideslope. Simultaneous approach authorized with Rwy 29. \*RVR 1800 authorized with use of FD or AP or HUD to DA.



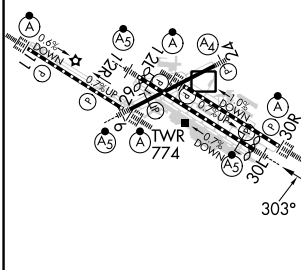
MISSED APPROACH: Climb to 2100 then climbing right turn to 3000 direct STL VORTAC and hold, continue climb-in-hold to 3000.

D-ATIS <b>125.025</b> <b>379.925</b>	ST. LOUIS APP CON <b>132.125 360.6</b>	ST. LOUIS TOWER <b>118.5 257.7</b>	GND CON <b>121.9 348.6</b> (Inbound) <b>121.65 377.175</b> (Outbound) <b>118.925 227.125</b> (Rwy 11/29)	CLNC DEL <b>119.5 363.1</b>	CPDLC
--	---	---------------------------------------	---	--------------------------------	-------



ELEV 618	D	TDZE 583
----------	---	----------

Rwy 6-24 7603 X 150  
Rwy 11-29 9000 X 150  
Rwy 12L-30R 9013 X 150  
Rwy 12R-30L 11020 X 150



HIRL all Rwsy  
TDZ/CL Rwsy 11, 12L, 12R, 29, and 30R  
FAF to MAP 4.9 NM

Knots	60	90	120	150	180
Min:Sec	4:54	3:16	2:27	1:58	1:38

2100	3000	STL	JOICE INT STL [19]	FONTI INT STL [22.4]	
↑	↷	⬠			
STL [9.7]	TORME INT 2200	3500	4500	GS 3.00° TCH 58	
4.9 NM	4.6 NM	3.5 NM			
CATEGORY	A	B	C	D	E
S-ILS 30L*	783/24 200 (200-1/2)				
S-LOC 30L	1100/24 517 (500-1/2)		1100/55 517 (500-1)		

NC-3, 03 OCT 2024 to 31 OCT 2024

NC-3, 03 OCT 2024 to 31 OCT 2024