

WAAS CH 78121 W12B	APP CRS 123°	Rwy ldg TDZE Apt Elev	10553 540 618
--	------------------------	-----------------------------	--

RNAV (GPS) Y RWY 12R

ST LOUIS LAMBERT INTL (STL)

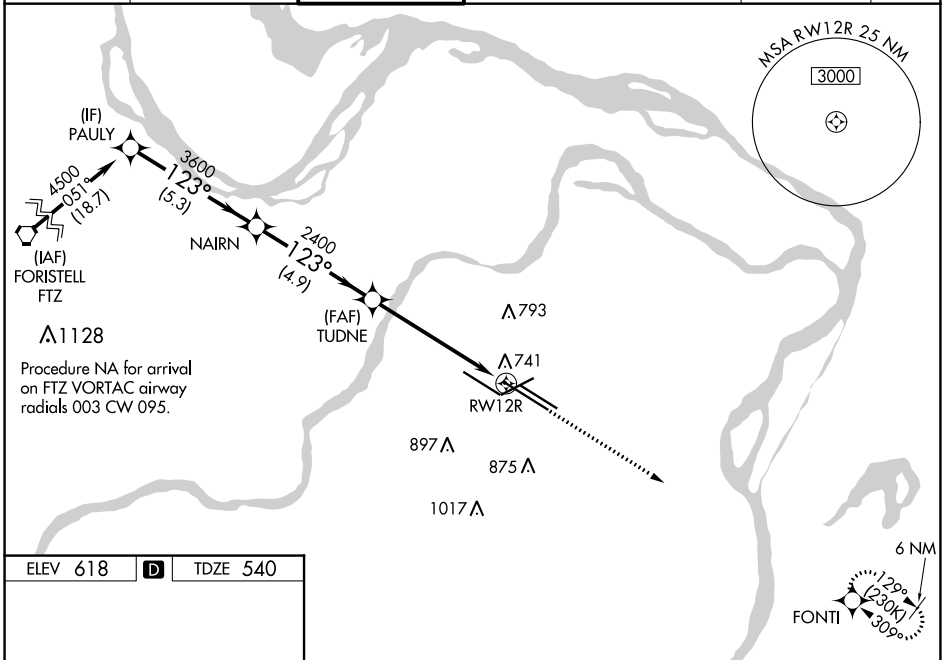
▽ For uncompensated Baro-VNAV systems, LNAV/VNAV NA below -16°C (4°F) or above 54°C (130°F). DME/DME RNP-0.3 NA. For inop ALS, increase LPV Cat E visibility to RVR 4000, LNAV Cats A/B visibility to RVR 5000, and LNAV Cat E visibility to 1½ SM. Inop table does not apply to LNAV/VNAV. Simultaneous approach authorized with Rwy 11. LNAV procedure NA during simultaneous operations. Use of FD or AP required during simultaneous operations.

MALSR



MISSED APPROACH:
Climb to 5000 direct FONTI and hold, continue climb-in-hold to 5000.

D-ATIS 125.025 379.925	ST. LOUIS APP CON 132.125 360.6	ST. LOUIS TOWER 118.5 257.7	GND CON 121.9 348.6 (Inbound) 121.65 377.175 (Outbound) 118.925 227.125 (Rwy 11/29)	CLNC DEL 119.5 363.1	CPDLC
--	---	---------------------------------------	---	--------------------------------	-------



NC-3, 03 OCT 2024 to 31 OCT 2024

NC-3, 03 OCT 2024 to 31 OCT 2024

ELEV 618	D	TDZE 540
----------	----------	----------

Rwy 6-24 7603 X 150
Rwy 11-29 9000 X 150
Rwy 12L-30R 9013 X 150
Rwy 12R-30L 11020 X 150

HIRL all Rwys
TDZ/CL Rwys 11, 12L, 12R, 29, and 30R

PAULY	NAI RN	TUDNE	FONTI		
4500	3600	2400	5000	*LNAV only	
*1.3 NM to RWY 12R			RWY 12R		
GP 3.00° TCH 54					
-5.3 NM		-4.9 NM		-4.4 NM	
-1.3 NM					
CATEGORY	A	B	C	D	E
LPV	DA	740/18		200 (200-½)	
LNAV/VNAV	DA	1103-2 563 (500-2)			
LNAV MDA	1000/40		460 (400-¾)		1000/50 460 (400-1)