

WAAS CH 73000 W30A	APP CRS 303°	Rwy Idg TDZE Apt Elev	9013 605 618
--	------------------------	-----------------------------	---

RNAV (GPS) Y RWY 30R

ST LOUIS LAMBERT INTL (STL)

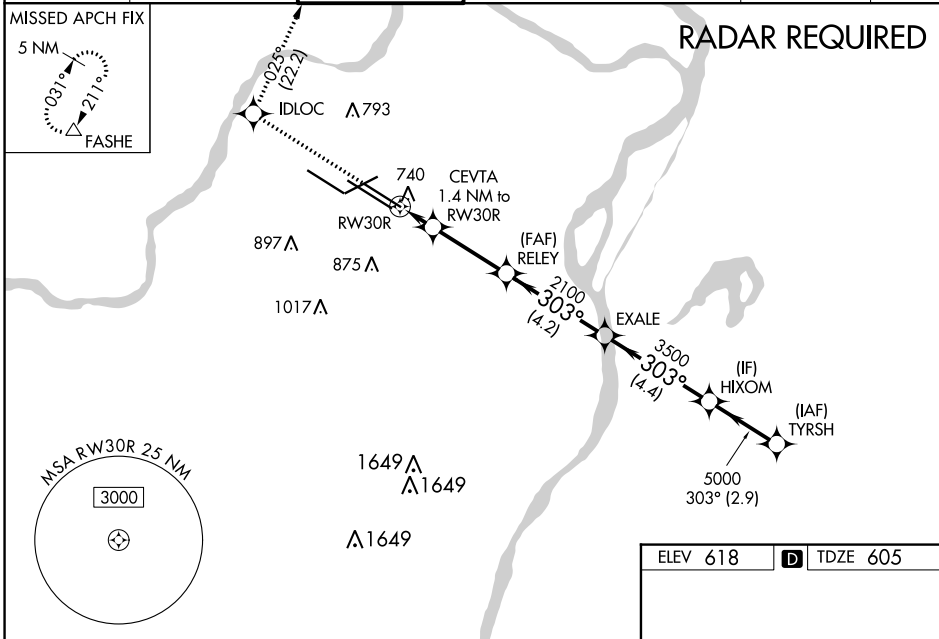
▽ For uncompensated Baro-VNAV systems, LNAV/VNAV NA below -15°C (5°F) or above 54°C (130°F). DME/DME RNP-0.3 NA. For inop ALS, increase LPV Cat E visibility to RVR 4000, LNAV/VNAV all Cats visibility to 4500, LNAV Cat D visibility to RVR 6000, and LNAV Cat E visibility to 1½ SM. Simultaneous approach authorized with Rwy 29. LNAV procedure NA during simultaneous operations. Use of FD or AP required during simultaneous operations.

ALSF-2



MISSED APPROACH:
Climb to 3000 direct IDLOC and on track 025° to FASHE and hold.

D-ATIS 125.025 379.925	ST. LOUIS APP CON 132.125 360.6	ST. LOUIS TOWER 120.05 284.6	GND CON 121.9 348.6 (Inbound) 121.65 377.175 (Outbound) 118.925 227.125 (Rwy 11/29)	CLNC DEL 119.5 363.1	CPDLC
--	---	--	---	--------------------------------	-------



3000	IDLOC	tr 025°	FASHE					
*LNAV only				CEVTA 1.4 NM to RW30R	RELEY	EXALE	HIXOM	TYRSH
RW30R				1100*	2100	3500	5000	5000
				1.4	3.1 NM	4.2 NM	4.4 NM	2.9 NM
CATEGORY	A	B	C	D	E			
LPV DA	805/18		200 (200-½)					
LNAV/VNAV DA	901/24		296 (300-½)					
LNAV MDA	1000/24	395 (400-½)	1000/35	395 (400-⅝)				

ELEV 618	D TDZE 605
----------	-------------------

Rwy 6-24 7603 X 150
Rwy 11-29 9000 X 150
Rwy 12L-30R 9013 X 150
Rwy 12R-30L 11020 X 150

NC-3, 03 OCT 2024 to 31 OCT 2024

NC-3, 03 OCT 2024 to 31 OCT 2024