

24193

AIRPORT DIAGRAM

JOHN WAYNE/ORANGE COUNTY (SNA)

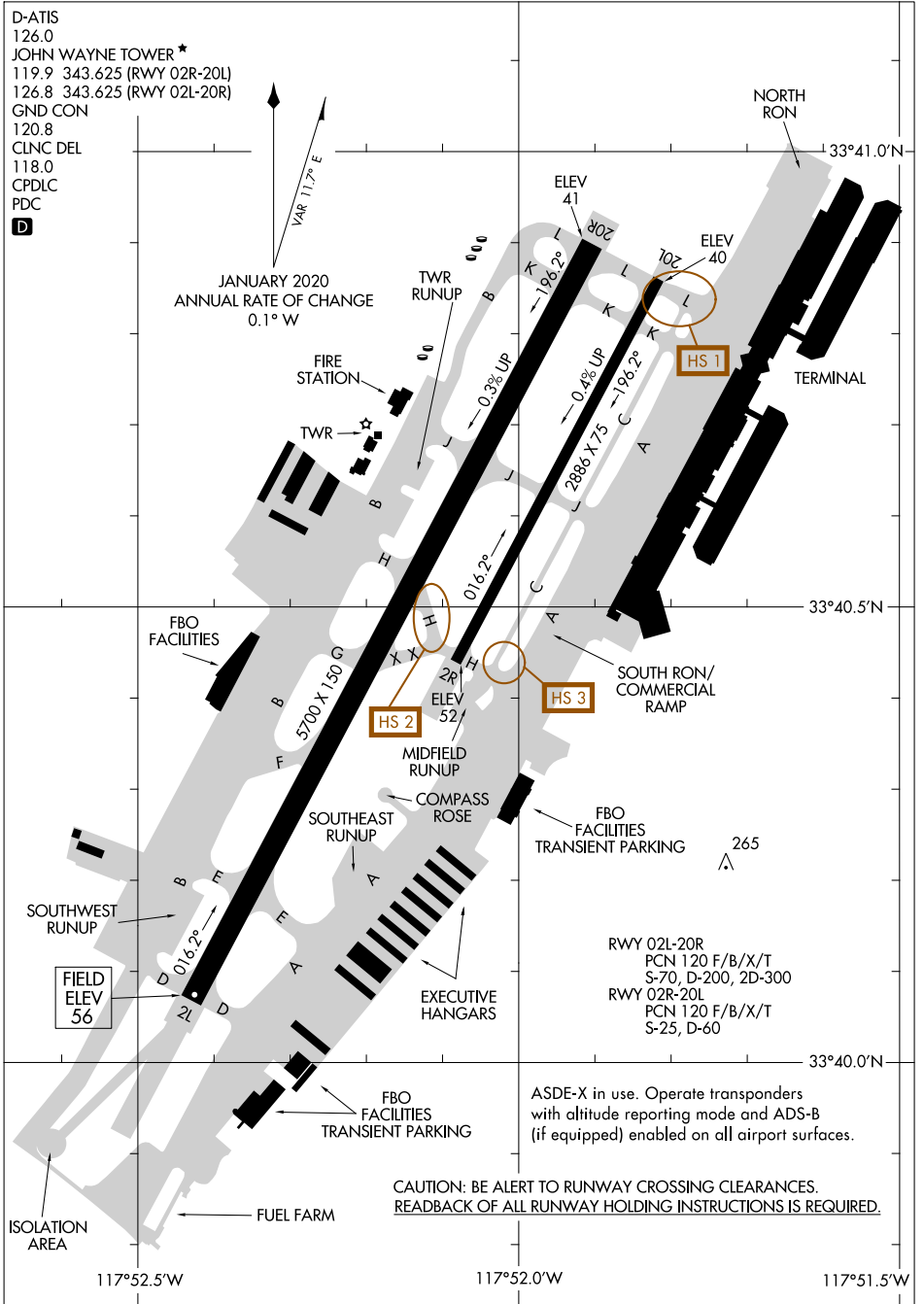
AL-377 (FAA)

SANTA ANA, CALIFORNIA

D-ATIS
126.0
JOHN WAYNE TOWER *
119.9 343.625 (RWY 02R-20L)
126.8 343.625 (RWY 02L-20R)
GND CON
120.8
CLNC DEL
118.0
CPDLC
PDC



VAR 11.7° E
JANUARY 2020
ANNUAL RATE OF CHANGE
0.1° W



SW-3, 03 OCT 2024 to 31 OCT 2024

SW-3, 03 OCT 2024 to 31 OCT 2024

FIELD ELEV 56

RWY 02L-20R
PCN 120 F/B/X/T
S-70, D-200, 2D-300
RWY 02R-20L
PCN 120 F/B/X/T
S-25, D-60

ASDE-X in use. Operate transponders with altitude reporting mode and ADS-B (if equipped) enabled on all airport surfaces.

CAUTION: BE ALERT TO RUNWAY CROSSING CLEARANCES. READBACK OF ALL RUNWAY HOLDING INSTRUCTIONS IS REQUIRED.

AIRPORT DIAGRAM

24193

JOHN WAYNE/ORANGE COUNTY (SNA)

SANTA ANA, CALIFORNIA