

APP CRS	Rwy Idg	<b>5700</b>
<b>016°</b>	TDZE	<b>56</b>
	Apt Elev	<b>56</b>

# RNAV (RNP) Z RWY 2L

JOHN WAYNE/ORANGE COUNTY (SNA)

For uncompensated Baro-VNAV systems, procedure NA below 5°C (41°F) or above 54°C (130°F). GPS required.

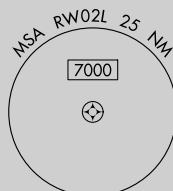
MISSED APPROACH: Climb to 800 then climbing left turn to 2600 direct SLI VORTAC and hold.

D-ATIS	SOCAL APP CON	JOHN WAYNE TOWER ★	GND CON	CLNC DEL	CPDLC	UNICOM
<b>126.0</b>	<b>121.3 263.1</b>	<b>126.8 (CTAF) 0 343.625</b>	<b>120.8</b>	<b>118.0</b>		<b>122.95</b>

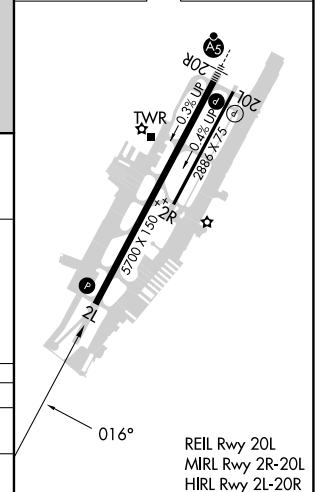
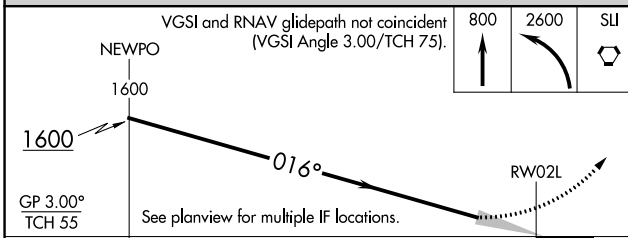


SW-3, 03 OCT 2024 to 31 OCT 2024

SW-3, 03 OCT 2024 to 31 OCT 2024



ELEV	56	D	TDZE	56
------	----	---	------	----



CATEGORY	A	B	C	D
RNP 0.30 DA		403-1 1/8	347 (400-1 1/8)	

**AUTHORIZATION REQUIRED**