

VORTAC GVO	APP CRS	Rwy Idg
<b>113.8</b>	<b>279°</b>	<b>6052</b>
Chan 85		TDZE <b>10</b>
		Apt Elev <b>10</b>

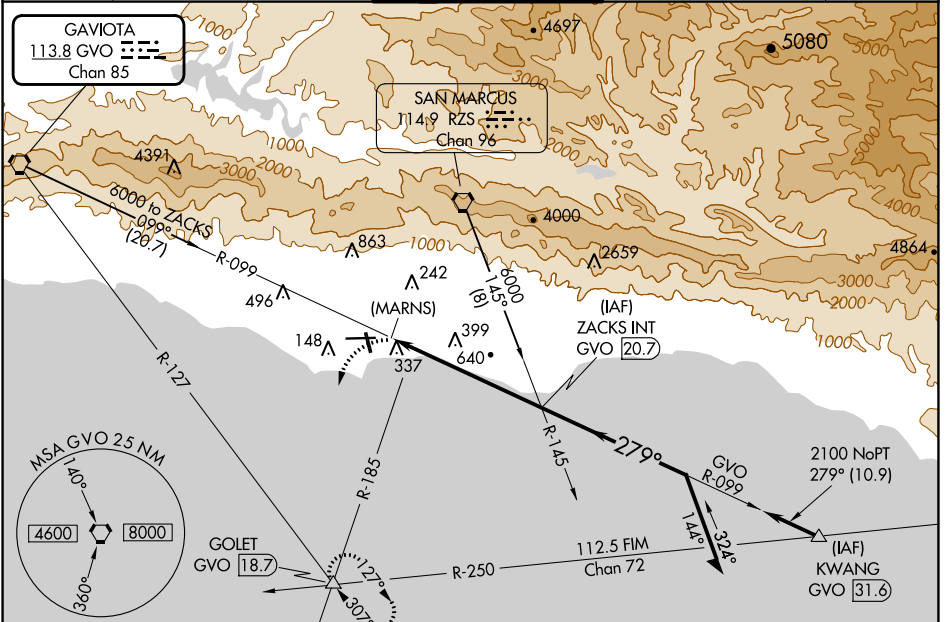
# VOR or GPS RWY 25

SANTA BARBARA MUNI (SBA)

**⚠** Helicopter visibility reduction below 3/4 SM NA. When local altimeter not received, use Oxnard altimeter setting and increase all MDA 100 feet and all Cats B and C visibility 1/4 mile. Circling Rwy 15R NA at night. Circling NA for Cats C and D north of Rwy 7-25.

**⚠** MISSED APPROACH: Climbing left turn to 4000 via heading 205° and GVO R-127 to GOLET Int and hold.

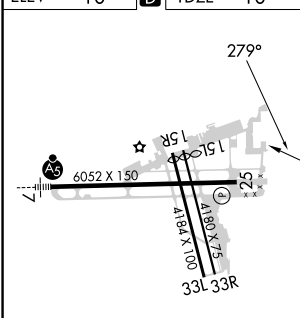
ATIS <b>132.65</b>	SANTA BARBARA APP CON* <b>120.55 319.15</b> (151°-329°) <b>125.4 291.1</b> (330°-150°)	SANTA BARBARA TOWER* <b>119.7</b> (CTAF) <b>254.35</b>	GND CON <b>121.7</b>	CLNC DEL <b>132.9</b>	UNICOM <b>122.95</b>
-----------------------	--	---	-------------------------	--------------------------	-------------------------



SW-3, 03 OCT 2024 to 31 OCT 2024

SW-3, 03 OCT 2024 to 31 OCT 2024

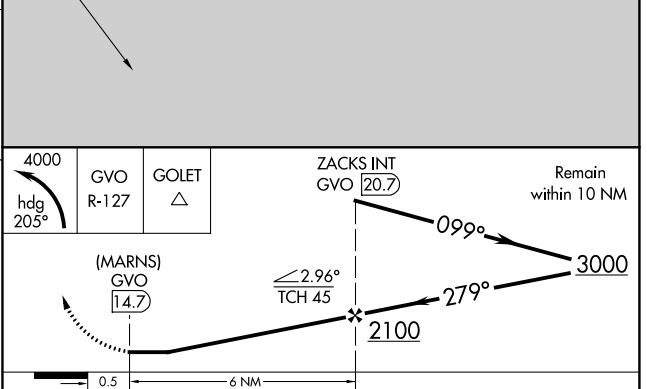
ELEV 10	<b>D</b>	TDZE 10
---------	----------	---------



HIRL Rwy 7-25  
MIRL Rwy 15R-33L **Ⓢ**  
REIL Rwy 15R **Ⓢ**  
REIL Rwy 25

FAF to MAP 6 NM

Knots	60	90	120	150	180
Min:Sec	6:00	4:00	3:00	2:24	2:00



CATEGORY	A	B	C	D
S-25	920-1 1/4 910 (1000-1 1/4)		920-2 3/4 910 (1000-2 3/4)	920-3 910 (1000-3)
CIRCLING	920-1 1/4 910 (1000-1 1/4)		920-2 3/4 910 (1000-2 3/4)	960-3 950 (1000-3)