

VOR/DME SHR 113.55 Chan 82(Y)	APP CRS 131°	Rwy Idg TDZE Apt Elev 8301 4014 4021
---	------------------------	--

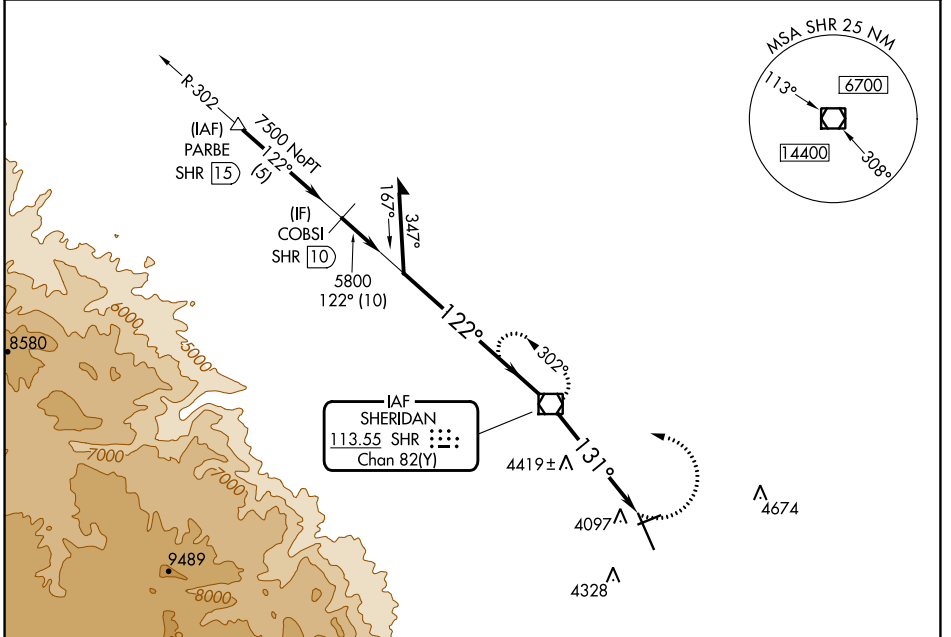
VOR RWY 15

SHERIDAN COUNTY (SHR)

When local altimeter setting not received, procedure NA. Night landing: Rwy 24 NA.

MISSED APPROACH: Climbing left turn to 7000 direct SHR VOR/DME and hold, continue climb-in-hold to 7000.

ASOS 135,175	SALT LAKE CENTER 127.75 351.9	UNICOM 123.0 (CTAF) 1
------------------------	---	--



NW-1, 03 OCT 2024 to 31 OCT 2024

NW-1, 03 OCT 2024 to 31 OCT 2024



VGSI and descent angles not coincident (VGSI Angle 3.00/TCH 50).

Remain within 10 NM

SHR VOR/DME

SHR 3.1

SHR 5

7000

5800

122°

302°

3.26° TCH 50

131°

3.1 NM

1.9 NM

ELEV 4021	D	TDZE 4014
-----------	---	-----------

HIRL Rwy 15-33 **1**

MIRL Rwy 6-24 **1**

REIL Rws 6, 15, and 24 **1**

FAF to MAP 5 NM

Knots	60	90	120	150	180
Min:Sec	5:00	3:20	2:30	2:00	1:40

CATEGORY	A	B	C	D
S-15	4680-1	666 (700-1)	4680-1 $\frac{7}{8}$	666 (700-1 $\frac{7}{8}$)
C CIRCLING	4680-1	659 (700-1)	4860-2 $\frac{1}{2}$ 839 (900-2 $\frac{1}{2}$)	5220-3 1199 (1200-3)