

# HI-ILS or LOC Z RWY 33

LOC I-BAD <b>109.9</b>	APCH CRS <b>329°</b>	Rwy ldg <b>11,758</b> THRE <b>161</b> Arpt Elev <b>165</b>
---------------------------	-------------------------	---

[USAF]

BARKSDALE AFB (KBAD)

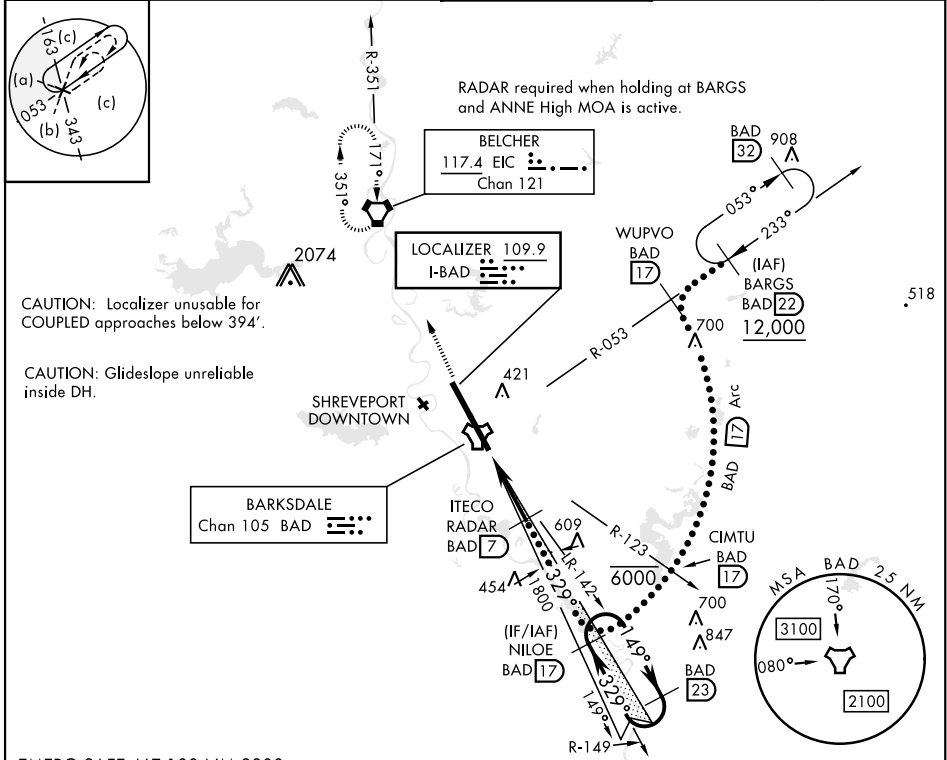
RADAR or DME required

ALSF-1

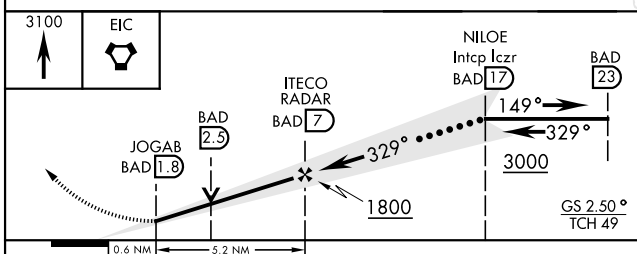
MISSED APPROACH: Climb to 3100 direct to EIC VORTAC and hold.

- \*When ALS inop, increase CAT CDE RVR to 40 and vis to 3/4 mile.
- \*\*When ALS inop, increase CAT CDE RVR to 60 and vis to 1 1/8 miles.
- \*\*\* Circling not authorized W of Rwy.

ATIS <b>307.025</b>	SHREVEPORT APP CON 320°-152° <b>123.75 360.725</b> 153°-319° <b>119.9 335.55</b>	TOWER* <b>128.25 278.3</b>	GND CON <b>121.8 253.5</b>	ASR
------------------------	--	-------------------------------	-------------------------------	-----



EMERG SAFE ALT 100 NM 3300



ELEV	165	THRE	161
247	288	289	255
339	247	176	171
TWR 324	195	161	329°
HIRL Rwy 15-33			
FAF to MAP 5.3 NM			
Knots	120	140	160
Min:Sec	2:36	2:14	1:57
	180	200	1:44
	1:34		

CATEGORY	C	D	E
S-ILS 33*	361/24	200	(200-1/2)
S-LOC 33**	560/35	399	(400-%)
CIRCLING ***	NOT AUTHORIZED	760-2 595 (600-2)	780-2 1/4 615 (700-2 1/4)

# HI-ILS or LOC Z RWY 33

SC-4, 03 OCT 2024 to 31 OCT 2024

SC-4, 03 OCT 2024 to 31 OCT 2024