

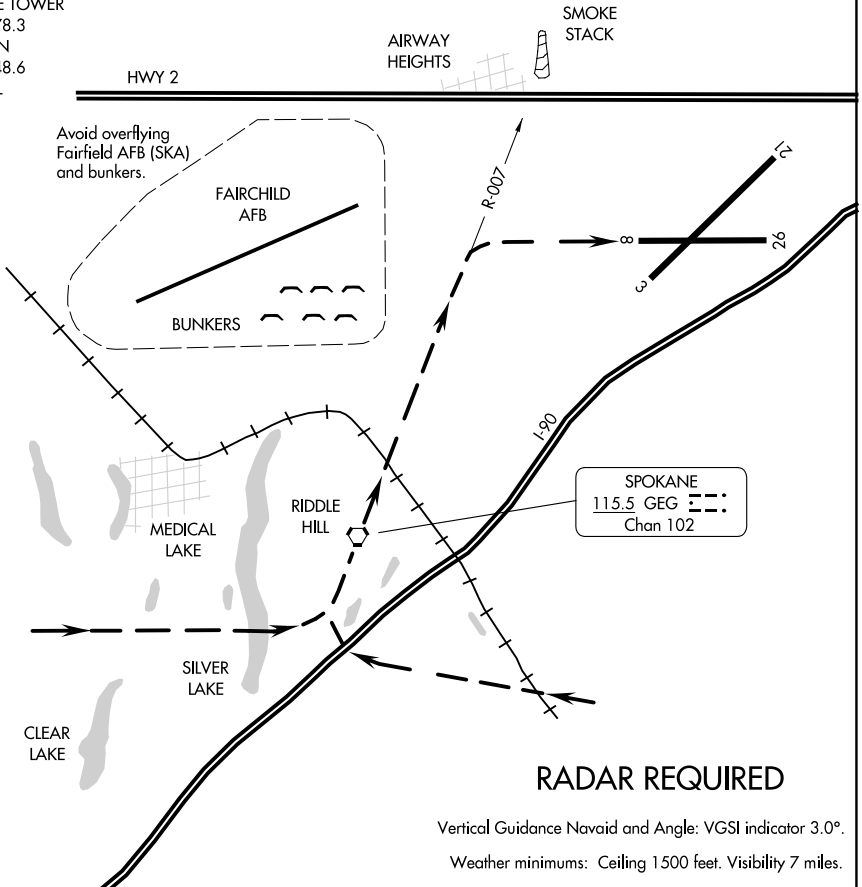
23334

# RIDDLE HILL VISUAL RWY 8

AL-403 (FAA)

SPOKANE INTL (GEG)  
SPOKANE, WASHINGTON

ATIS  
 124.325 254.375  
 SPOKANE APP CON  
 123.75 282.25 (205°-025°)  
 133.35 263.0 (026°-204°)  
 SPOKANE TOWER  
 118.3 278.3  
 GND CON  
 121.9 348.6  
 CLNC DEL  
 127.55



NW-1, 03 OCT 2024 to 31 OCT 2024

NW-1, 03 OCT 2024 to 31 OCT 2024

1 NM	2	3	4	5	6	7	8	9
------	---	---	---	---	---	---	---	---

## RIDDLE HILL VISUAL APPROACH RWY 8

PROCEDURE NOT AUTHORIZED AT NIGHT.

Arrivals expect to be vectored south of the VOR to execute approach.

# RIDDLE HILL VISUAL RWY 8

47°37'N-117°32'W

SPOKANE, WASHINGTON  
SPOKANE INTL (GEG)

Amdt 1A 15JUN23