

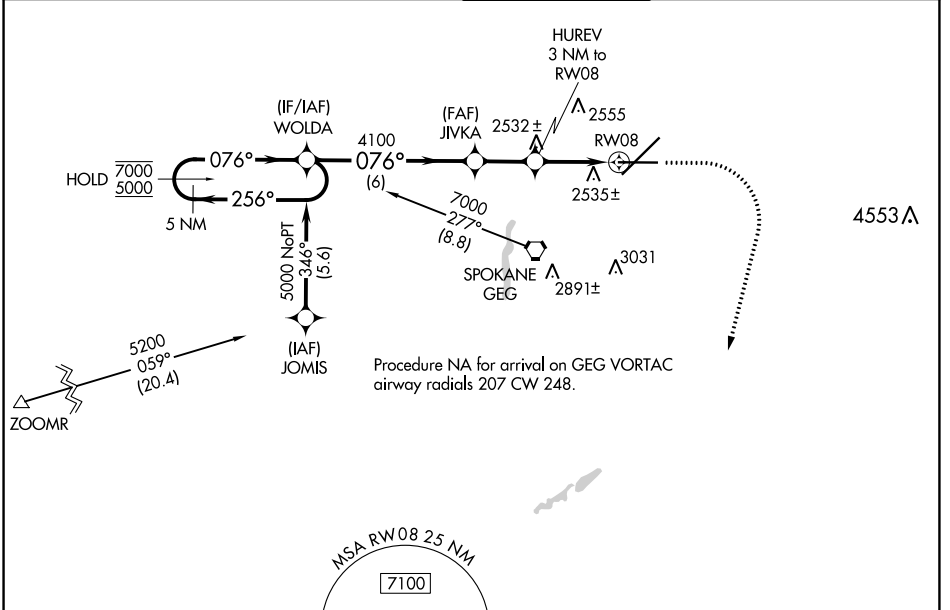
WAAS CH 48801 W08A	APP CRS 076°	Rwy Idg TDZE Apt Elev	8199 2376 2385
--	------------------------	-----------------------------	---

RNAV (GPS) Y RWY 8

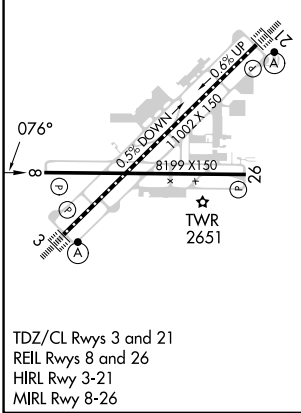
SPOKANE INTL (GEG)

RNP APCH.	MISSED APPROACH: Climb to 2900, then climbing right turn to 6000 direct ATOXE and hold.			
▼ For uncompensated Baro-VNAV systems, LNAV/VNAV NA below -18°C or above 52°C.				

ATIS 124.325 254.375	SPOKANE APP CON 123.75 282.25 (205°-025°) 133.35 263.0 (026°-204°)	SPOKANE TOWER 118.3 278.3	GND CON 121.9 348.6	CLNC DEL 127.55
--------------------------------	--	-------------------------------------	-------------------------------	---------------------------



ELEV 2385	D	TDZE 2376
-----------	----------	-----------



5 NM Holding Pattern		WOLDA		JIVKA		HUREV 3 NM to RW08		2900	6000	ATOXE
7000 ← 256°		→ 076°		→ 076°		→ 076°		↑	↷	△
5000		4100		4100		3400		1.2 NM to RW08		
GP 3.00°		TCH 60		6 NM		2.1 NM		1.8 NM		1.2
CATEGORY	A	B	C	D						
LPV DA	2576-¾		200 (200-¾)							
LNAV/VNAV DA	2834-1½		458 (500-1½)							
LNAV MDA	2800-1		424 (500-1)		2800-1¼		424 (500-1¼)			

NW-1, 03 OCT 2024 to 31 OCT 2024

NW-1, 03 OCT 2024 to 31 OCT 2024