

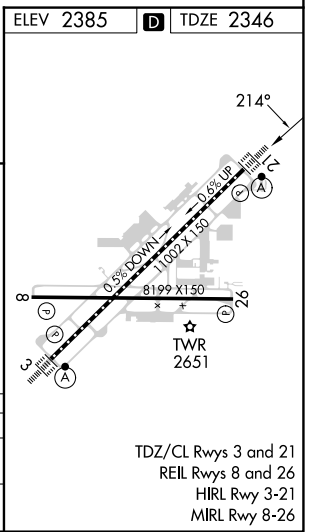
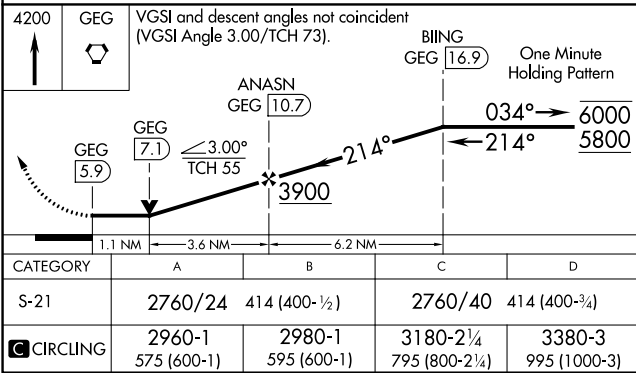
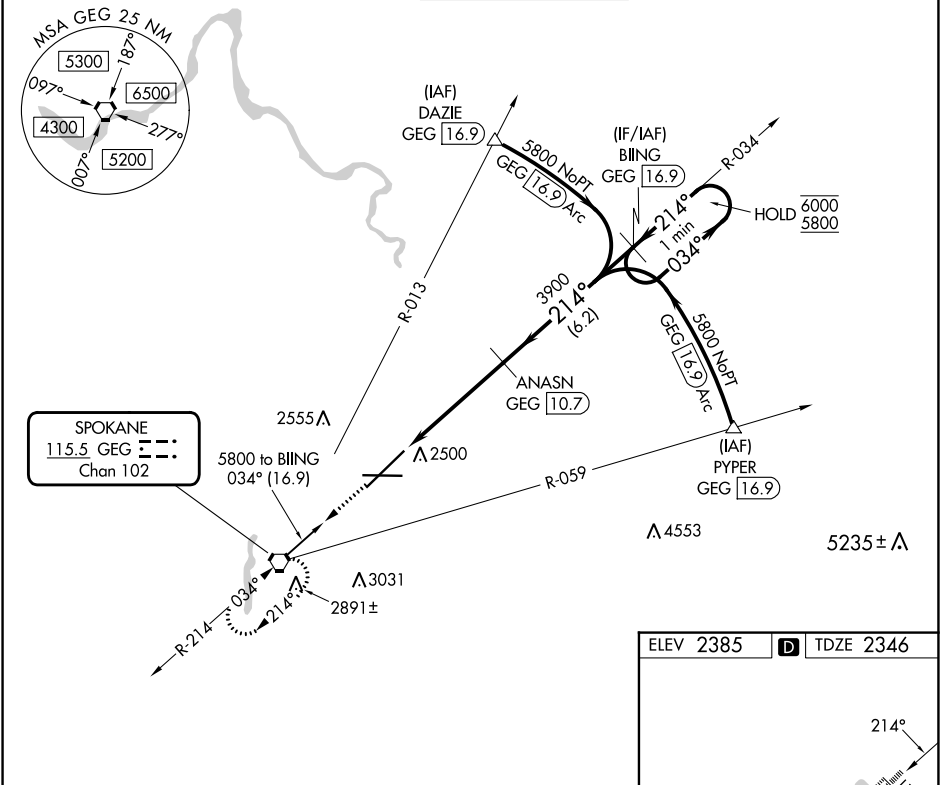
VORTAC GEG 115.5 Chan 102	APP CRS 214°	Rwy Idg TDZE Apt Elev	11002 2346 2385
--	------------------------	-----------------------------	--

VOR RWY 21

SPOKANE INTL (GEG)

DME required.		ALSF-2	MISSED APPROACH: Climb to 4200 direct GEG VORTAC and hold, continue climb-in-hold to 4200.	
---------------	--	--------	--	--

ATIS 124.325 254.375	SPOKANE APP CON 123.75 282.25 (205°-025°) 133.35 263.0 (026°-204°)	SPOKANE TOWER 118.3 278.3	GND CON 121.9 348.6	CLNC DEL 127.55
--------------------------------	--	-------------------------------------	-------------------------------	---------------------------



NW-1, 03 OCT 2024 to 31 OCT 2024

NW-1, 03 OCT 2024 to 31 OCT 2024

TDZ/CL Rwys 3 and 21
REIL Rwys 8 and 26
HIRL Rwy 3-21
MIRL Rwy 8-26