

SUMTER, SOUTH CAROLINA

# TACAN Y RWY 22R

TACAN SSC Chan <b>38</b>	APCH CRS <b>222°</b>	Rwy Ldg TDZE <b>240</b> Arprt Elev <b>241</b>	22R <b>10,014</b>	22L <b>8014</b> <b>235</b> <b>241</b>
-----------------------------	-------------------------	---	----------------------	--

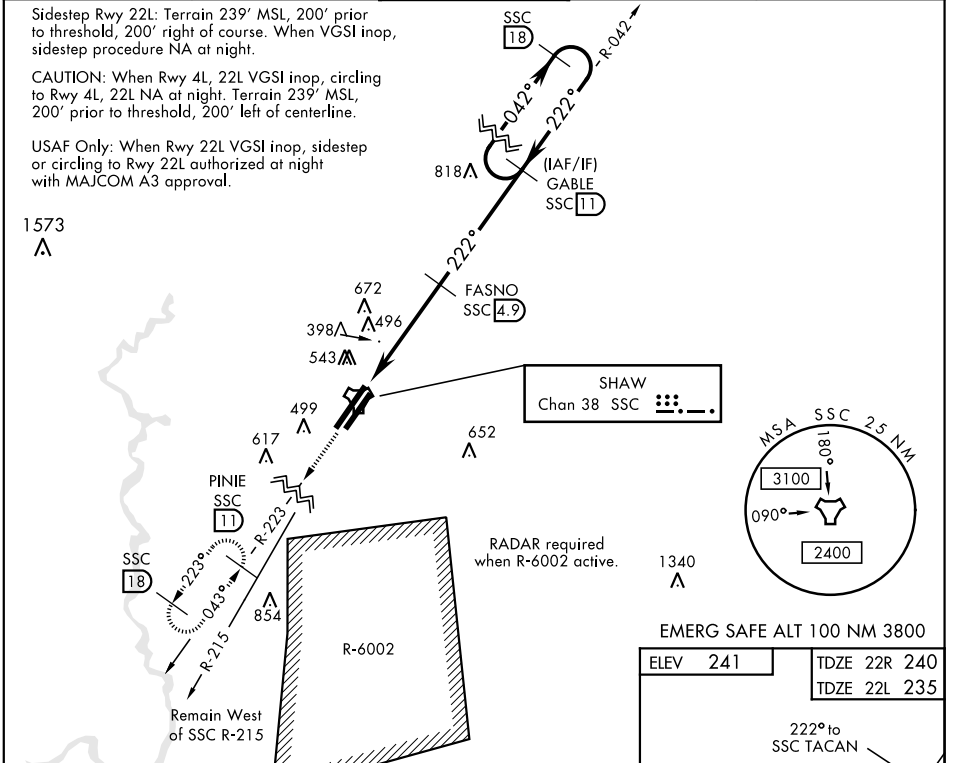
AL-409 [USAF]

SHAW AFB (KSSC)

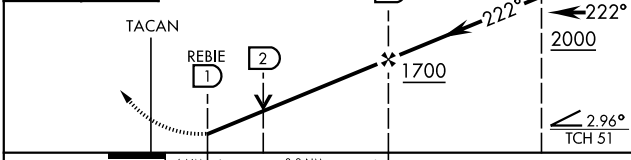
▼ \* When ALS inop, increase CAT AB RVR to 55, vis to 1 mile; CAT CDE vis to 1½ miles.  
 \*\* When ALS inop, increase CAT AB RVR to 55, vis to 1 mile; CAT CDE vis to 1¾ miles.

ALSF-1 MISSED APPROACH: Climbing to 2000, intercept SSC TACAN R-223 to PINIE and hold.

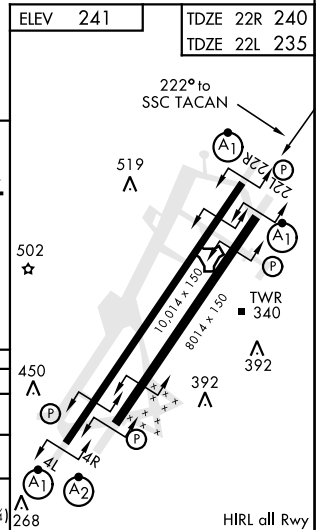
ATIS ★ <b>132.125 270.1</b>	SHAW APP CON <b>125.4 318.1</b>	SHAW TOWER ★ <b>126.65 254.25</b>	GND CON <b>126.1 275.8</b>	CLNC DEL <b>126.1 275.8</b>
--------------------------------	------------------------------------	--------------------------------------	-------------------------------	--------------------------------



2000 SSC R-223	PINIE SSC 11	FASNO 4.9	GABLE R-042 11
----------------	--------------	-----------	----------------



CATEGORY	A	B	C	D	E
S-22R*	760/24	520 (600-½)	760/55	520 (600-1)	
SIDESTEP ** 22L	760/50	505 (600-1)	760/55	505 (600-1)	
CIRCLING	820-1 579 (600-1)	880-1 639 (700-1)	1000-2¼ 759 (800-2¼)	1000-2½ 759 (800-2½)	1000-2¾ 759 (800-2¾)



SUMTER, SOUTH CAROLINA  
Amdt 1 07NOV19

33° 58' N-80° 28' W

SHAW AFB (KSSC)

# TACAN Y RWY 22R

SE-2, 03 OCT 2024 to 31 OCT 2024

SE-2, 03 OCT 2024 to 31 OCT 2024