

RNAV (GPS) RWY 15

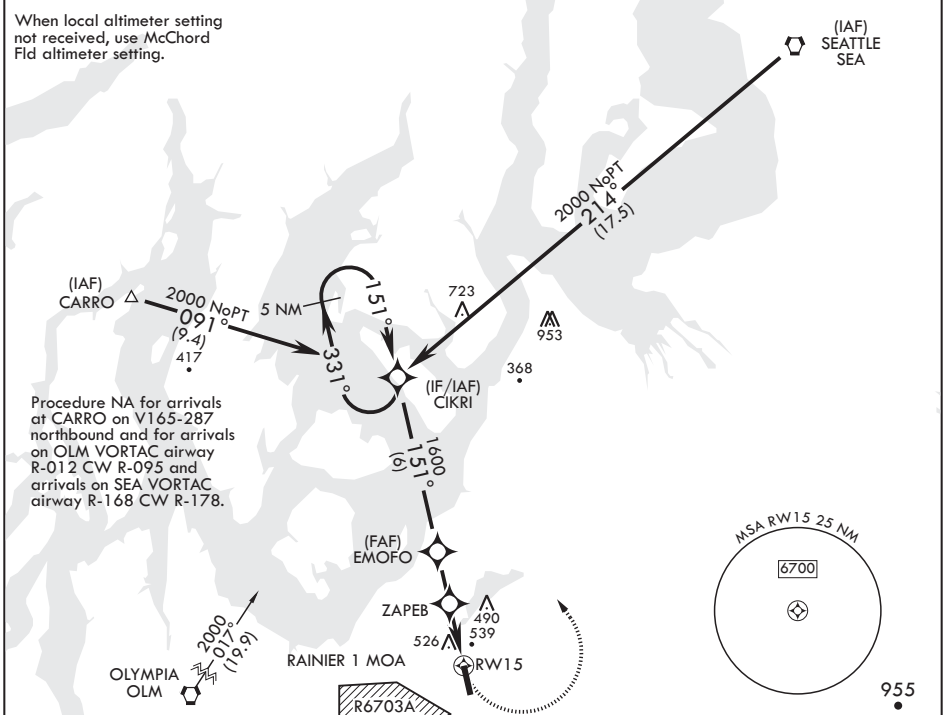
APCH CRS	Rwy Idg	6124
151°	TDZE	300
	Arprt Elev	301

AL-413 (USA)

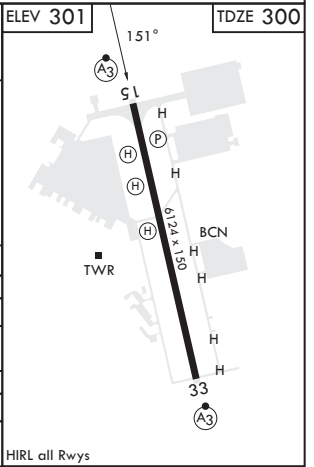
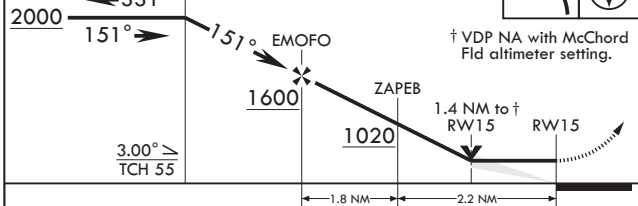
GRAY AAF (JOINT BASE LEWIS MCCHORD) (KGRF)

RNP APCH	SSALR	MISSED APPROACH: Climbing left turn to 2000 direct CIKRI and hold.
▼ *Circling not authorized W of Rwy 15-33.		

ATIS	SEATTLE APP CON/DEP CON	TOWER *	GND CON	CLNC DEL	PAR
124.65 306.2	120.1 290.9	119.325 (CTAF) 256.8	121.9 290.2	121.9 290.2	



2000	← 331°	CIKRI	VGSI and descent angles not coincident.	2000	↙	CIKRI	ELEV 301	TDZE 300
------	--------	-------	---	------	---	-------	----------	----------



CATEGORY	A	B	C	D
LNAV MDA	800/24	500 (500-½)	800/50	500 (500-1)
CIRCLING*	840-1	539 (600-1)	840-1½ 539 (600-1½)	920-2 619 (700-2)
MC CHORD FLD ALTIMETER SETTING MINIMUMS				
LNAV MDA	820/24		520 (600-½)	
CIRCLING*	860-1	559 (600-1)	860-1½ 559 (600-1½)	940-2 639 (700-2)

HIRL all Rwys

RNAV (GPS) RWY 15

NW-1, 03 OCT 2024 to 31 OCT 2024

NW-1, 03 OCT 2024 to 31 OCT 2024