

TACOMA, WASHINGTON

ILS or LOC RWY 34

LOC I-TCM 108.5	APCH CRS 345°	Rwy Idg 10,108
		TDZE 322
		Arpt Elev 322

[USAF]

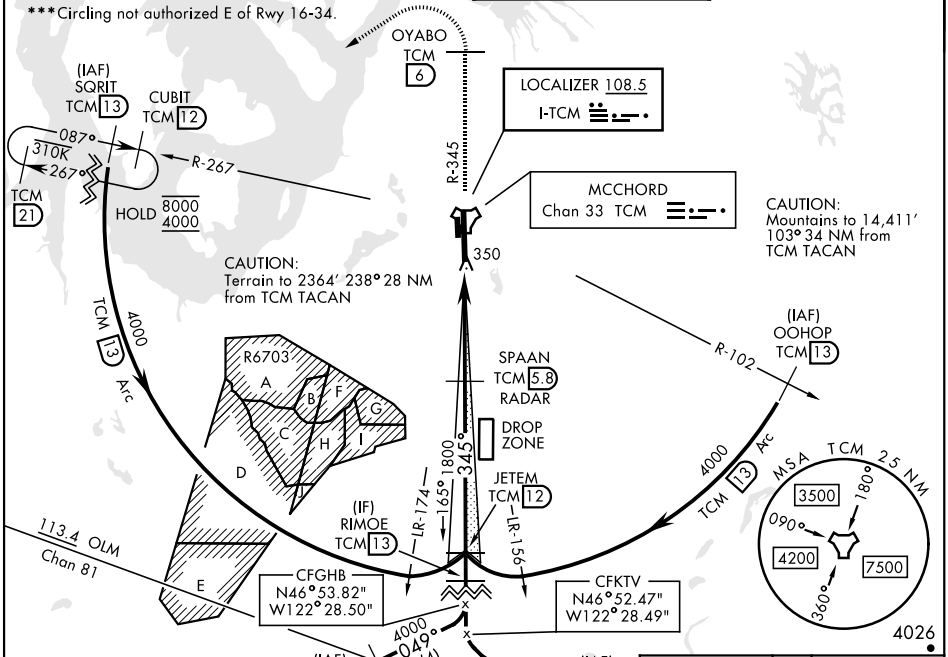
MCCHORD FLD (KTCM)

RADAR or DME required.

ALSF-2

MISSED APPROACH: Climb to 4000 on TCM TACAN R-345 to OYABO, then turn left via 215° course to intercept TCM R-267 to CUBIT and hold, continue climb-hold to 4000. Cross OYABO at or above 3000.

ATIS 135.825 270.1	SEATTLE APP CON 126.5 377.15	TOWER 124.8 259.3	GND CON 118.175 279.65
------------------------------	--	-----------------------------	----------------------------------

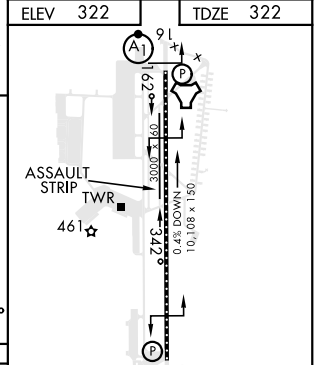
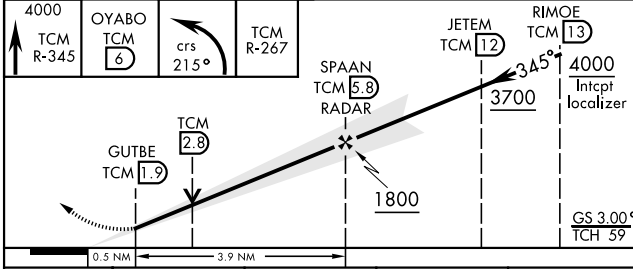


NW-1, 03 OCT 2024 to 31 OCT 2024

NW-1, 03 OCT 2024 to 31 OCT 2024

ELEV 322	TDZE 322
----------	----------

EMERG SAFE ALT 100 NM 16,600



CATEGORY	A	B	C	D
S-ILS 34*	522/18 200		(200-1/2)	
S-LOC 34**	860/40	538 (600-3/4)	860/55	538 (600-1)
CIRCLING ***	940-1	618 (700-1)	940-1 3/4 618 (700-1 3/4)	940-2 618 (700-2)

HIRL Rwy 16-34 TDZL/CL Rwy 34	FAF to MAP 3.9 NM					
	Knots	60	90	120	150	180
	Min:Sec	3:54	2:36	1:57	1:34	1:18

TACOMA, WASHINGTON
Amdt 5 30NOV23

47°08'N-122°29'W

MCCHORD FLD (KTCM)

ILS or LOC RWY 34