

# HI-ILS or LOC Z RWY 13

LOC I-AFB <b>109.3</b>	APCH CRS <b>128°</b>	Rwy Idg <b>13,645</b> TDZE <b>2615</b> Arpt Elev <b>2704</b>
---------------------------	-------------------------	--

[USAF]

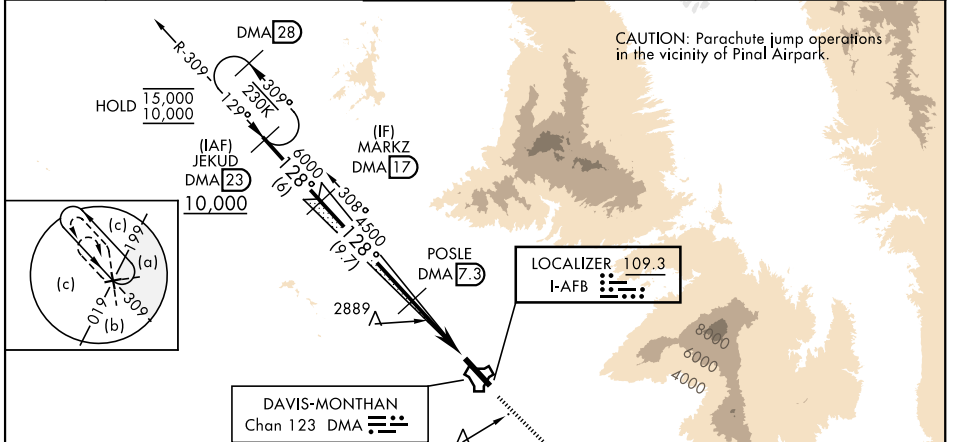
DAVIS-MONTHAN AFB (KDMA)

DME or RADAR required.

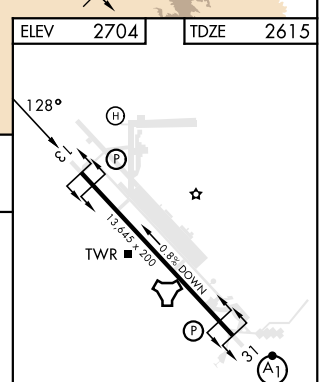
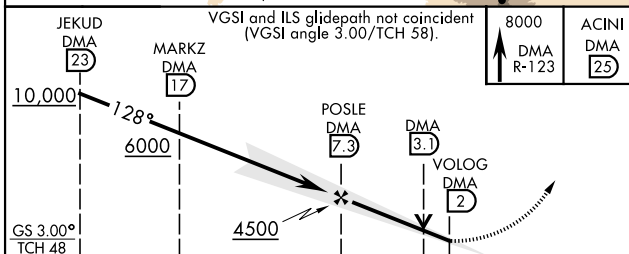
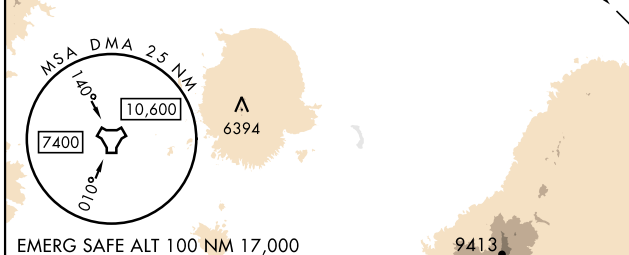
**\* Circling not authorized SW of Rwy 13-31.**

MISSED APPROACH: Climbing to 8000 intercept DMA TACAN R-123 to ACINI. Expect RADAR vectors.

ATIS★ <b>270.1</b>	TUCSON APP CON 066°-274° <b>119.4 318.1</b> 275°-065° <b>125.1 269.55</b>	TOWER <b>118.85 253.5</b>	GND CON <b>121.8 275.8</b>	CLNC DEL <b>121.8 275.8</b>
-----------------------	---	------------------------------	-------------------------------	--------------------------------



EFFECTIVE BY NOTAM



CATEGORY	C	D	E
S-ILS 13	2815/40	200 (200-¾)	
S-LOC 13	3160-1½	545 (500-1½)	
CIRCLING*	3280-1⅝ 576 (600-1½)	3420-2¼ 716 (800-2¼)	3460-2¾ 756 (800-2¾)

REIL Rwy 13					
HIRL Rwy 13-31					
FAF to MAP 5.3 NM					
Knots	120	140	160	180	200
Min:Sec	2:39	2:16	1:59	1:46	1:35

# HI-ILS or LOC Z RWY 13

SW-4, 03 OCT 2024 to 31 OCT 2024

SW-4, 03 OCT 2024 to 31 OCT 2024